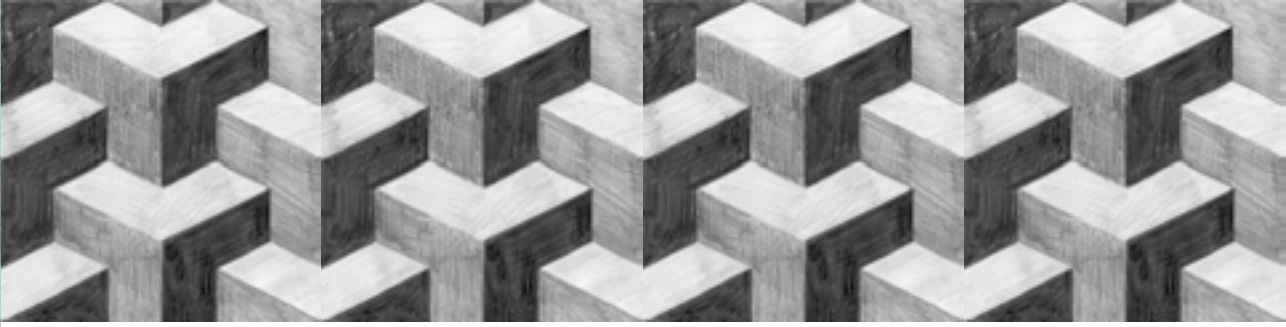
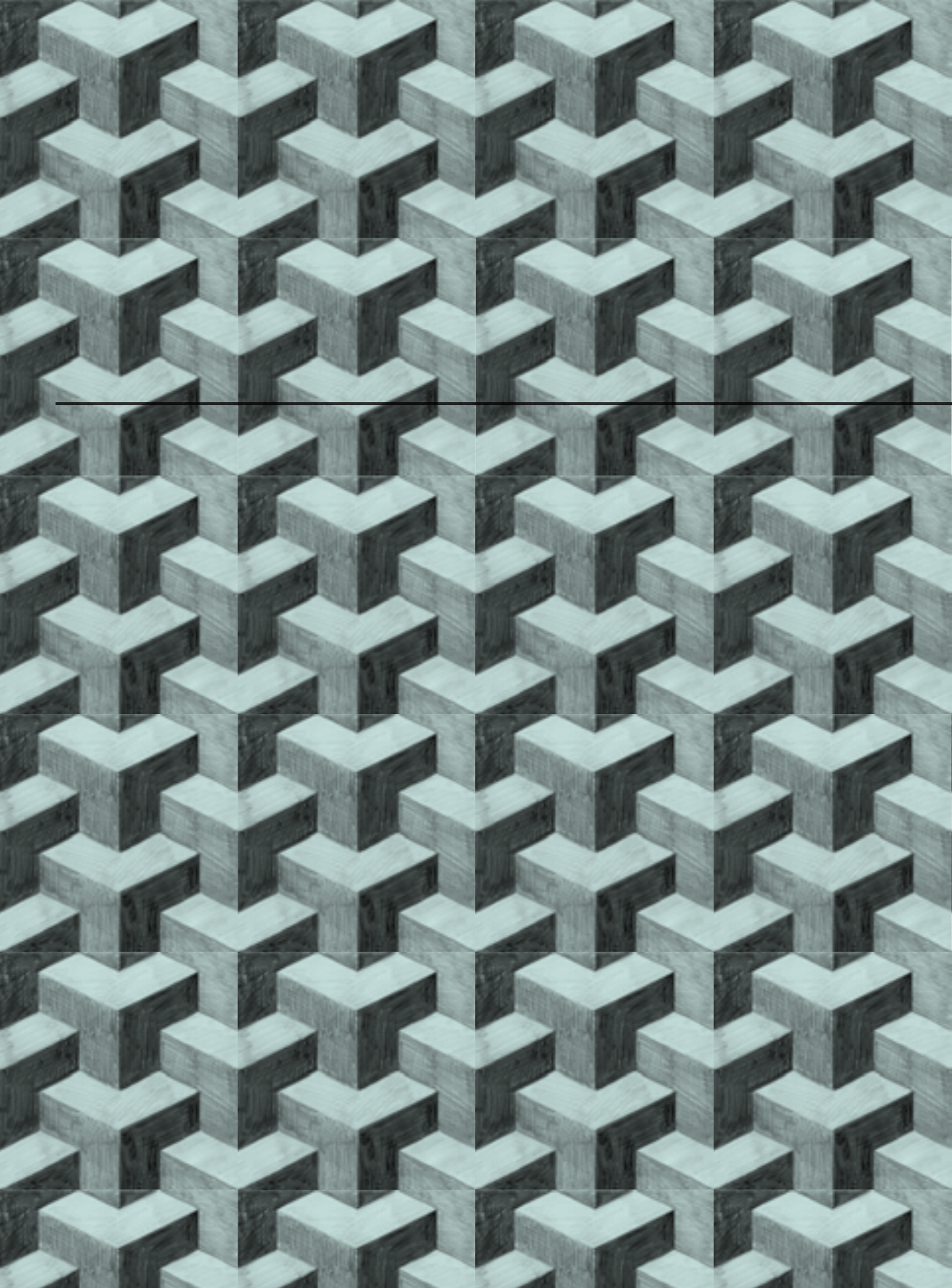




PUERTO
RICO

esplorare per riscoprire
explore to rediscover



#02

quaderno di progetto
project notebook



Continua la ricerca con nuove scoperte per un nuovo immaginario
The research continues with new discoveries for a new set of images

UNA NUOVA
COLLEZIONE
A NEW
COLLECTION



Il primo viaggio tra i decori cubani ha portato alla creazione di una vera e propria "collezione di ricerca", che è entrata a far parte del già ricco archivio MIPA. Le soddisfazioni ottenute ci hanno stimolati nel proseguire l'inesauribile ricerca ispiratrice all'interno del mondo della decorazione.

The first journey among Cuban decorations led to the creation of a new "research collection" which became part of the already very comprehensive MIPA archive. The satisfaction obtained pushed us to continuing in this relentless search for inspiration within the decoration world.

Anche in questo caso siamo rimasti nel Centro America rivolgendo l'attenzione a **Puerto Rico**, un altro paese che nei secoli ha subito forti contaminazioni dagli stili artistici ed architettonici del vecchio mondo, riadattandoli agli stili coloniali.

*Once again we sought inspiration in Central America. This time we turned our focus to **Puerto Rico**, another country that over the years has been crossed and influenced by countless architectural and art styles from the old world, which it re-visited according to colonial style.*

Un tuffo nel colore e nei decori di una terra tutta da scoprire.

A plunge into the colours and decorations of a country worth discovering.

La collezione **Puerto Rico** è stata anche il punto di partenza per lo studio e lo sviluppo di nuovi colori dal sapore tutto caraibico.

*The **Puerto Rico** collection was also the springboard to research and develop a new, distinctly Caribbean colour palette.*

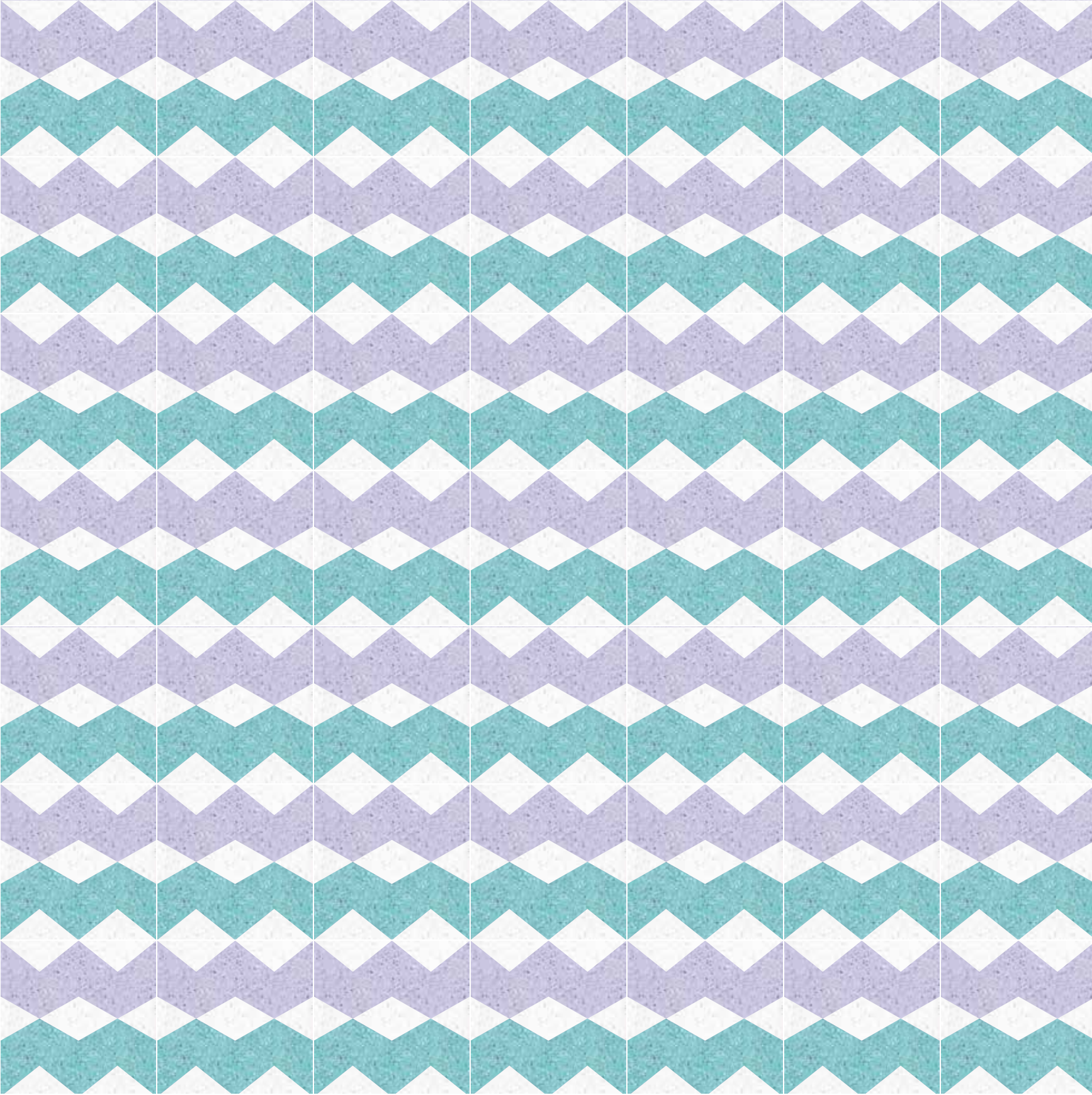
MIPA prosegue così la sua voglia di ricerca, di scoperta e di rinnovamento aggiungendo un nuovo tassello alle sue collezioni di graniglia.

Thus MIPA continues on its quest to research, discover and renew itself by adding a new element to its "Graniglia" collections.

PUERTO RICO
collezione decori ricerca
research decorations' collection

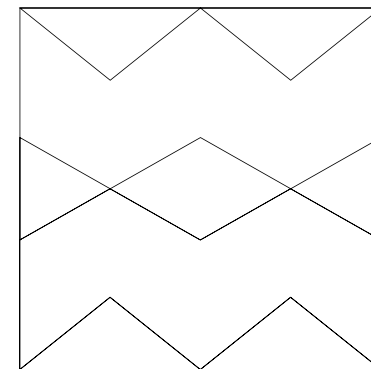
La collezione Puerto Rico e le nuove suggestioni per ispirare il vostro immaginario.
The Puerto Rico collection and the new suggestions to inspire your imagination

DECORI PATTERNS



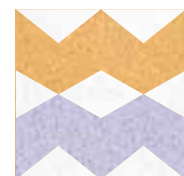
PUERTO RICO
collezione decori ricerca
research decorations' collection

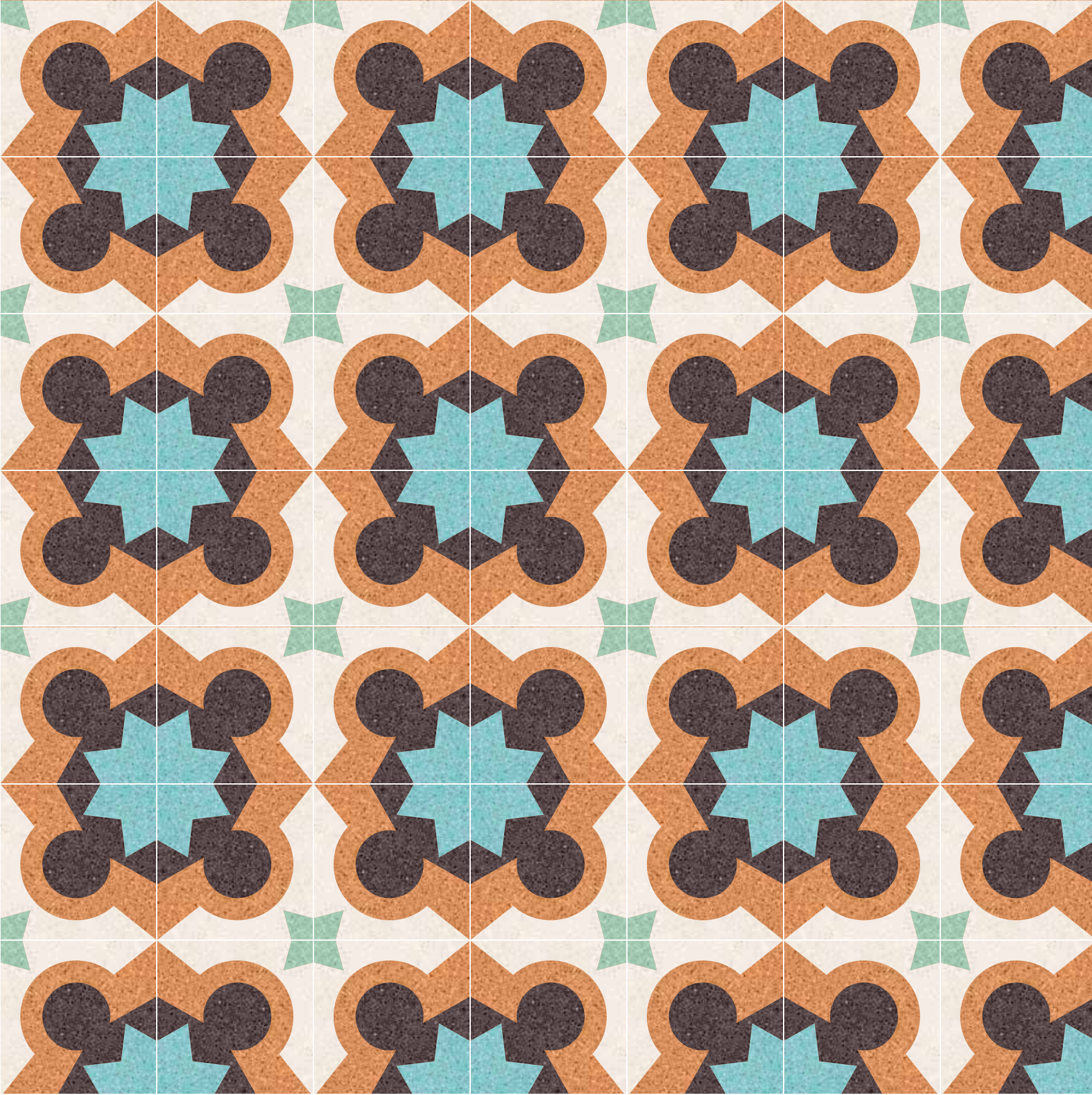
AGUADA



dimensione / size
20x20 cm

colori / colours
bianco cristallo, malva, pacifico

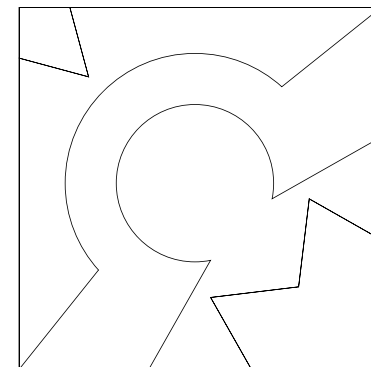




PUERTO RICO
collezione decori ricerca
research decorations' collection

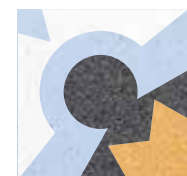
AGUADILLA

10
11



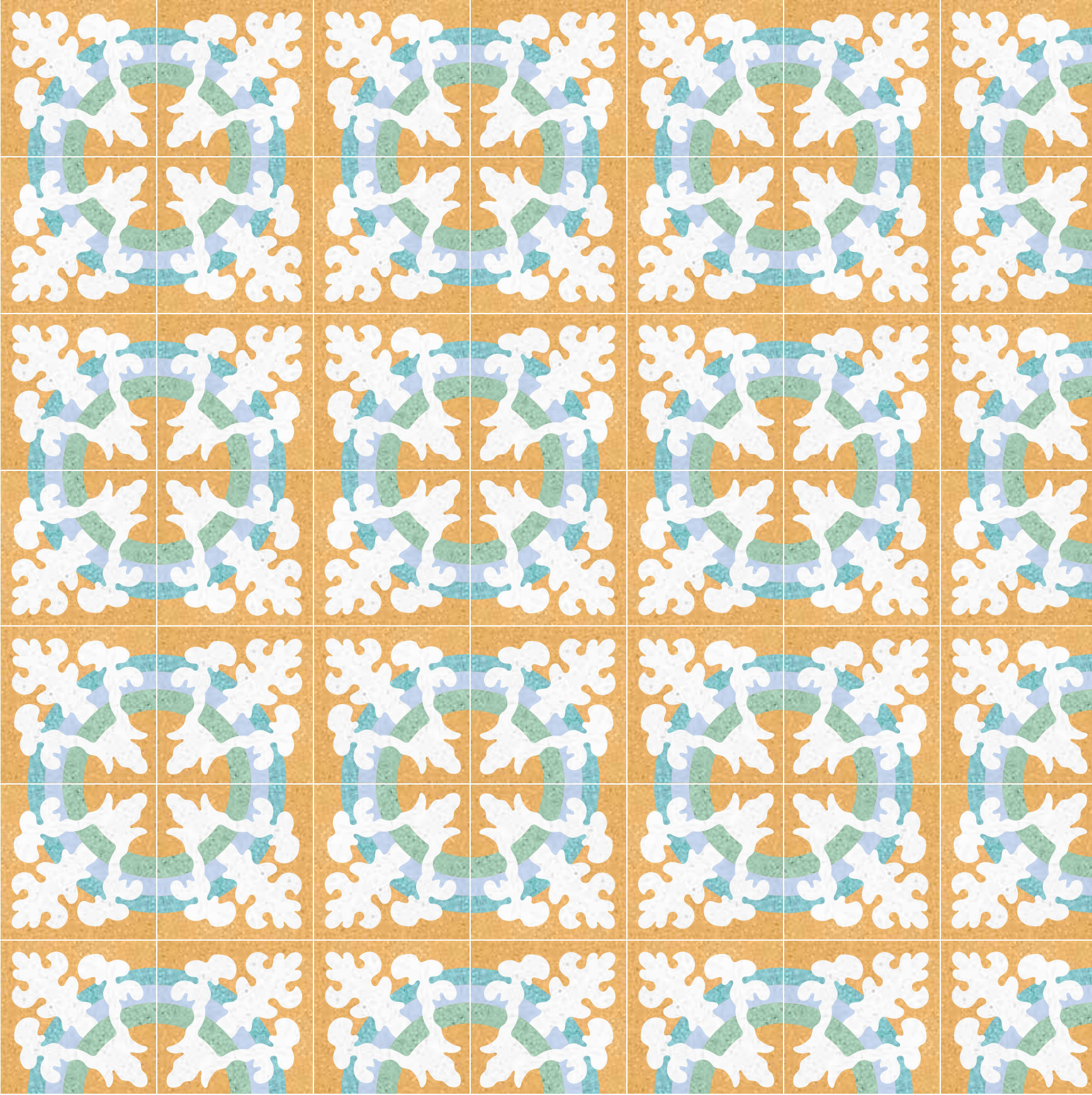
dimensione / size
20x20 cm

colori / colours
amazonia, ginger, avorio, pacifico, wengè





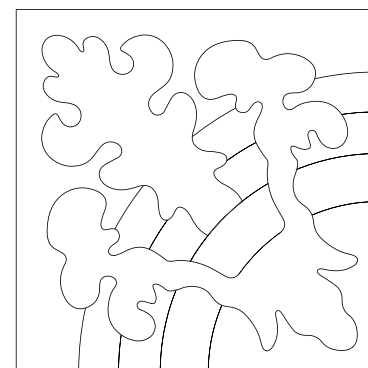
AGUADILLA / AGUADA
avorio, amazzonia, ginger, wengè, pacifico



PUERTO RICO
collezione decori ricerca
research decorations' collection

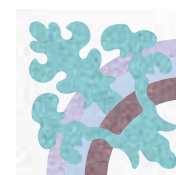
CAGUAS

14
15



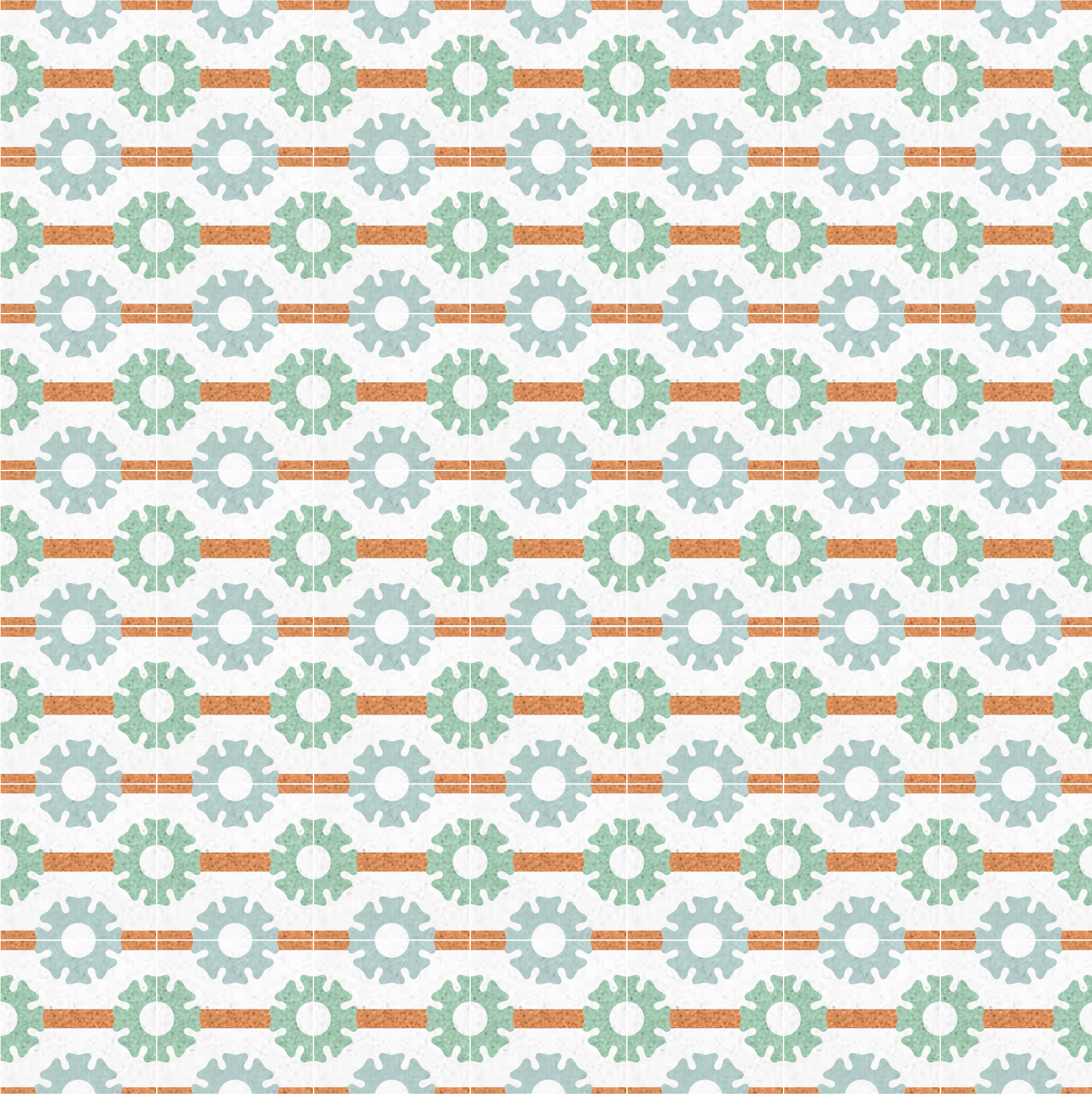
dimensione / size
20x20 cm

colori / colours
giallo oro, bianco cristallo, pacifico, amazzonia, turchino





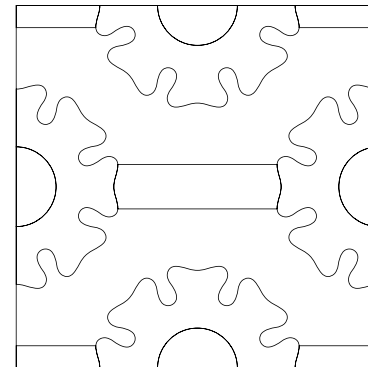
CAGUAS
kiwi, bianco cristallo, lava, menta, pacifico



PUERTO RICO
collezione decori ricerca
research decorations' collection

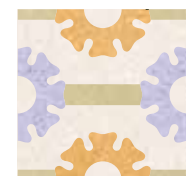
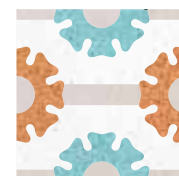
CAROLINA

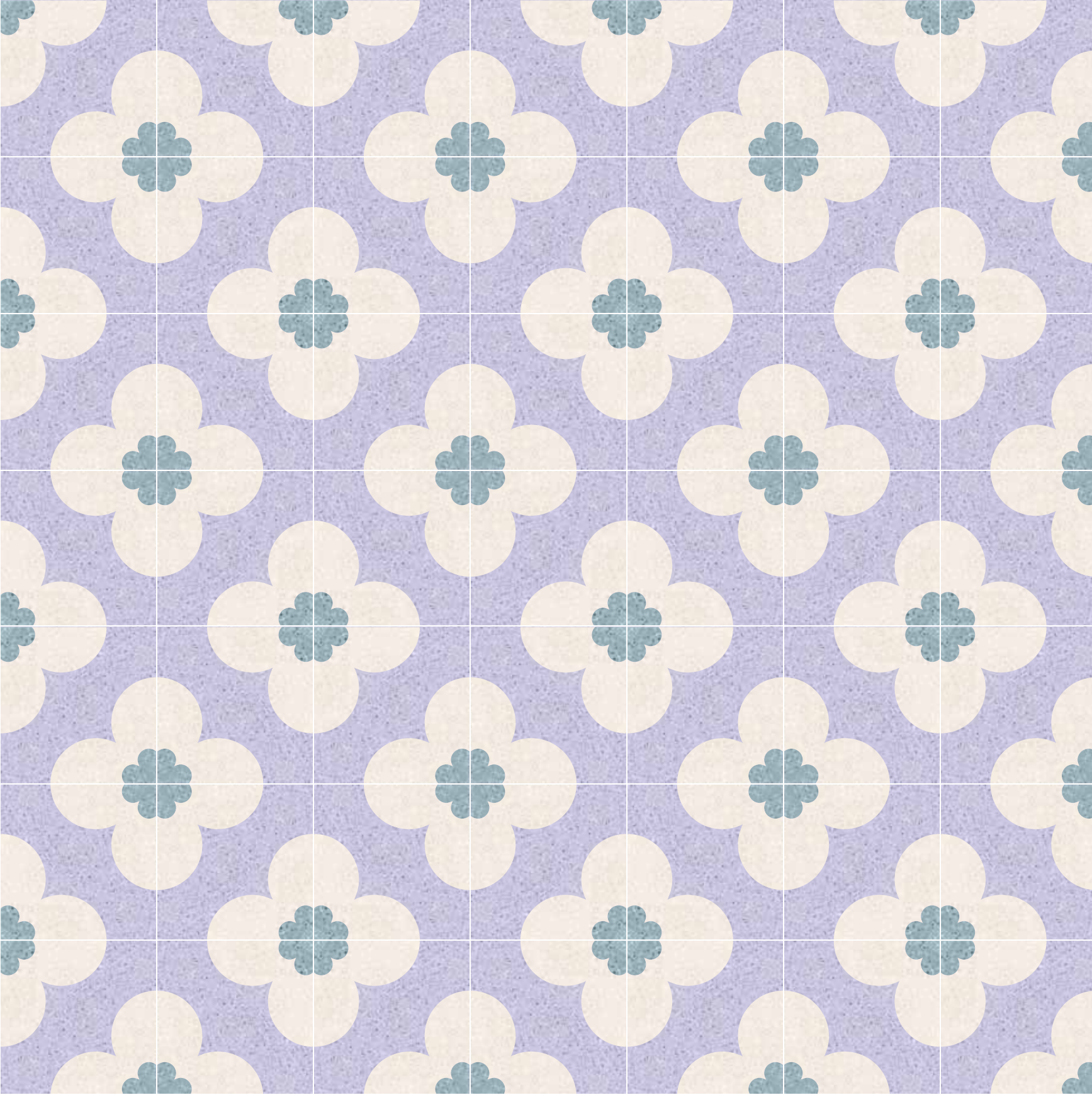
18
19



dimensione / size
20x20 cm

colori / colours
bianco cristallo, menta, amazzonia, ginger

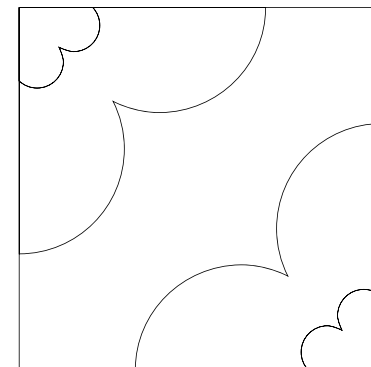




PUERTO RICO
collezione decori ricerca
research decorations' collection

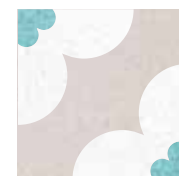
GUANICA

20
21



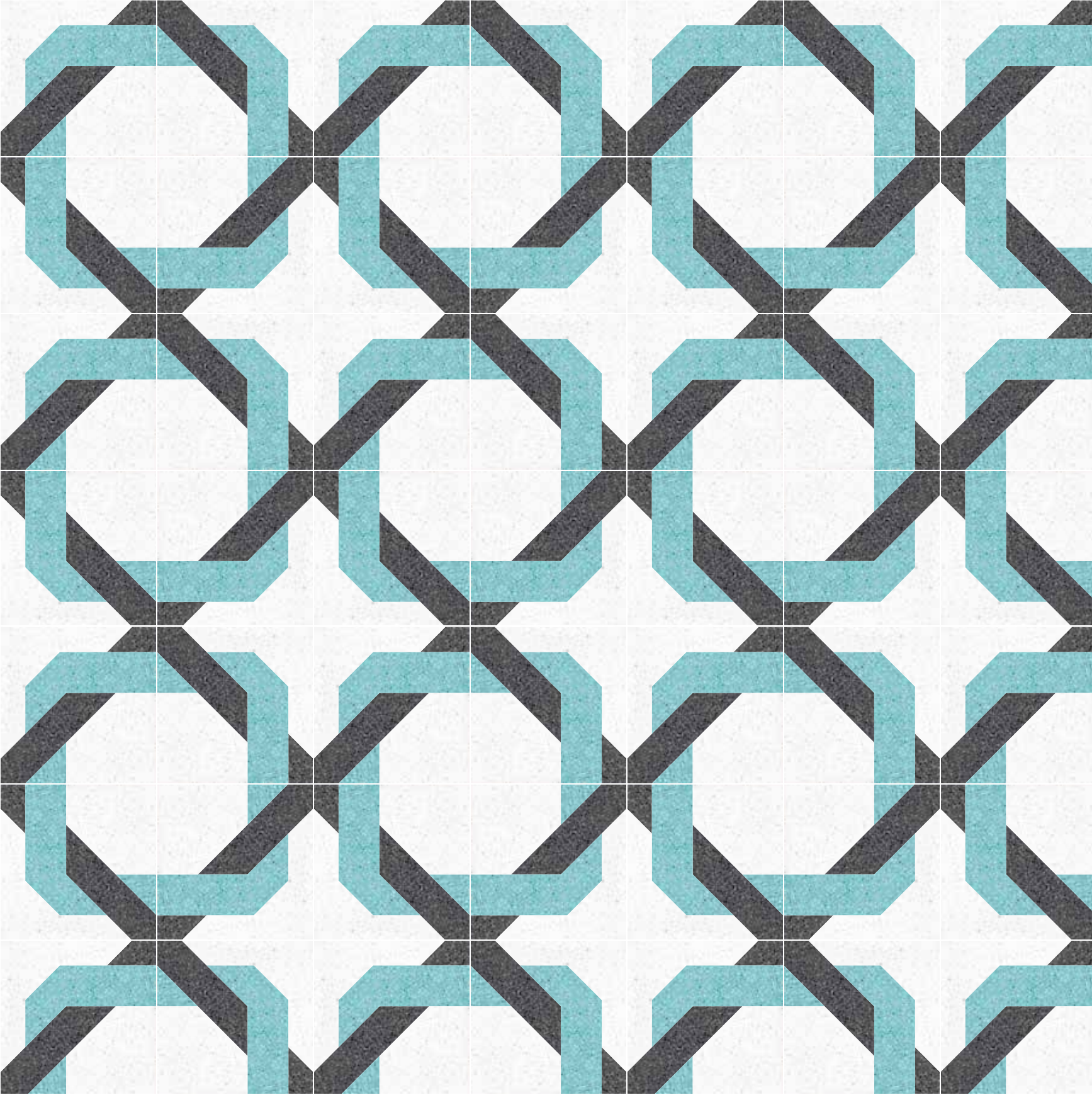
dimensione / size
20x20 cm

colori / colours
malva, avorio, carta da zucchero





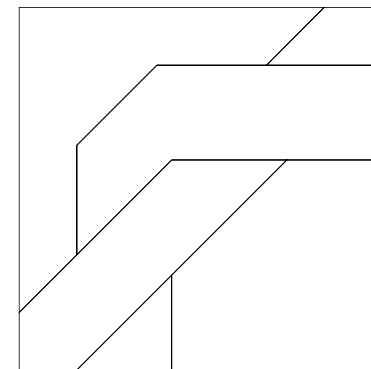
GUANICA
avorio, pacifico, menta



PUERTO RICO
collezione decori ricerca
research decorations' collection

HATILLO

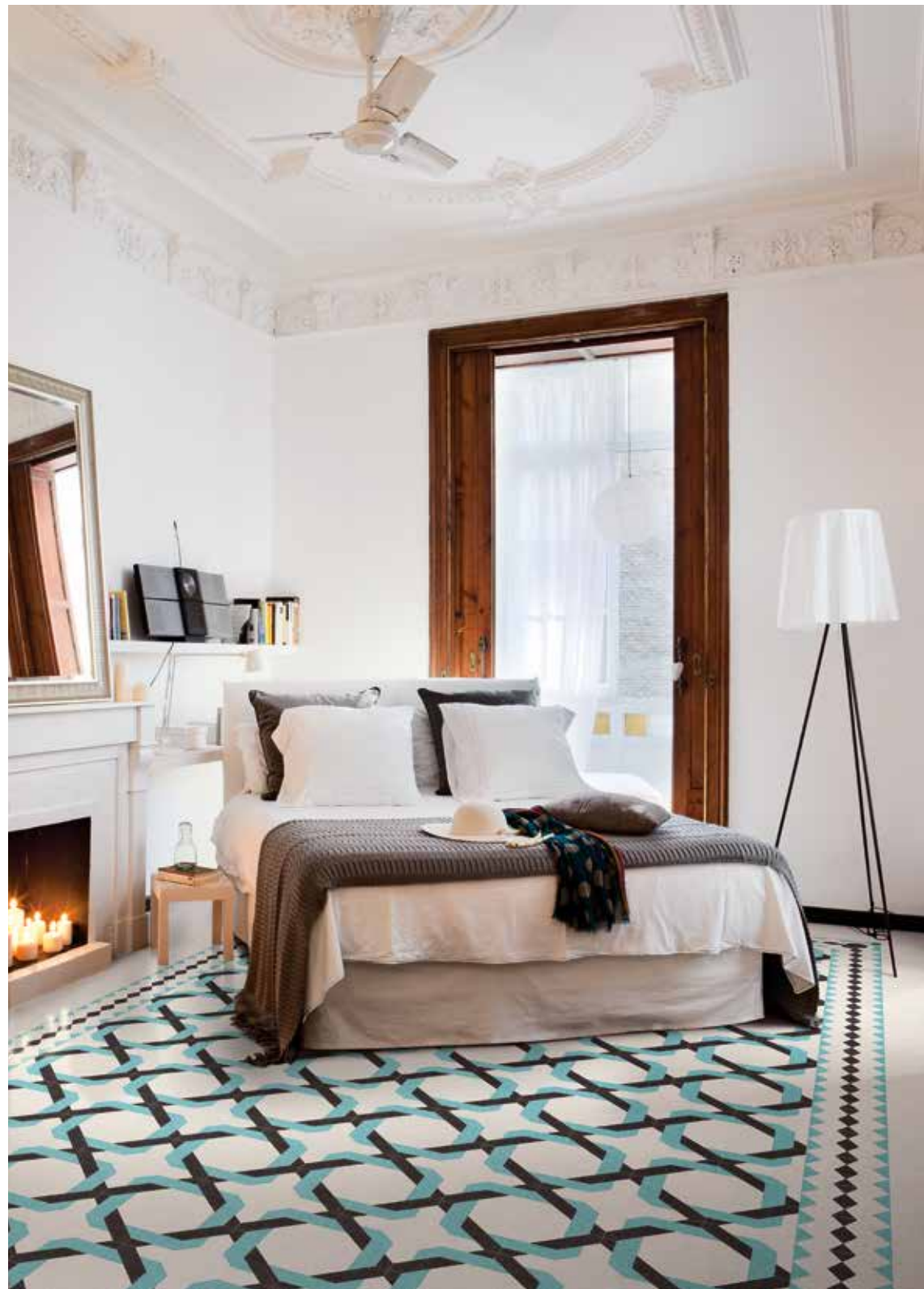
24
25



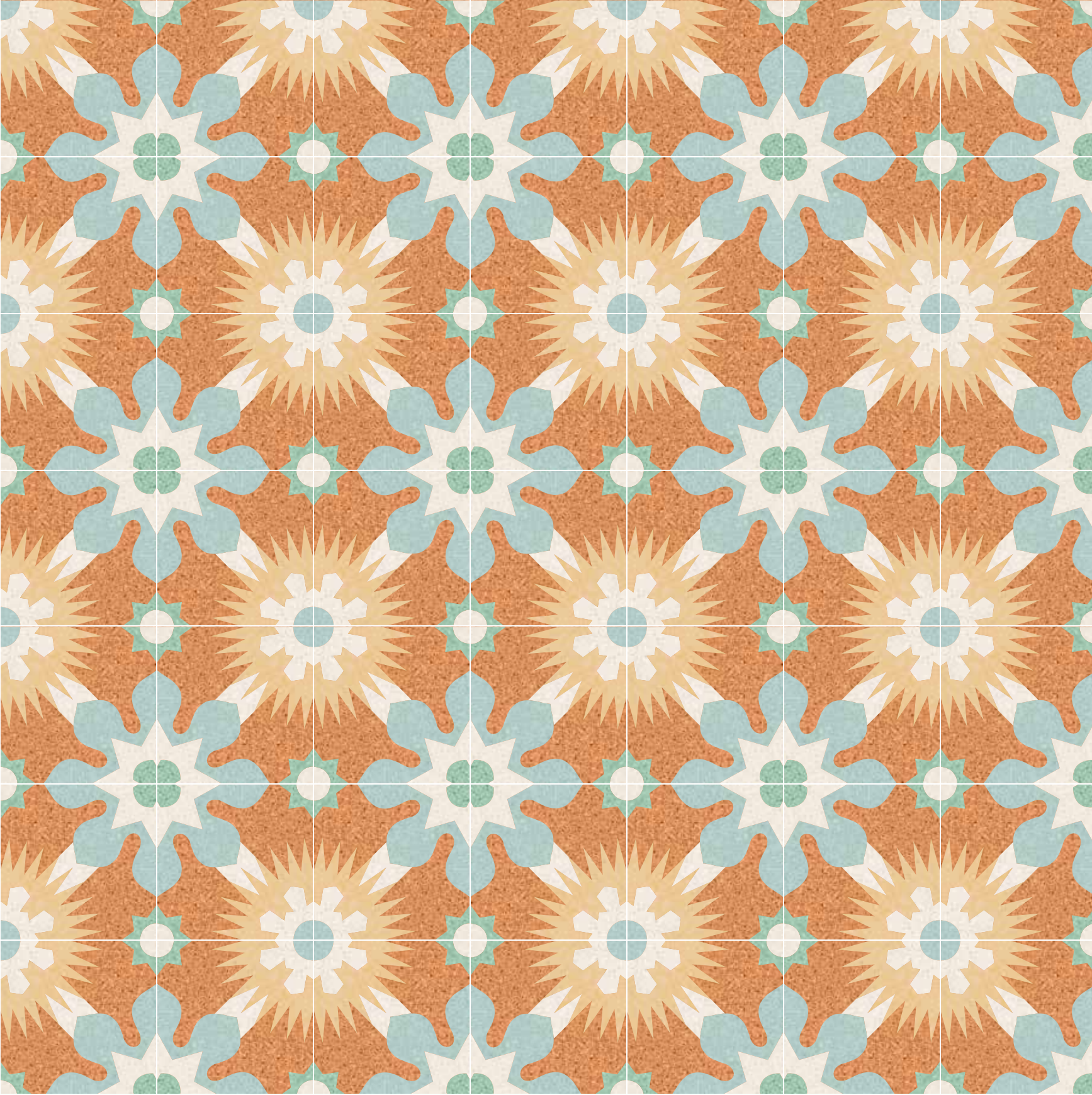
dimensione / size
20x20 cm

colori / colours
lava, bianco cristallo, pacifico





HATILLO / AGUADA / AGUADILLA
avorio, wengè, pacifico



PUERTO RICO
collezione decori ricerca
research decorations' collection

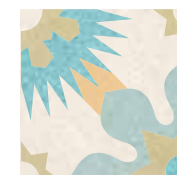
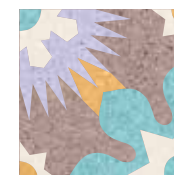
ISABELA

28
29



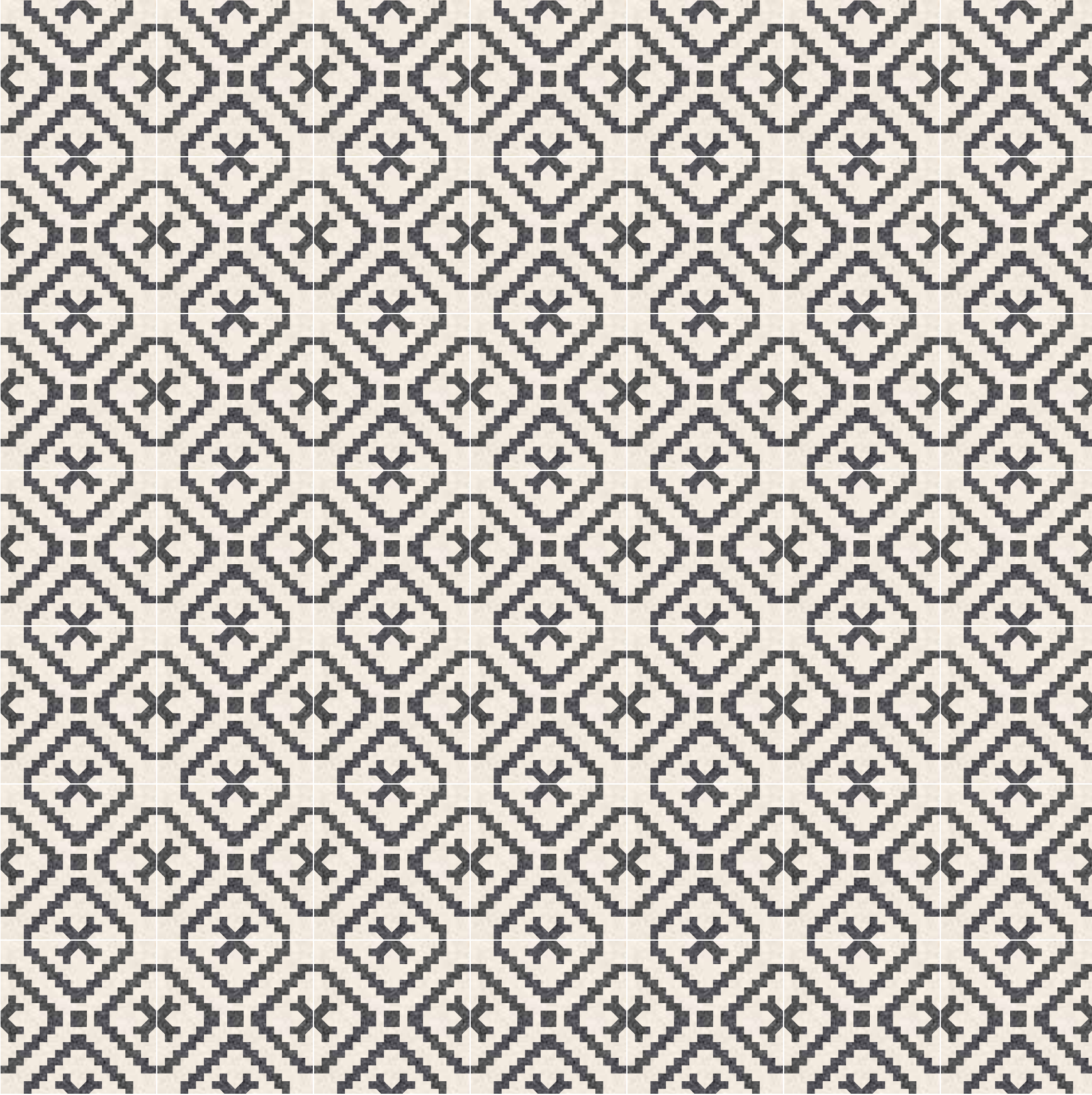
dimensione / size
20x20 cm

colori / colours
menta, ginger, avorio, amazzonia, grano



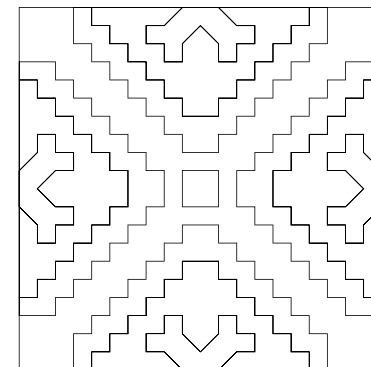


ISABELA
tortora, bianco cristallo, ginger, pacifico, lava, amazzonia



PUERTO RICO
collezione decori ricerca
research decorations' collection

LOIZA



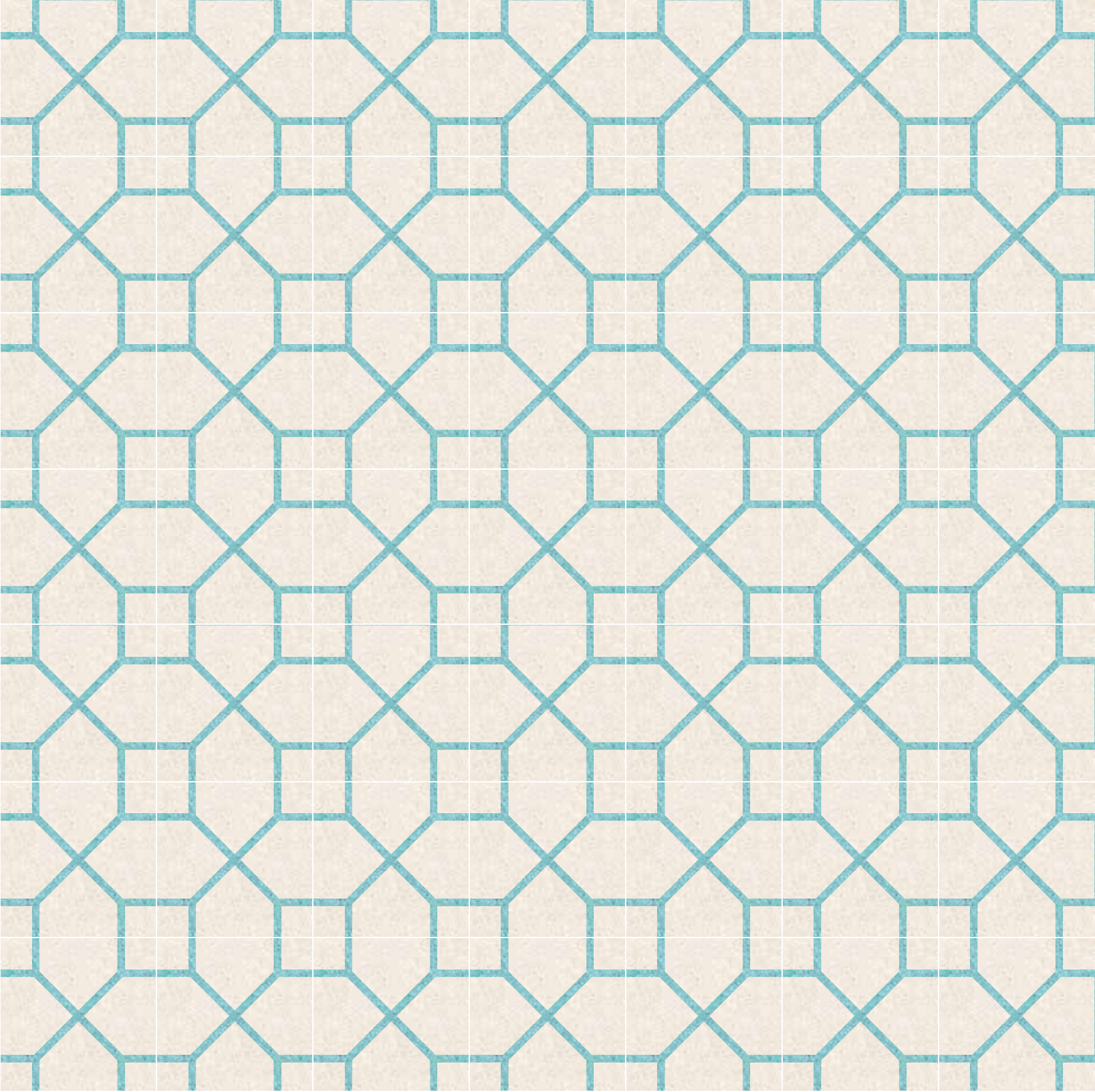
dimensione / size
20x20 cm

colori / colours
avorio, lava





LOIZA
avorio, lava

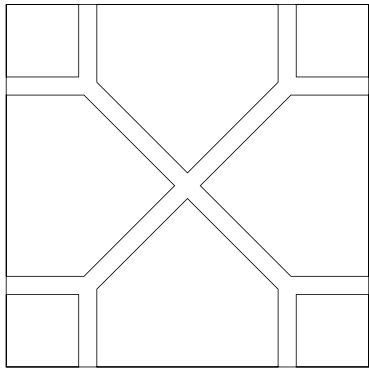


PUERTO RICO
collezione decori ricerca
research decorations' collection

MAYAGUEZ

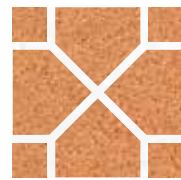
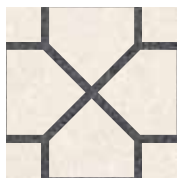


36
37



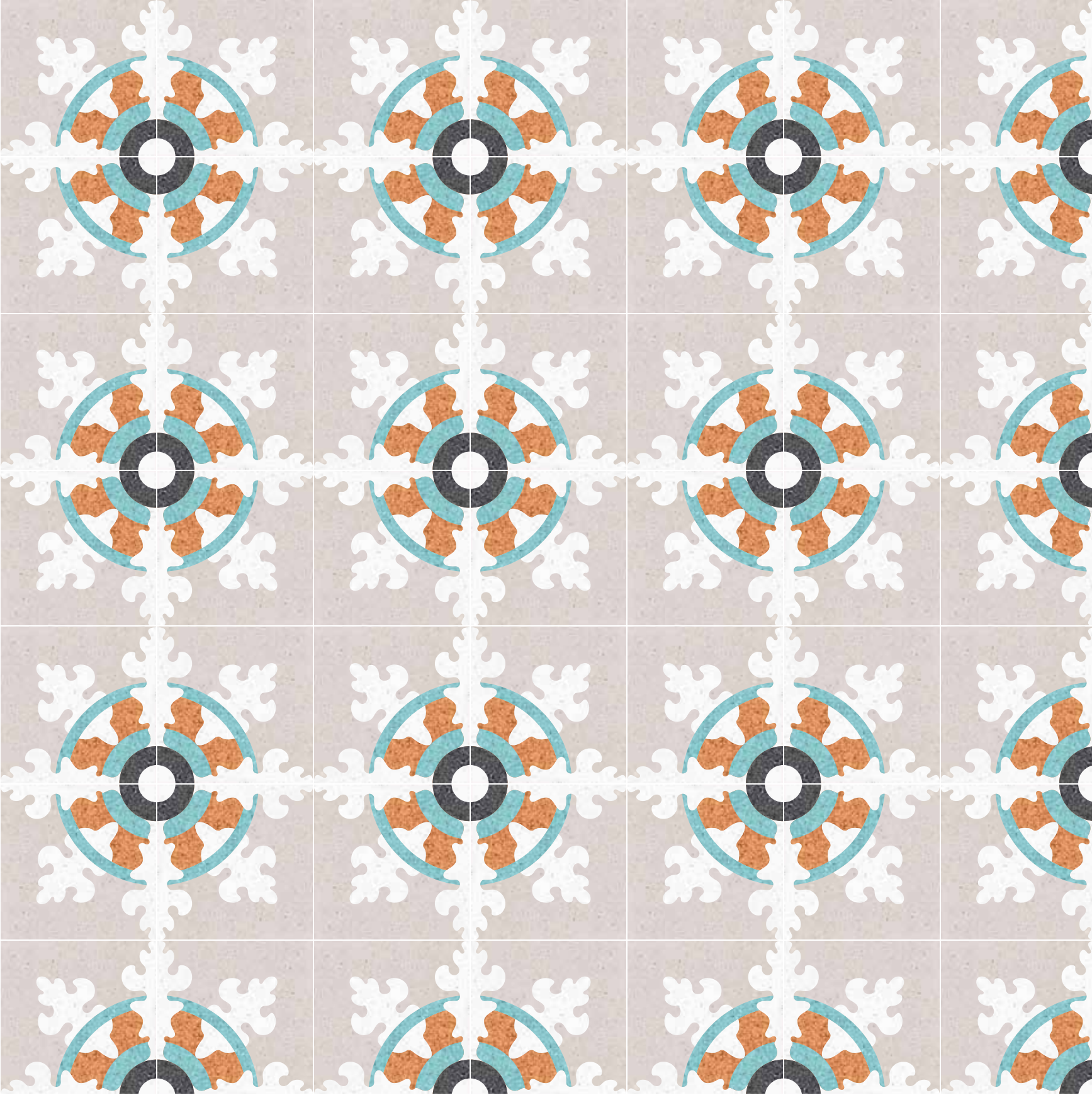
dimensione / size
20x20 cm

colori / colours
avorio, pacifico





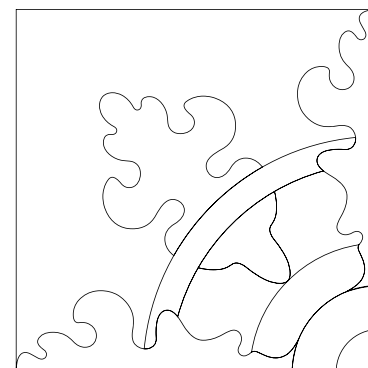
MAYAGUEZ
bianco cristallo, lava, polvere, giallo oro, pacifico



PUERTO RICO
collezione decori ricerca
research decorations' collection

PARGUERA

40
41



dimensione / size
20x20 cm

colori / colours
tortora, lava, pacifico, bianco cristallo, ginger





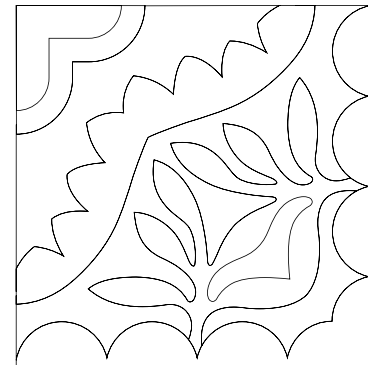
PARGUERA
tortora, bianco cristallo, pacifico, ginger, lava



PUERTO RICO
collezione decori ricerca
research decorations' collection

PENUELAS

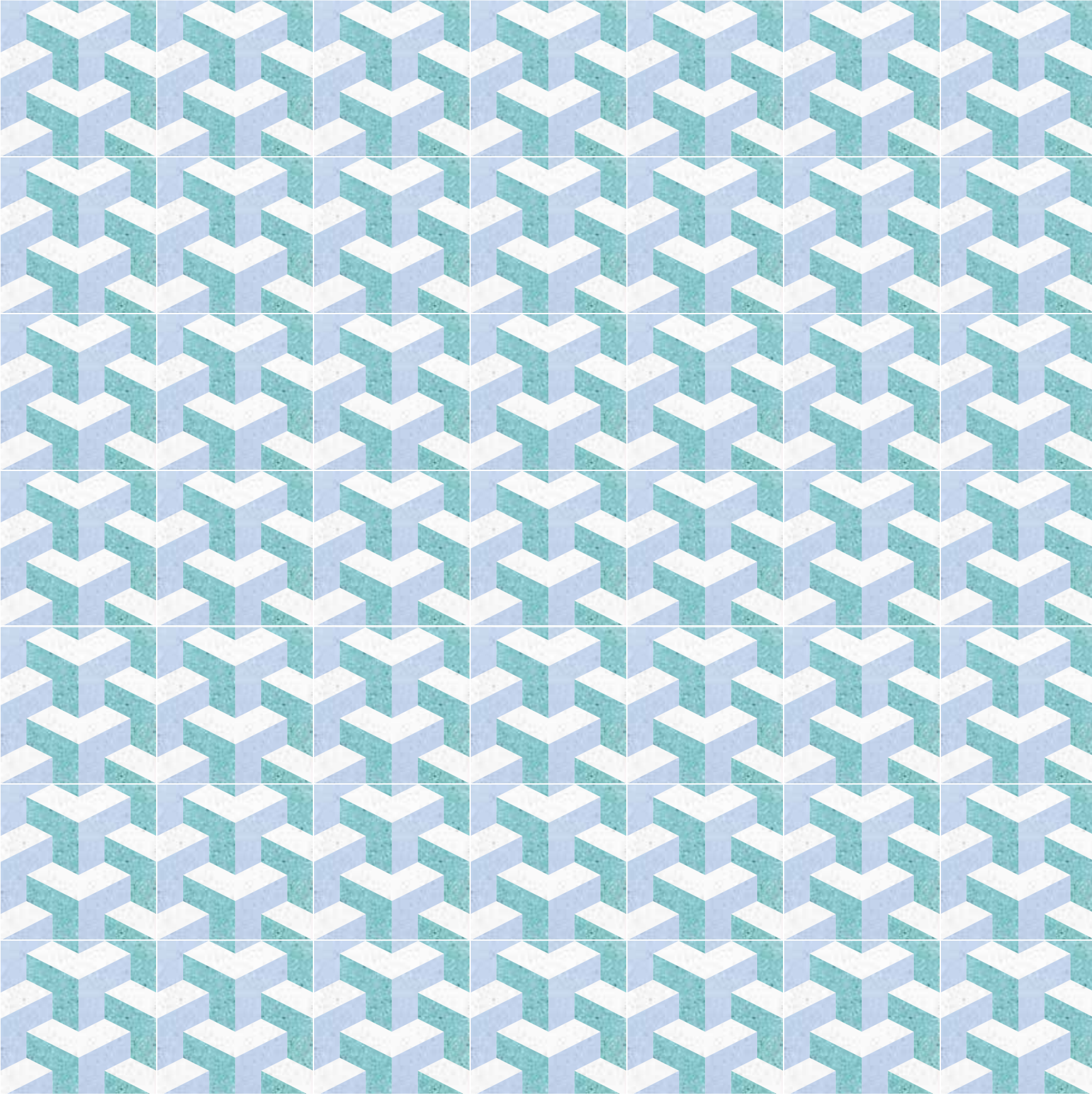
44
45



dimensione / size
20x20 cm

colori / colours
kiwi, ginger, lava, bianco cristallo

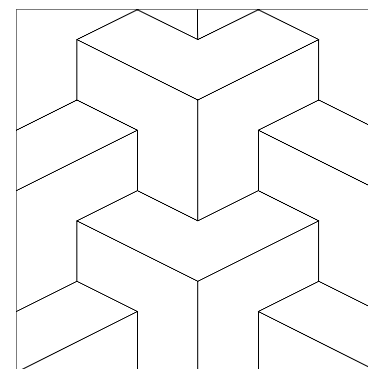




PUERTO RICO
collezione decori ricerca
research decorations' collection

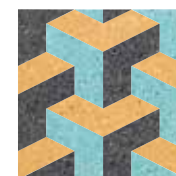
PONCE

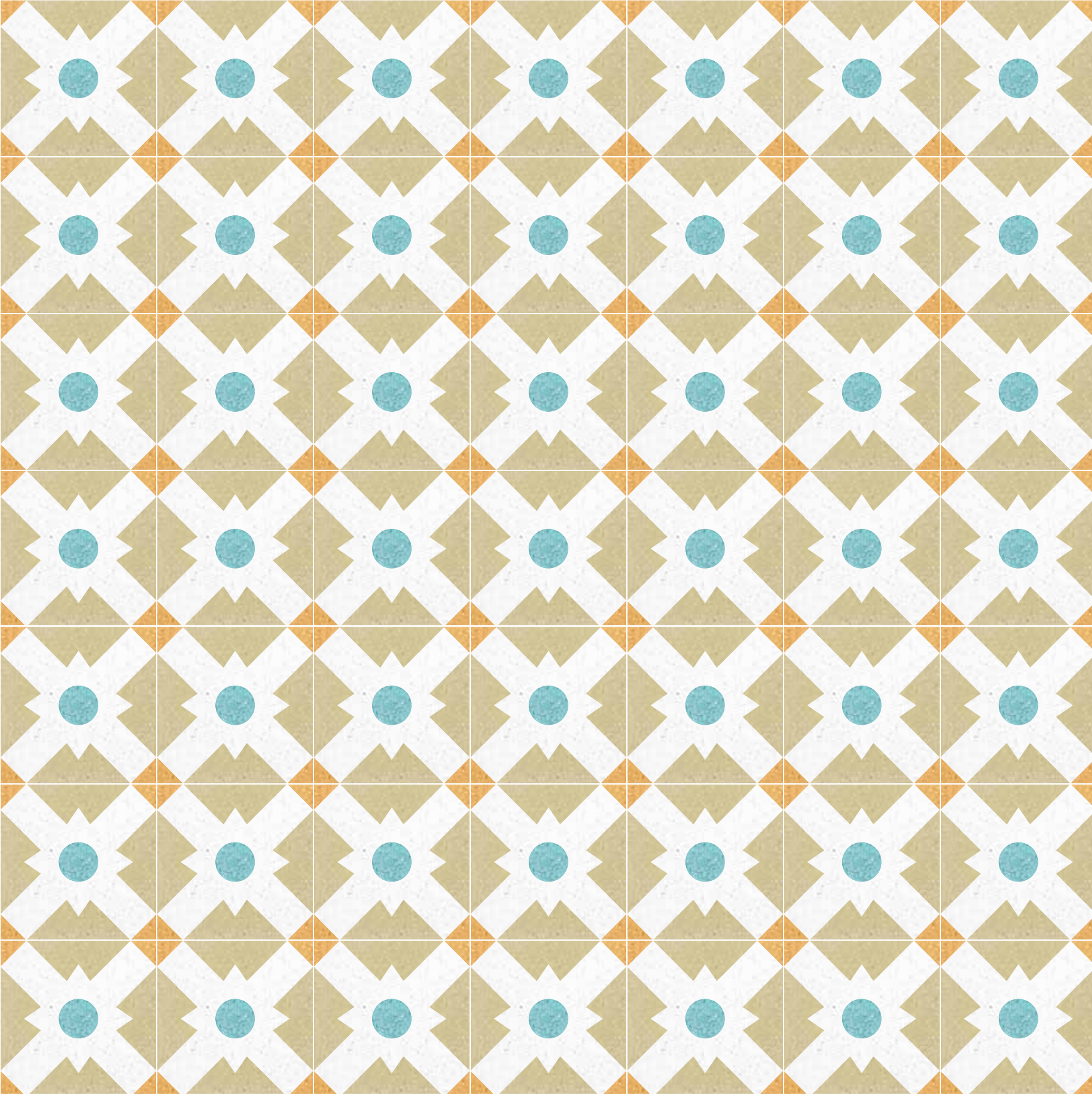
46
47



dimensione / size
20x20 cm

colori / colours
pacifico, bianco cristallo, turchino

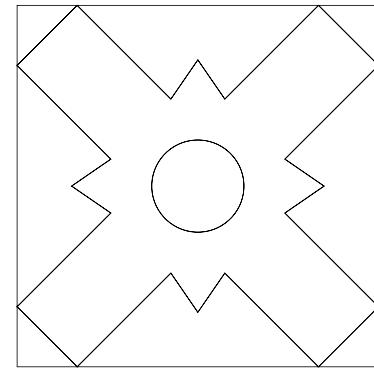




PUERTO RICO
collezione decori ricerca
research decorations' collection

SAN JUAN

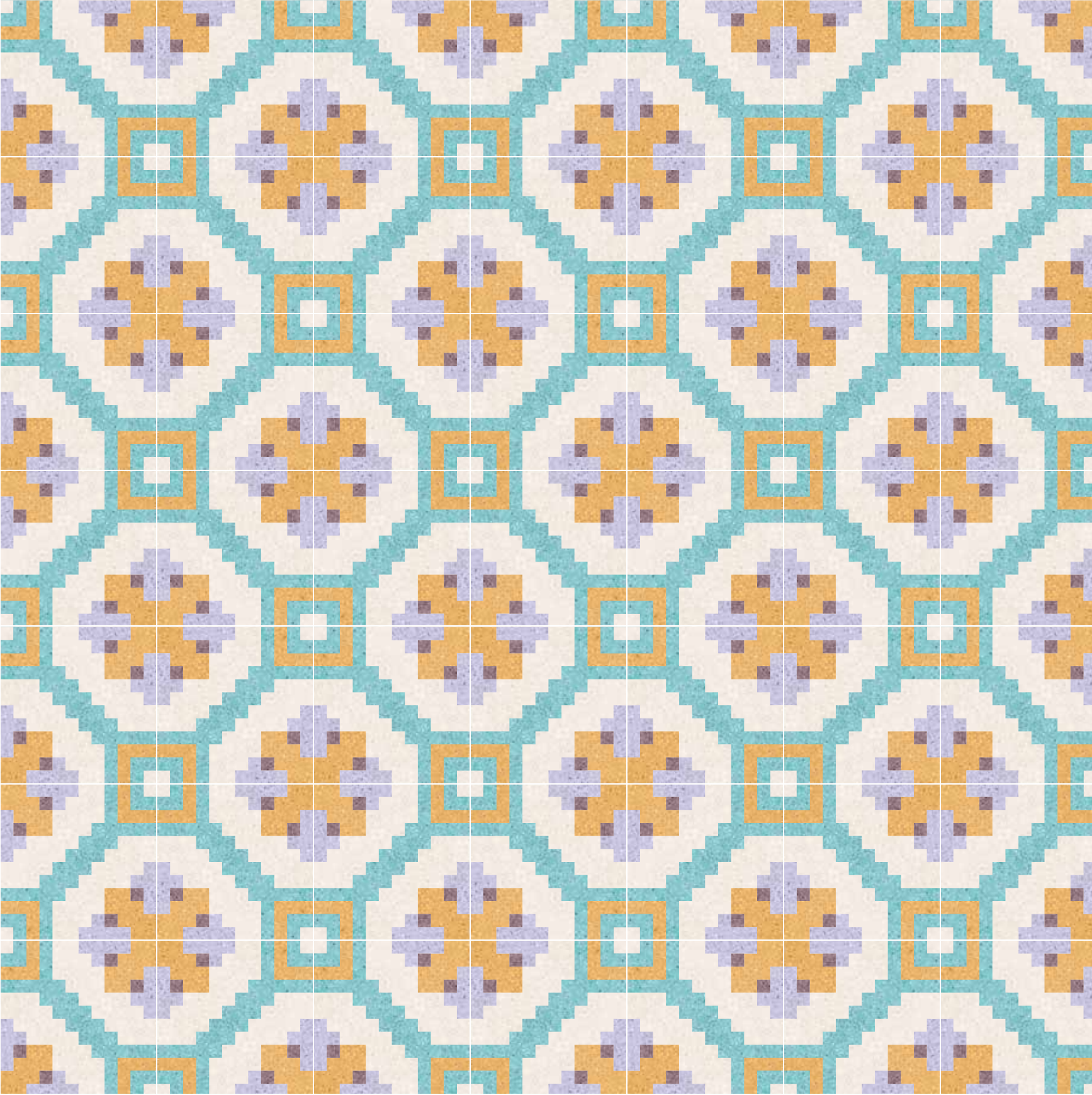
48
49



dimensione / size
20x20 cm

colori / colours
kiwi, bianco cristallo, pacifico, giallo oro

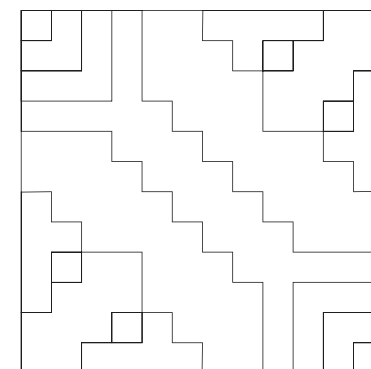




PUERTO RICO
collezione decori ricerca
research decorations' collection

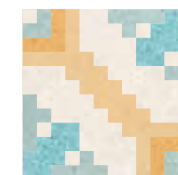
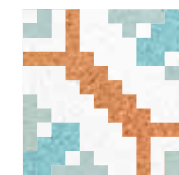
YABUCOA

50
51



dimensione / size
20x20 cm

colori / colours
giallo oro, avorio, pacifico, malva, melanzana





YABUCOA
avorio, menta, giallo oro, grano, pacifico



La gamma dei colori MIPA vi dà la possibilità di cambiare l'anima ad ogni decoro.
Un colore può definire uno stile, un'atmosfera ma anche condizionare il contesto di un ambiente rendendolo contemporaneo o tradizionale.

Per questo abbiamo sviluppato uno strumento che vi dà la possibilità di progettare direttamente online (www.customcoloursystem.it).

MIPA's range of colours gives you a chance to change the soul of every decoration. A colour can define a style, an ambience, but also influence the context to make it either contemporary or traditional.




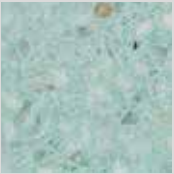
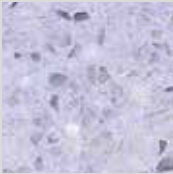
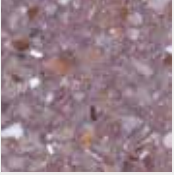

This is why we developed a tool you can use to make your designs directly online (www.customcoloursystem.it).

SOLO PER DECORI ONLY FOR DECORATIONS


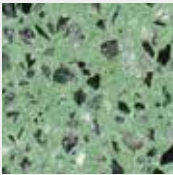
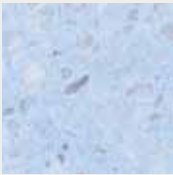
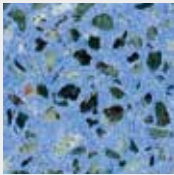





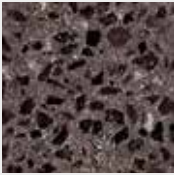
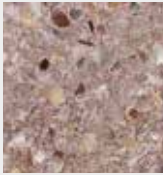



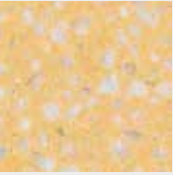
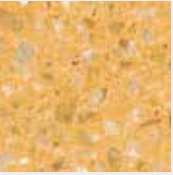
Per la collezione Puerto Rico sono stati creati nuovi colori, che potranno essere utilizzati con tutti i decori delle collezioni MIPA.

New colours were developed for the Puerto Rico collection, which may be used with all decorative solutions in the MIPA collections.

NEW

	Ginger
	Pacifico
	Amazonia
	Menta
	Malva
	Melanzana
	Kiwi

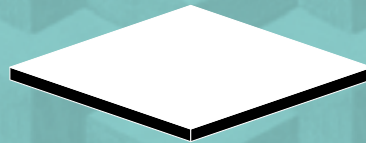
PER DECORI E TINTE UNITE FOR DECORATIONS AND SOLID COLOURS

				
Acqua marina	Verde bosco	Turchino	Blue jeans	Carta da zucchero
				
Avorio	Bianco cristallo	Tortora	Grigio argento	Polvere
				
Grisaglia	Lava	Nero intenso	Wengè	Terra
				
Cipria	Pelle d'angelo	Rosa antico	Ruggine	Rosso Pompei
				
Grano	Giallo oro			



FORMATO
FORMAT

20x20 cm



dimensione / size
20x20 cm

spessore / thickness
11 mm / 12,5±0,5 mm

finitura / finish
Classic, Light Lux, Light Mat,
Light Bloom

CLASSIC

Formella in graniglia monostrato 20x20 cm prelevigata (finitura grana 120) da lucidare in opera con bordi non bisellati. Spessore 12,5±0,5 mm.

12,5±0,5 mm thick through body marble Graniglia tile 20x20, semi polished, to be polished after laying with unchamfered edges.

LIGHT LUX

Formella in graniglia monostrato 20x20 cm spessore 11 mm, calibrata, rettificata. Bordi bisellati e superficie lucida.

11 mm thick through body marble Graniglia tile 20x20, calibrated, rectified. Chamfered edges and polished surface.

LIGHT MAT

Formella in graniglia monostrato 20x20 cm spessore 11 mm, calibrata, rettificata. Bordi bisellati e superficie levigata MAT.

11 mm thick through body marble Graniglia tile 20x20, calibrated, rectified. Chamfered edges and mat surface.

LIGHT BLOOM

Formella in graniglia monostrato 20x20 cm spessore 11 mm, calibrata, rettificata. Superficie spazzolata.

11 mm thick through body marble Graniglia tile 20x20, calibrated, rectified. Brushed surface.

ROCK'N' ROLL

Formella in graniglia monostrato 10x10 cm spessore 11 mm. Anticata artigianalmente.


11 mm thick through body marble Graniglia tile 10x10. Antiqued handcrafted.

FINITURE
FINISHES

56

57

**FORMATI
E FINITURE**
**FORMATS
AND FINISHES**



Il valore dell'artigianalità e del fatto a mano
The value of handmade artisanal excellence

LA POESIA
DEL MADE
IN ITALY

THE POETRY
OF MADE
IN ITALY

TECNICA,
ARTIGIANALITÀ
QUALITÀ
ARTISAN EXCELLENCE
AND INDUSTRIAL
QUALITY

Il sistema della produzione e del consumo sta cambiando sempre di più.

Si assiste ad un ritorno di un consumo legato alla capacità del prodotto di raccontare la propria storia. La storia della produzione, dei valori identitari e culturali, del lavoro che vi sono eticamente e socialmente collegati.

Questo è il vero significato di un'espressione abusata come **Made in Italy**: la ricerca di un fare autentico legato all'expertise artigianale eccellente con cui viene ideato e realizzato un prodotto.

Il suo valore di cultura materiale è legato alla capacità di sintetizzare con una visione estetica il lavoro sulle materie prime (naturali, all'80% marmo italiano pregiato selezionato, prelavato, depolverato, a granulometria scelta).

MIPA, protagonista della riscoperta e dell'evoluzione dei pavimenti e rivestimenti in graniglia di marmo, coniuga eccellenza artigianale con qualità industriale.

Le materie prime naturali e le lavorazioni eco-compatibili danno origine ad un prodotto artigianale ed unico, allo stesso tempo di altissime prestazioni, profondamente tecnologico e soprattutto realizzato interamente in Italia.

Una dimensione nuova ed esclusiva, una visione originale e distintiva trasformano la graniglia in un pezzo di design che arricchisce e valorizza gli ambienti.

Production and consumption systems are changing increasingly.

There is a resumption of consumption connected to a product's ability to tell its own story, i.e. the history of production and the relevant identity, cultural and work values playing a role both ethically and socially.

This is the true meaning of an expression like "Made in Italy", which has often been overexploited, i.e. the search for an authentic approach to excellent artisan skills aimed at designing and manufacturing products. Material cultural values derive from the ability to add aesthetic value by processing raw materials (natural materials, i.e. 80% precious and selected, pre-washed, dusted, marble with selected granulometry).

MIPA, a protagonist in the rediscovery of marble Graniglia tiles for floors and wall coverings, combines artisan excellence and industrial quality.

Natural raw materials and environmentally-friendly processing produce unique top-performance handicrafts products with high tech-contents fully produced in Italy.

It is a new and exclusive dimension, an original and distinctive vision that turns marble Graniglia tiles into design products enriching and enhancing any environment.



© MIPA S.r.l. 2014


Ideazione e Grafica / *Concept and Graphic Design*
D+ / Wladimiro Bendandi (d-plus.it)


Design collezione / *Design collection*
Laura Renna

Coordinamento / *Coordination*
Ufficio Marketing MIPA, Laura Renna

Fotografie / *Photography*
Cristina Bagnara, Jordi Canosa, Vito Corvasce

pp. 2/3

flickr™ royalty free  **commons**

 by Josue Armando Serrano / Ricymar Photography

Nessuna immagine, testo o altra parte di questo catalogo può essere riprodotta senza autorizzazione scritta di MIPA s.r.l.

MIPA si riserva di apportare, senza preavviso, modifiche nei prodotti presenti in questo catalogo.

I colori dei materiali hanno valore indicativo in quanto soggetti alle tolleranze dei processi di stampa.

I marchi presenti in questo catalogo sono di proprietà delle rispettive organizzazioni.

No images, text or other part of this catalogue it may be reproduced without prior written consent from the MIPA s.r.l.

MIPA reserves to itself the right to modify or improve the technical features in any moment and without advice.

The colours of the materials are indicative as they are depending on the tolerances of the printing process.

The brands listed in this catalogue belong to the corresponding organizations.

Per questo catalogo sono state utilizzate carte ecologiche provenienti da coltivazioni controllate FSC e totalmente riciclabili.

This catalogue has been produced using sustainable paper obtained from FSC controlled wood and is entirely recyclable.



Sede / Head office
via Cantina 325 - 41017 Ravarino (MO) - ITALY
t. +39 059 818201 / f. +39 059 818212
info@mipadesign.it

mipadesign.it

