

MATERIA PRIMA



Free your imagination



MATERIA PRIMA

A volte le parole non bastano.
E allora servono i colori.
E le forme.
E le note.
E le emozioni

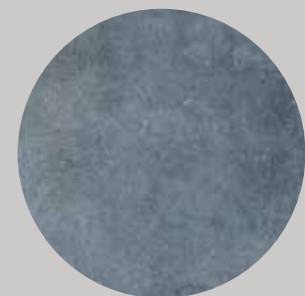
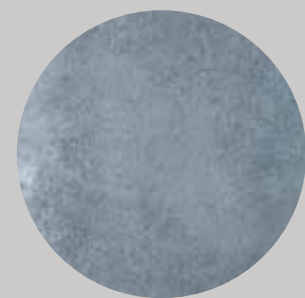
Alessandro Baricco



MATERIA PRIMA

Cloud White _ Grey Vetiver _ North Pole _ Navy Sea

Non mi stanco mai di un cielo azzurro.
- Vincent van Gogh -





Cloud White 40x40
Mosaico Rombo Navy Sea 25x25
Mosaico Rombo Mix Blue 25x25



Esagona North Pole 24x27,7
Wall12 Fabulous Blue 60x120 (collezione Showall)



modulare 8: Rombo Cloud White, Grey Vetiver, North Pole 13,7x24



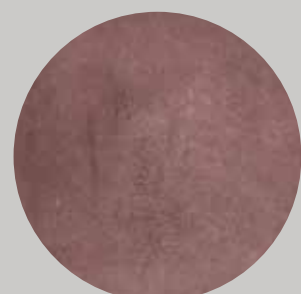
modulare 8: Rombo Cloud White, Grey Vetiver, North Pole 13,7x24
North Pole 40x40

MATERIA PRIMA

Cloud White _ Grey Vetiver _ Pink Velvet _ Jewel

Io credo nel rosa
Io credo che domani sarà un altro giorno,
Ed io credo nei miracoli.

- Audrey Hepburn -

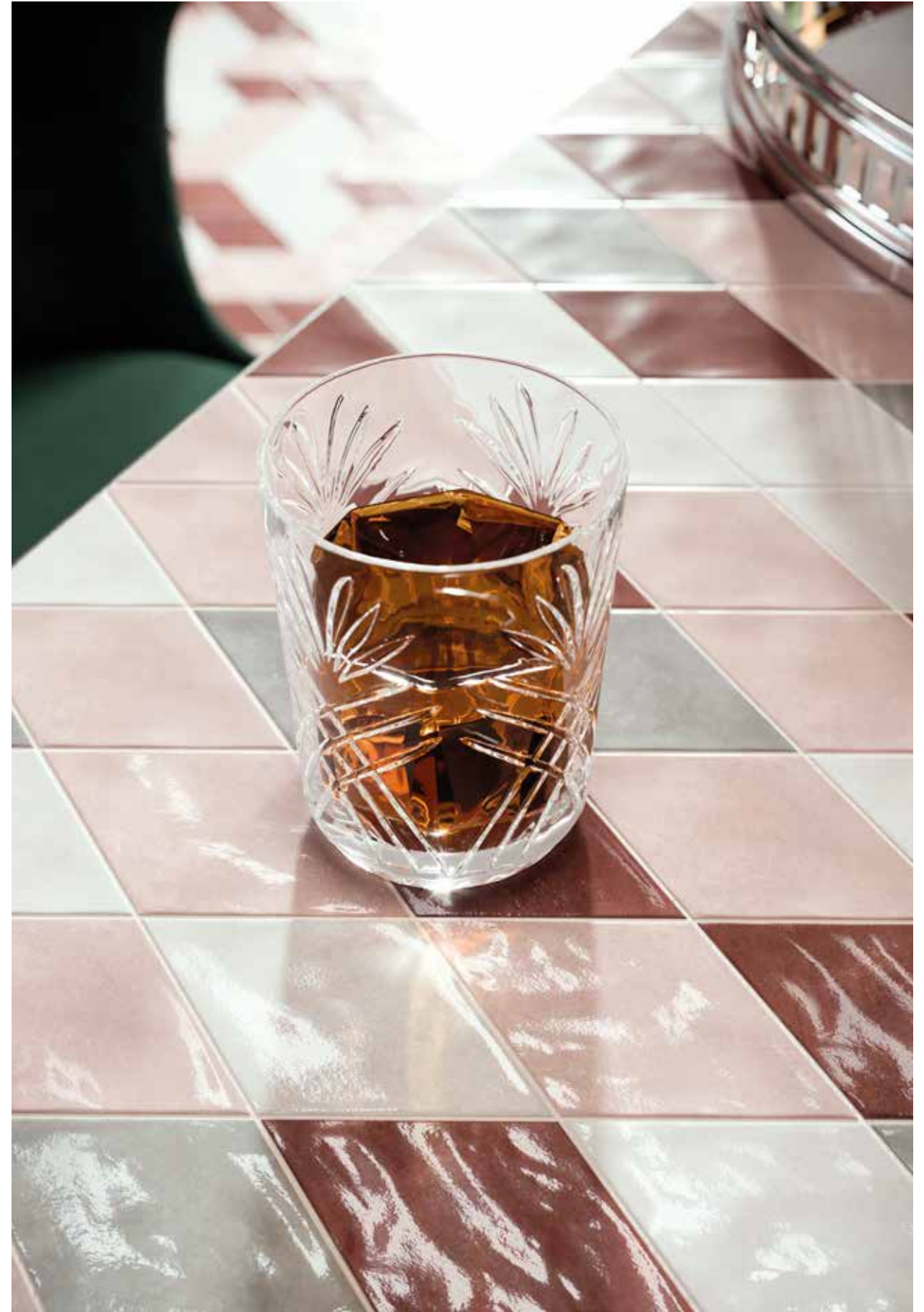




modulare 4: Rombo Pink Velvet, Jewel, Grey Vetiver 13,7x24
Pink Velvet 40x40



Mosaico Rombo Pink Velvet 25x25
modulare 10: Rombo Pink Velvet, Jewel, Cloud White 13,7x24



mosaico rombo Mix Pink 25x25

modulare 7: Rombo Pink Velvet, Jewel, Grey Vetiver 13,7x24



Mosaico Esagona Jewel 27x27
modulare 7: Rombo Pink Velvet, Jewel, Grey Vetiver 13,7x24

MATERIA PRIMA

Cloud White _ Grey Vetiver _ Soft Mint _ Hunter Green

Grigia è ogni teoria e
verde l'albero della vita
- Goethe -





Cloud White 40x40
Soft Mint 40x40 . 10x20

modulare 11: Rombo Cloud White, Soft Mint, Hunter Green 13,7x24



modulare 11: Rombo Cloud White, Soft Mint, Hunter Green 13,7x24
Cloud White 20x20



Soft Mint 40x40
modulare 1: Rombo Cloud White, Hunter Green 13,7x24



Cloud White 10x20
Soft Mint 40x40

MATERIA PRIMA

Cloud White _ Grey Vetiver _ Metropolitan Grey _ Black Storm

Erano il bianco e il nero, due categorie estreme,
in mezzo alle quali si stendeva una serie impressionante
di sfumature di grigio.

- Giorgio Faletti -

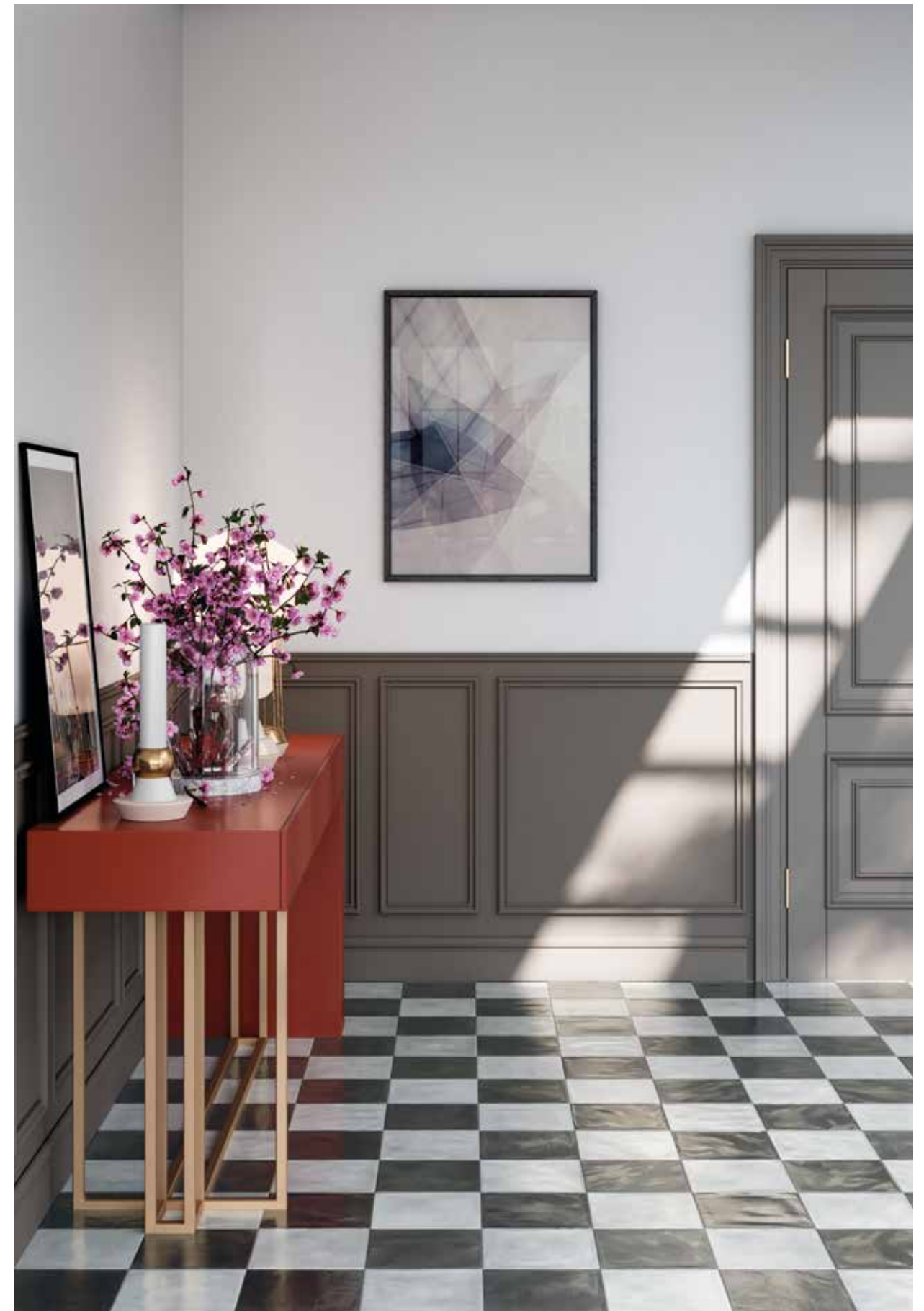




modulare 9: Rombo Cloud White, Metropolitan Grey 13,7x24 - Esagona Cloud White, Metropolitan Grey 24,27,1



modulare 9: Rombo Cloud White, Metropolitan Grey 13,7x24 . Esagona Cloud White, Metropolitan Grey 24x27,7



Cloud White 20x20 . Black Storm 20x20



Esagona Grey Vetiver 24x27,7
modulare 5: Rombo Black Storm 13,7x24 - Esagona Cloud White 24x27,7
Wall02 MyFair Grey 60x120 (collezione Showall)



Wall02 MyFair Grey 60x120 (collezione Showall)



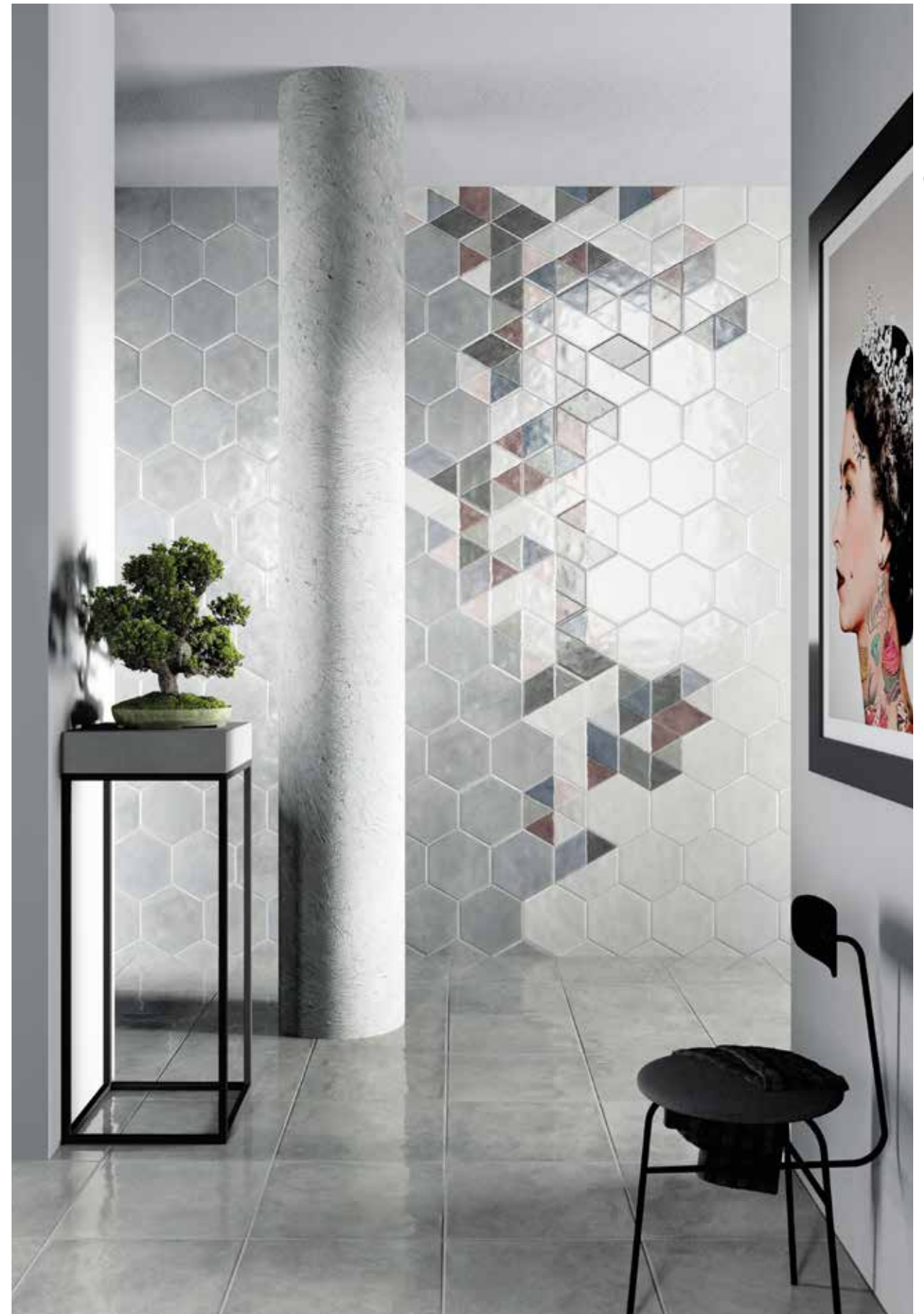
modulare 9: Rombo Cloud White, Grey Vetiver 13,7x24 - Esagona Cloud White, Grey Vetiver 24x27,7



Grey Vetiver 20x20
modulare 3: Rombo Cloud White, Grey Vetiver 13,7x24



Cloud White 20x20
 modulare 4: Rombo Cloud White, North Pole, Jewel 13,7x24



Grey Vetiver 40x40
 Esagona Cloud White, North Pole 24x27,7
 Inserto Rainbow Mix esagona 24x27,7



Soft Mint, Hunter Green 20x20
modulare 2: Rombo Cloud White, Soft Mint, Black Storm 13,7x24



modulare 6: Rombo Cloud White 13,7x24 . Esagona Soft Mint, Jewel 24x27,7



Soft Mint 40x40
Inserto Natural Green s/4 20x20

Cloud White, North Pole, Soft Mint 40x40



Navy Sea 20x20
modulare 10: Rombo Pink Velvet, Navy Sea, Cloud White 13,7x24



North Pole 10x20 . 40x40
Wall10 Spring 60x120 (collezione Showall)



Soft Mint, Hunter Green, Cloud White 10x20



Free your imagination

MATERIA PRIMA

COLLECTION

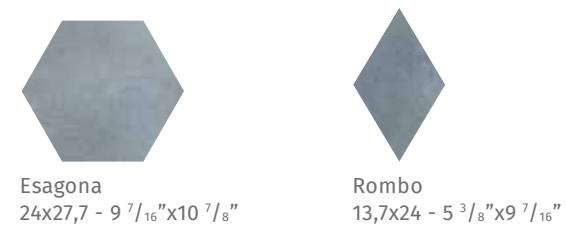
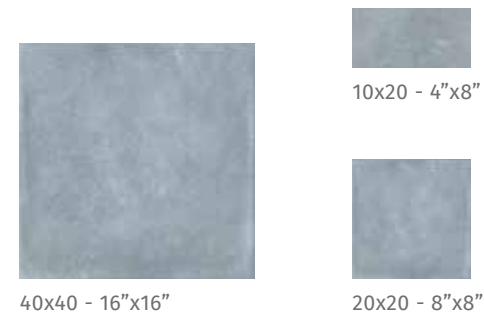
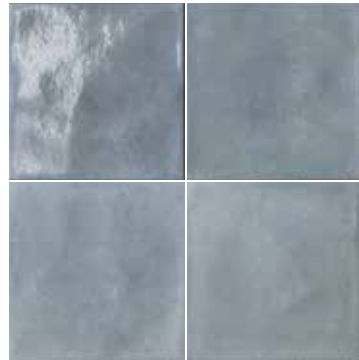
MATERIA PRIMA

Gres fine porcellanato smaltato
 Glazed Fine Porcelain Dtoneware
 Grès Cérame Fin Émaillé
 Glasiertes Feinsteinzeug
 Глазурованный Керамогранит

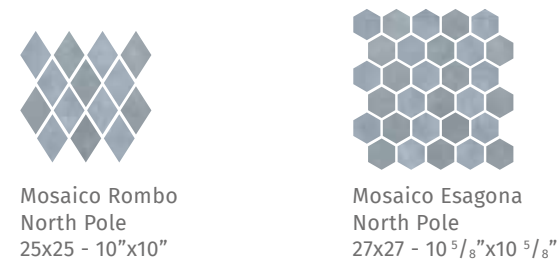


Spessore . Thickness . Épaisseur
 Stärke . Толщина . 10 mm

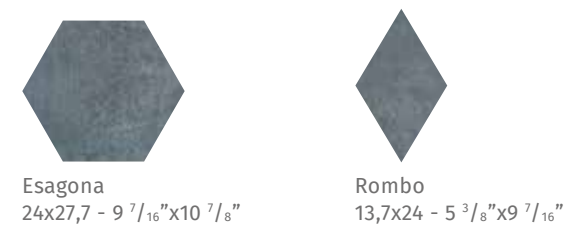
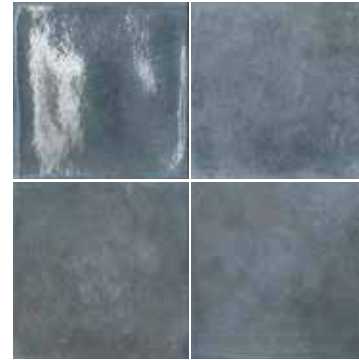
NORTH POLE



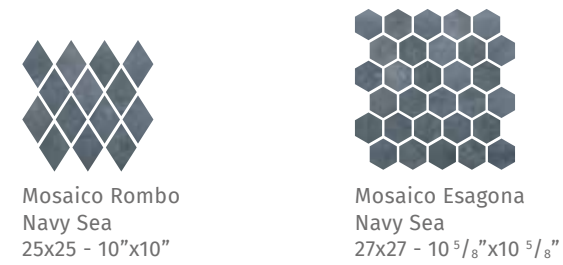
Mosaici . Mosaics . Mosaïques . Mosaiken . Мозаика



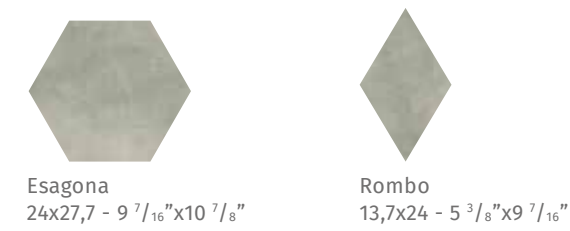
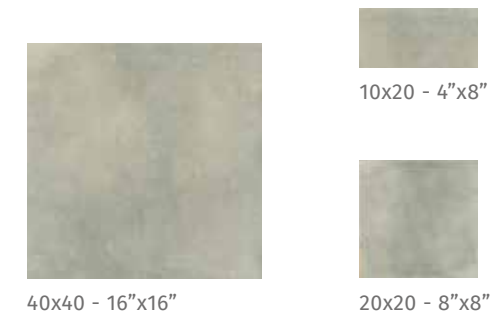
NAVY SEA



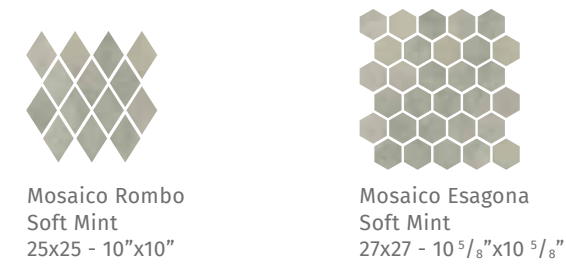
Mosaici . Mosaics . Mosaïques . Mosaiken . Мозаика



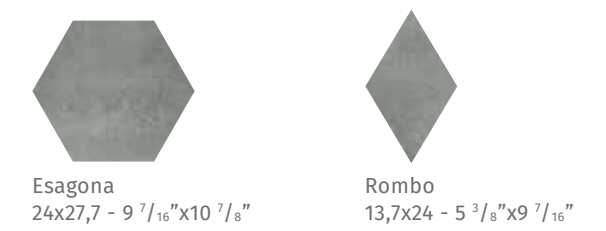
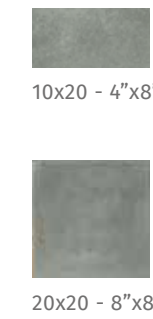
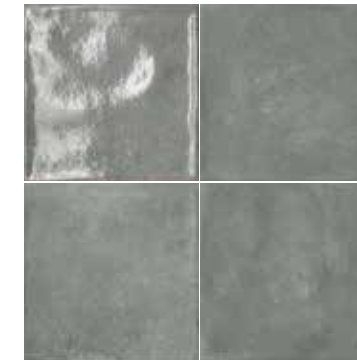
SOFT MINT



Mosaici . Mosaics . Mosaïques . Mosaiken . Мозаика



HUNTER GREEN



Mosaici . Mosaics . Mosaïques . Mosaiken . Мозаика



L'ufficio stile consiglia stucchi colorati a complemento di "Materia Prima" per creare ambienti unici e personalizzati.
 The style department recommends colored grout as complement to "Materia Prima" to create unique and personalized environments.

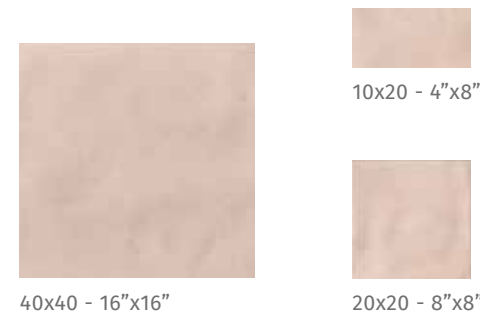
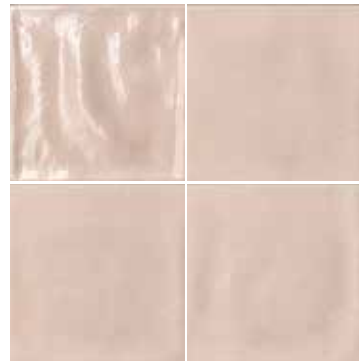
MATERIA PRIMA

Gres fine porcellanato smaltato
 Glazed Fine Porcelain Dtoneware
 Grès Cérame Fin Émaillé
 Glasiertes Feinsteinzeug
 Глазурованный Керамогранит



Spessore . Thickness . Épaisseur
 Stärke . Толщина . 10 mm

PINK VELVET



40x40 - 16"x16"

10x20 - 4"x8"

20x20 - 8"x8"

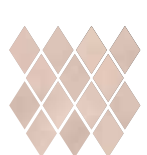


Esagona
 24x27,7 - 9 7/16"x10 7/8"

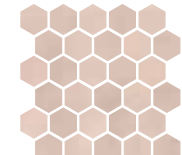


Rombo
 13,7x24 - 5 3/8"x9 7/16"

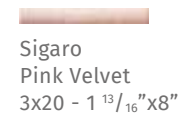
Mosaici . Mosaics . Mosaïques . Mosaiken . Мозаика



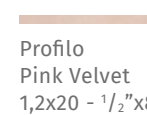
Mosaico Rombo
 Pink Velvet
 25x25 - 10"x10"



Mosaico Esagona
 Pink Velvet
 27x27 - 10 5/8"x10 5/8"

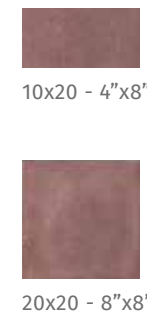


Sigaro
 Pink Velvet
 3x20 - 1 13/16"x8"



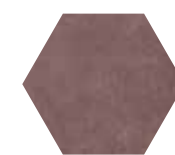
Profilo
 Pink Velvet
 1,2x20 - 1/2"x8"

JEWEL



10x20 - 4"x8"

20x20 - 8"x8"



Esagona
 24x27,7 - 9 7/16"x10 7/8"



Rombo
 13,7x24 - 5 3/8"x9 7/16"

Mosaici . Mosaics . Mosaïques . Mosaiken . Мозаика



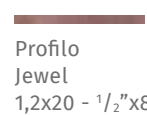
Mosaico Rombo
 Jewel
 25x25 - 10"x10"



Mosaico Esagona
 Jewel
 27x27 - 10 5/8"x10 5/8"



Sigaro
 Jewel
 3x20 - 1 13/16"x8"



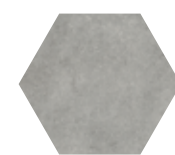
Profilo
 Jewel
 1,2x20 - 1/2"x8"

METROPOLITAN GREY



10x20 - 4"x8"

20x20 - 8"x8"



Esagona
 24x27,7 - 9 7/16"x10 7/8"

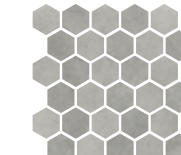


Rombo
 13,7x24 - 5 3/8"x9 7/16"

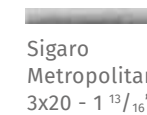
Mosaici . Mosaics . Mosaïques . Mosaiken . Мозаика



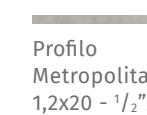
Mosaico Rombo
 Metropolitan Grey
 25x25 - 10"x10"



Mosaico Esagona
 Metropolitan Grey
 27x27 - 10 5/8"x10 5/8"

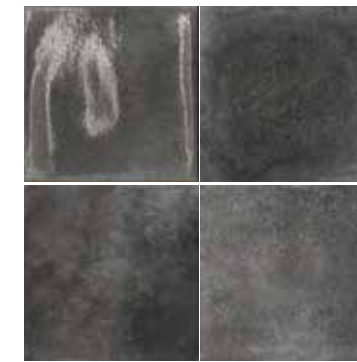


Sigaro
 Metropolitan Grey
 3x20 - 1 13/16"x8"



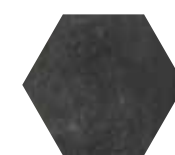
Profilo
 Metropolitan Grey
 1,2x20 - 1/2"x8"

BLACK STORM



10x20 - 4"x8"

20x20 - 8"x8"



Esagona
 24x27,7 - 9 7/16"x10 7/8"

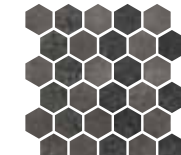


Rombo
 13,7x24 - 5 3/8"x9 7/16"

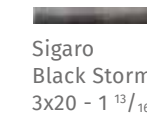
Mosaici . Mosaics . Mosaïques . Mosaiken . Мозаика



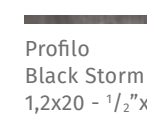
Mosaico Rombo
 Black Storm
 25x25 - 10"x10"



Mosaico Esagona
 Black Storm
 27x27 - 10 5/8"x10 5/8"



Sigaro
 Black Storm
 3x20 - 1 13/16"x8"



Profilo
 Black Storm
 1,2x20 - 1/2"x8"

L'ufficio stile consiglia stucchi colorati a complemento di "Materia Prima" per creare ambienti unici e personalizzati.
 The style department recommends colored grout as complement to "Materia Prima" to create unique and personalized environments.

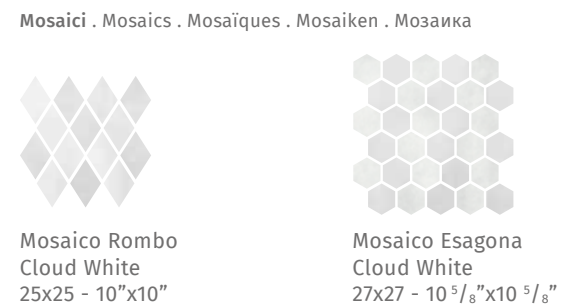
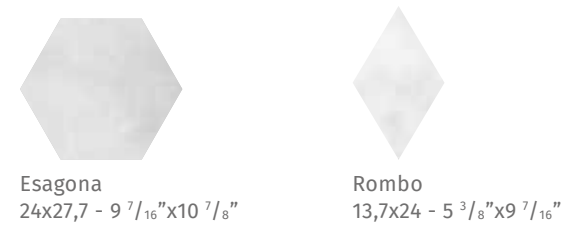
MATERIA PRIMA

Gres fine porcellanato smaltato
 Glazed Fine Porcelain Dtoneware
 Grès Cérame Fin Émaillé
 Glasiertes Feinsteinzeug
 Глазурованный Керамогранит

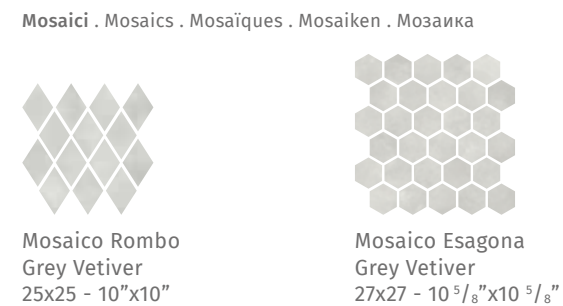
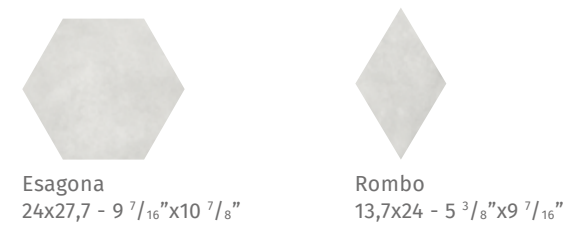
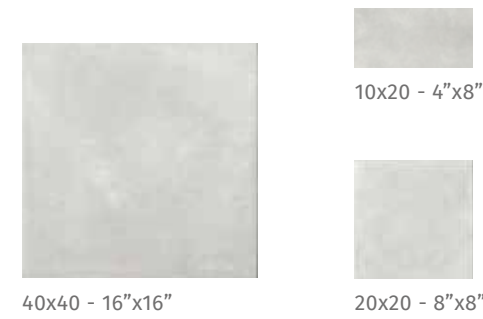
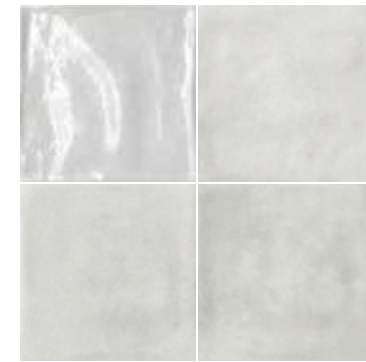


Spessore . Thickness . Épaisseur
 Stärke . Толщина . 10 mm

CLOUD WHITE



GREY VETIVER



Mosaici . Mosaics . Mosaïques . Mosaiken . Мозаика



Decori . Decors . Décors . Dekore . Декоры

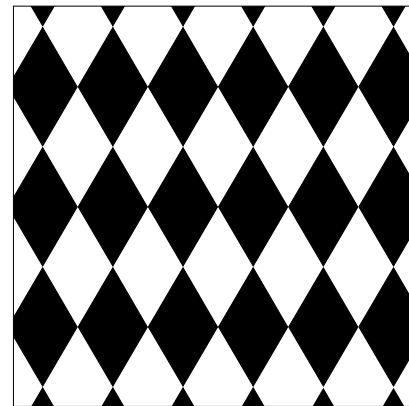


* Soggetti miscelati casualmente nelle scatole.
 Designs available with each box containing a random mix.
 Motifs mélangés au hasard dans les boîtes.
 Die Muster in den Schachteln werden nach den Zufallsprinzip gemischt.
 вариантов, в коробке упакована произвольная смесь из них.

L'ufficio stile consiglia stucchi colorati a complemento di "Materia Prima" per creare ambienti unici e personalizzati.
 The style department recommends colored grout as complement to "Materia Prima" to create unique and personalized environments.

SCHEMI DI POSA

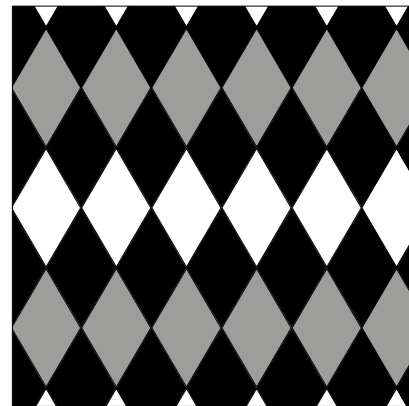
Laying sketch . Schémas de pose . Modulverlegungsbeispiele . Варианты Укладки



**MODULARE 1
ROMBO**
13,7x24 - 5 3/8" x 9 7/16"



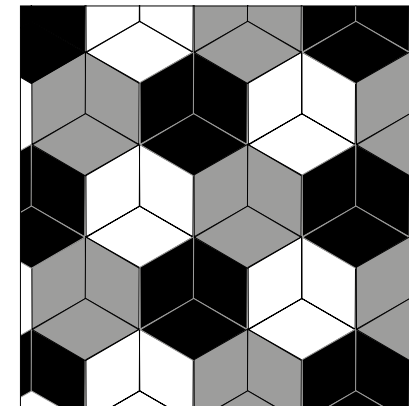
MODULO
rombo 1 50%
rombo 2 50%



**MODULARE 2
ROMBO**
13,7x24 - 5 3/8" x 9 7/16"



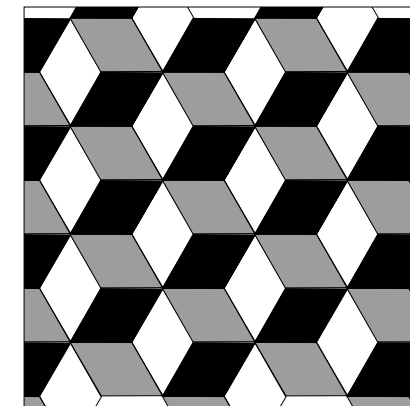
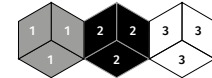
MODULO
rombo 1 25%
rombo 2 25%
rombo 3 50%



**MODULARE 7
ROMBO**
13,7x24 - 5 3/8" x 9 7/16"



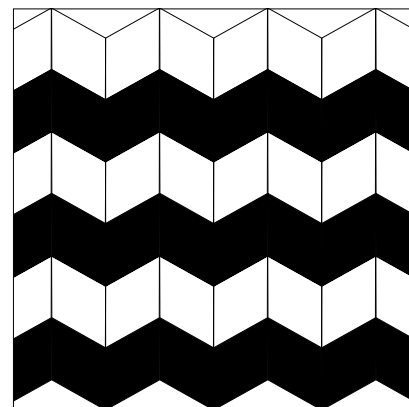
MODULO
rombo 1 33,3%
rombo 2 33,3%
rombo 3 33,4%



**MODULARE 8
ROMBO**
13,7x24 - 5 3/8" x 9 7/16"



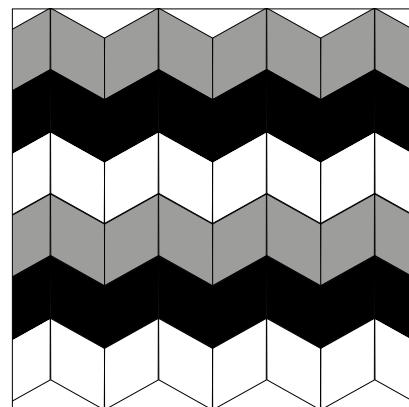
MODULO
rombo 1 33,3%
rombo 2 33,3%
rombo 3 33,4%



**MODULARE 3
ROMBO**
13,7x24 - 5 3/8" x 9 7/16"



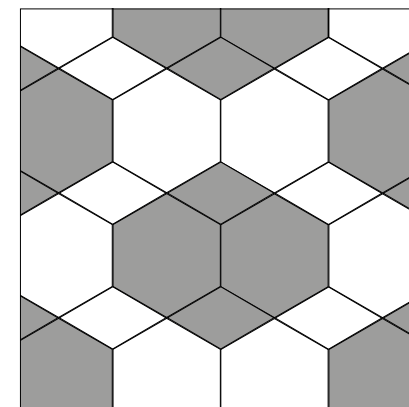
MODULO
rombo 1 50%
rombo 2 50%



**MODULARE 4
ROMBO**
13,7x24 - 5 3/8" x 9 7/16"



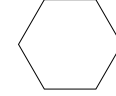
MODULO
rombo 1 33,3%
rombo 2 33,3%
rombo 3 33,4%



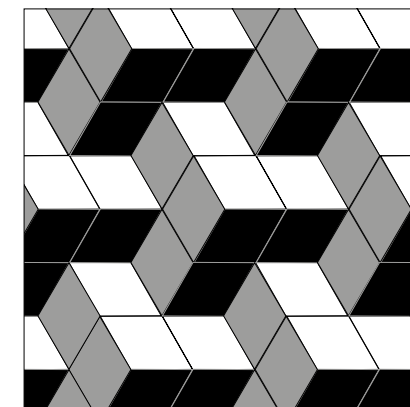
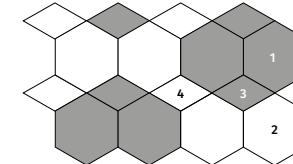
**MODULARE 9
ROMBO**
13,7x24 - 5 3/8" x 9 7/16"



ESAGONA
24x27,7 - 9 7/16" x 10 7/8"



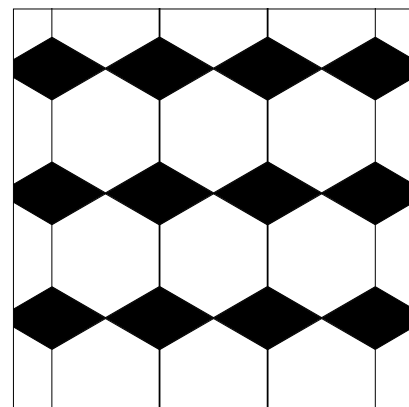
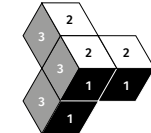
MODULO
esagona 1 37,54%
esagona 2 37,54%
rombo 3 12,46%
rombo 4 12,46%



**MODULARE 10
ROMBO**
13,7x24 - 5 3/8" x 9 7/16"



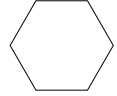
MODULO
rombo 1 33,3%
rombo 2 33,3%
rombo 3 33,4%



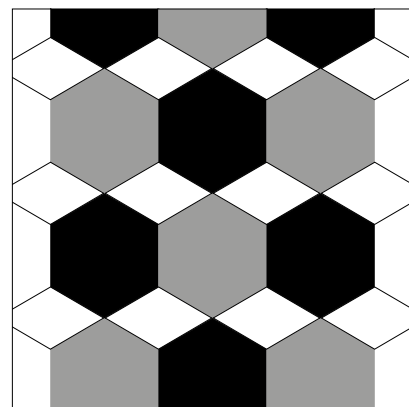
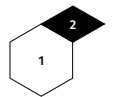
**MODULARE 5
ROMBO**
13,7x24 - 5 3/8" x 9 7/16"



ESAGONA
24x27,7 - 9 7/16" x 10 7/8"



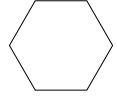
MODULO
esagona 1 75%
rombo 2 25%



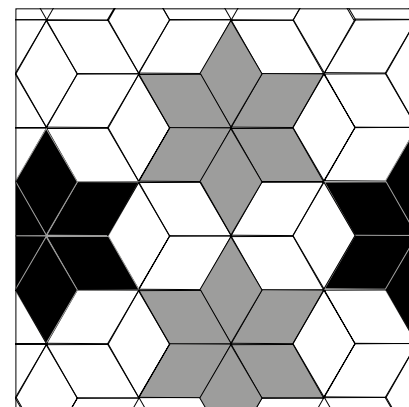
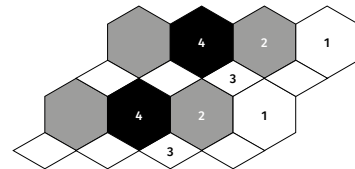
**MODULARE 6
ROMBO**
13,7x24 - 5 3/8" x 9 7/16"



ESAGONA
24x27,7 - 9 7/16" x 10 7/8"



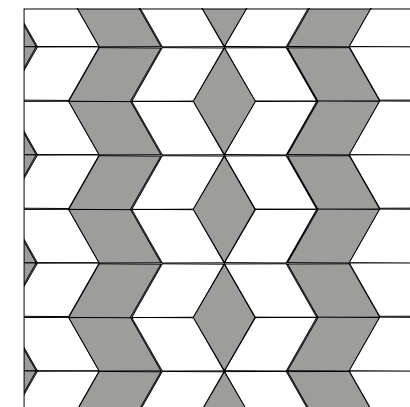
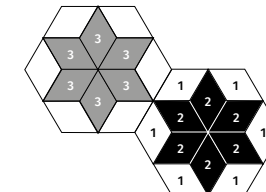
MODULO
esagona 1 18,70%
esagona 2 28,15%
rombo 3 25%
esagona 4 28,15%



**MODULARE 11
ROMBO**
13,7x24 - 5 3/8" x 9 7/16"



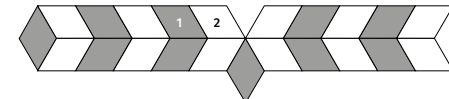
MODULO
rombo 1 50%
rombo 2 25%
rombo 3 25%



**MODULARE 12
ROMBO**
13,7x24 - 5 3/8" x 9 7/16"



MODULO
rombo 1 45,45%
rombo 2 54,55%



MATERIA PRIMA

Gres fine porcellanato smaltato
 Glazed Fine Porcelain Stoneware
 Grès Cérame Fin Émaillé
 Glasiertes Feinsteinzeug
 Глазурованный Керамогранит



Spessore . Thickness . Épaisseur
 Stärke . Толщина . 10 mm

Imballi . Packing . Emballage . Verpackung . Ynakobka

SIZES	BOX			PALLET		
	PZ	MQ	KG	BOX	MQ	KG
40x40 - 16"x16"	8	1,28	25,60	48	61,44	1.245
20x20 - 8"x8" / Inserto Rainbow	26	1,04	20,30	54	56,16	1.112
10x20 - 4"x8"	36	0,72	14,20	72	51,84	1.024
24x27,7 - 9 7/16"x10 7/8" Esagona	20	0,97	20,50	56	54,32	1.164
13,7x24 - 5 3/8"x 9 7/16" Rombo	60	0,97	20,50	56	54,32	1.164

NOTE TECNICHE - TECHNICAL NOTES - NOTES TECHNIQUES - TECHNISCHE ANMRKUNGEN - ТЕХНИЧЕСКИЕ ЗАМЕЧАНИЯ

Tutti i formati sono nominali. Cir si riserva la facoltà di modificare in qualunque momento le informazioni e le caratteristiche illustrate nel presente catalogo, che non sono comunque da ritenere legalmente vincolanti. I colori e le caratteristiche estetiche dei prodotti sono quanto più possibile vicini a quelli reali, nei limiti consentiti dai processi di stampa.

All sizes are nominal. Cir reserves the right to modify the information and the characteristics illustrated in this catalogue (which are in any case not legally binding) at any moment. The colours and appearance features of the products are as close as possible to reality, within the limitation of the printing process.

Tous les formats sont nominaux. Cir se réserve la faculté de modifier à tout moments les informations et les caractéristiques figurant dans le présent catalogue, lesquelles niengagent pas par le fabricant au plan légal. Les couleurs et les caractéristiques esthétiques sont fidèles aux couleurs et caractéristiques réelles dans les limites des procédés dimpression.

Alle Formate sind Nennwerte. Die Firma Cir behält sich vor, die in diesem Katalog enthaltenen Informationen und Eigenschaften jederzeit zu ändern; sie gelten auf keinen Fall als gesetzlich bindend. Die Farben und ästhetischen Eigenschaften der Produkte kommen innerhalb der Möglichkeiten der Druckverfahren den tatsächlichen Eigenschaften so weit wie möglich nahe.

Все форматы являются номинальными. Cir оставляет за собой изменять в любой момент данные и характеристики, приведенные в настоящем каталоге, которые в любом случае не считаются юридически обязательными. Цветовая окраска и эстетические характеристики изделий приближаются как можно больше к реальным, в пределах, допускаемых процессами печати.

CONSIGLI PER LA POSA - LAYING SUGGESTIONS - CONSEILS POUR LA POSE - VERLEGEHINWEISE - РЕКОМЕНДАЦИИ ПО УКЛАДКЕ

Stendere a terra alcuni metri (almeno 3 mq) per controllare l'effetto d'insieme. Posare il materiale attingendo da più scatole controllandone accuratamente calibro, tonalità e scelta. Nella posa è consigliabile lasciare una fuga tra le piastrelle monofornate di 3 mm. È comunque compito del progettista stabilire, in funzione della struttura e della destinazione d'uso del piano di calpestio, il corretto modo di applicazione delle piastrelle.

Lay some pieces of product (at least 3 sqm) to check the overall effect. Lay the material taking it from several boxes and carefully check its size accuracy, shade and material sorting. Suggested laying using grout with 3mm. However, the designers has to establish the correct way of application of the tiles depending on the structure and the foreseen utilization of the floor.

Appuyer sur le sol quelques pieds (au moins 3 mc) pour apprécier l'effet global. Poser le matériel en le prenant de plusieurs boîtes et en contrôlant l'épaisseur, les nuances et la qualité des différentes pièces. Dans la pose, il est à recommander un joint de laisser un écart entre les carreaux du même format de 3 mm. D'ailleurs c'est le concepteur qui doit établir, sur la base de la structure et de la destination d'emploi du plan de piétiement, le procédé d'application correct des carreaux.

Eine Quadratmeter (min. 3 qm) auf dem Boden legen, um die Gesamtwirkung nachzuprüfen. Wir empfehlen Fliesen aus mehreren Kartons zu verlegen, nach einer sorgfältigen Prüfung des Kalibers, des Farbtons und der Sortierung. Beim Verlegen schlagen wir eine Fuge von 3 mm beim gleichen Format. Es ist auf jeden Fall Aufgabe des Planers, nach der Struktur und dem Verwendungszweck der Tritfläche, die richtige Verlegeart der Fliesen zu bestimmen.

Разложить изделия на полу для проверки общего эффекта. Укладывать материал, тщательно проверяя калибр, тональность и сорт. При укладке плитки оставлять шов между плиткой одного формата 3 мм. моноформатной укладки, так и для укладки модулем.

CE

GRUPPO ROMANI S.P.A. INDUSTRIE CERAMICHE
 VIA A. VOLTA 9, 22125
 42013 CASALGRANDE (RE)
 05
 001CPR2013-07-01
 EN 14411:2012

Piastrelle di ceramica pressate a secco, con assorbimento di acqua E_s ≤ 0,5%, per pavimentazioni interne ed esterne.
 Dry pressed ceramic tile, with water absorption E_s ≤ 0,5%, for internal and external floorings.



© Copyright 2020 Gruppo Romani S.p.A. Industrie Ceramiche
Gruppo Romani S.p.A. Industrie Ceramiche
 www.grupporomanispa.com



Gres Fine Porcellanato Smaltato Cir - ISO 13006 Bla GL . Blb GL
 Glazed Fine Porcelain Stoneware Cir - ISO 13006 Bla GL . Blb GL | Grès Cérame Fin Émaillé Cir - ISO 13006 Bla GL . Blb GL
 Glasiertes Feinsteinzeug Cir - ISO 13006 Bla GL . Blb GL | Глазурованный Керамогранит Cir - Iso 13006 Bla Gl . Blb Gl.

	Proprietà fisico-chimiche Physical chemical properties / Propriétés physico chimiques Physisch chemische Eigenschaften / Физико химические свойства	Metodo di prova Standard of test / Norme du test Testnorm / Метод испытаня	Materia Prima
	Dimensioni Dimensions Dimensions Abmessungen Размеры		
	Aspetto superficiale Surface appearance Aspect superficiel Oberflächenbeschaffenheit Вид поверхности		≥ 95%
	Lunghezza e larghezza Length and width Longueur et largeur Länge und Breite Длина и ширина	W 10 test	± 0,5% ± 2 mm ± 0,5% ± 2 mm
	Spessore Thickness Épaisseur Stärke Толщина	ISO 10545 - 2	± 5% ± 0,5 mm
	Rettilineità degli spigoli Straightness of sides Rectitude des arêtes Kantengeradheit Прямолинейность кромок		± 0,3% ± 1,5 mm
	Ortogonalità Rectangularity Orthogonalité Rechtwinkligkeit Ортогональность		± 0,3% ± 1,5 mm
	Planarità Surface flatness Planéité Ebenflächigkeit Плоскостность	ISO 10545-2 ASTM C 485	± 0,3% ± 1,5 mm Warpage diagonal edge ± 0,4%
	Variazioni di tono Shade variations Variations de nuance Tonvariationen Степень разнотонности		
	Assorbimento d'acqua Water absorption Absorption d'eau Wasseraufnahme Водопоглощение	ISO 10545 - 3	E ≤ 0,1% Bla GL
	Resistenza al gelo Frost resistance Résistance au gel Frostbeständigkeit Морозостойкость	ISO 10545 - 12	Ingelivo Fröst proof Ingeliv Fröstlicher Морозостойкость
	Coefficiente di dilatazione termica lineare (50°/400°) Linear thermal expansion coefficient (50°/400°) Dilatation thermique linéaire (50°/400°) Lineare Wärmeausdehnung (50°/400°) Кэффициент линейного теплового расширения	ISO 10545 - 8	Metodo disponibile Test method available Méthode disponible Verfügbares Verfahren Имеющийся Метод
	Resistenza agli sbalzi termici Resistance to thermal shock Résistance aux écarts de température Temperaturwechselbeständigkeit Стойкость к тепловым перепадам	ISO 10545 - 9	Resistente Resistant Résistant Widerstandsfähig Устойчивый
	Resistenza al cavillo di piastrelle smaltate Crazing resistance of glazed tiles Résistance à la fissuration des carreaux émaillés Haarrißbeständigkeit der glasierten Fliesen Стойкость глазурованной плитки к кракелюру	ISO 10545 - 11	Resistente Resistant Résistant Widerstandsfähig Устойчивый
	Resistenza della superficie (scala MOHS) Scratch hardness (MOHS scale) Dureté de la surface (échelle MOHS) Oberflächenhärte (MOHS skala) Поверхностная прочность по шкале Мооса	EN 101	MOHS > 6
	Resistenza alla abrasione della superficie di piastrelle smaltate Resistance to surface abrasion of glazed tiles Résistance à l'abrasion de la surface des carreaux émaillés Widerstand gegen Abrieb der Oberfläche der glasierten Fliesen Стойкость глазурованной плитки к поверхностному истиранию	ISO 10545 - 7	Classe 3-4 Class 3-4 Classe 3-4 Gruppe 3-4 Класс 3-4
	Resistenza ai prodotti chimici di uso domestico Resistance to household chemicals Résistance aux produits chimiques ménagers Widerstand gegen Haushaltsreiniger Стойкость к бытовым химикатам	ISO 10545 - 13	Classe A Class A Classe A Gruppe A Класс A
	Resistenza agli acidi e alle basi a bassa concentrazione Resistance to low concentrations of acids and bases Résistance aux acides et aux bases à faible concentration Widerstand gegen schwach konzentrierten Säuren und Laugen Стойкость к низкоконцентрированным кислотам и щелочам		Classe LA Class LA Classe LA Gruppe LA Класс LA
	Resistenza alle macchie di piastrelle smaltate Resistance to stains of glazed tiles Résistance aux taches des carreaux émaillés Widerstand gegen Fleckenbildner der glasierten Fliesen Стойкость глазурованной плитки к образованию пятен	ISO 10545 - 14	Classe 5 Class 5 Classe 5 Gruppe 5 Класс 5
	Resistenza alla flessione Bending strength Résistance à la flexion Biegezugfestigkeit Прочность на изгиб	Modulo di rottura - Modulus of rupture Module de rupture - Bruchmodul - Модуль жесткости Carico di rottura - Breaking of rupture Charge de rupture - Bruchkraft - Наррузка	ISO 10545 - 4 R ≥ 35 N/mm² S ≥ 1300 N

DAL 1967

CIR - MANIFATTURE CERAMICHE

www.cir.it

Via A. Volta 23/25 - 42013 Casalgrande (RE) Italy

Tel. +39-0522-998911 - Fax Italy +39-0522-998910 - Fax Export +39-0522-998930

