

Collections

DECORATORI®
BASSANESI

ITALIA ■ 1988

**IT La bellezza del processo creativo:
dall'idea alla forma.**

La decorazione è un universo affascinante che esploriamo con curiosità e passione per proposte inedite e ricercate. Produrre una superficie significa per noi elaborare un'idea, un pensiero nuovo, trovare chiavi di lettura contemporanee per dare vita a prodotti che durino nel tempo, capaci sempre di distinguersi per qualità dei materiali e attenzione al dettaglio.

Lavoriamo al design e alla realizzazione di nuovi materiali in modo diretto e sincero, a partire dalla funzione d'uso cui il prodotto è destinato, per arrivare al cuore del pensiero creativo e dare forma a nuove sensazioni visive e tattili.

La ricerca, lo studio e la sperimentazione si arricchiscono grazie alla collaborazione con alcune delle figure più interessanti nel panorama della decorazione di interni e del design internazionale.

La sensibilità di ogni designer, le esigenze dei progettisti, le tecnologie applicabili e le destinazioni d'uso, aprono di volta in volta nuovi scenari.

La realizzazione di una nuova collezione prende forma, come a partire da un foglio bianco sul quale creare una nuova composizione, per dare vita ad un unico e sempre, per noi, sorprendente risultato.

**EN The beauty of the creative process:
from idea to form.**

Home decor is a fascinating world, that we explore with curiosity and passion in creating our unusual and sought-after styles. For us, creating a surface means developing an idea, something new and original. It means finding a modern interpretation of timeless products, bringing them to life with such high-quality materials and attention to detail that they will always stand out.

We design and create our materials in a straightforward and honest manner, beginning with the functional use of the product in mind, in order to get to the heart of the creative process and give shape to new visual and tactile sensations.

Our research, study and experimentation are all enriched by our collaboration with some of the most fascinating players on the international stage of interior decor and design. The sensibilities of the designers, the needs of the architects, the applicable technologies and the eventual end use of the product can open doors to new paradigms and ideas. The creation of a new collection takes shape like a painting on a blank canvas, bringing unique results to life that, for us, are always a happy surprise.

Indice generale

Catalogue index

Indice delle collezioni

Collection index

DECORATORI®
BASSANESI
ITALIA 1988

Designers	06
Spaces	12
Moodboards	129
Technical	140

Collezione Collection	Designer Author	Anno Year	Pagina Page
Segments	Guglielmo Poletti	2018	14
Tartan	Sebastian Herkner	2018	36
Linea	Lex Pott	2016	58
Bonbon	Paola Navone	2015	68
Imprint	Alissa + Nienke	2016	78
Vedononvedo	Paola Navone	2016	90
Trax	DB Studio	2016	98
Seeds	DB Studio	2016	108
Luci di Venezia	DB Studio	2015	118

Designers



Paola Navone

Italy

Clients:

Abet Laminati, Alessi, Armani Casa, Baxter, Cappellini, Triade, Gervasoni, Habitat, Knoll, Poltrona Frau

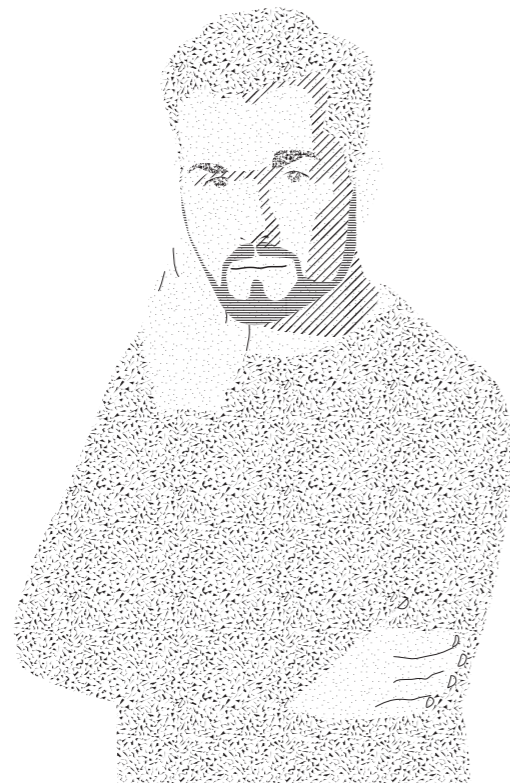
Collections:

Bonbon, Vedononvedo

Bio:

^{IT} Schietta, sognatrice, eclettica: nella sua anima convivono sapori e colori del sud del mondo, conosciuto, amato, frequentato, unite al gusto e alle forme dell'Occidente ricco di tradizioni, aperto, in movimento. Da tutto ciò, la sua inesauribile curiosità alla ricerca di materie, forme e strutture, al presente, passato e futuro. È architetto, designer, art director, interior designer. Moltissime le mostre e gli allestimenti curati in tutto il mondo. Nell '83 vince l'International Design Award di Osaka, nel 2000 è Designer dell'anno per la rivista tedesca Architektur & Wohnen e nel 2011 vince con 2 progetti l'Elle Deco International Design Awards. Nel 2014 riceve dalla rivista Interior Design Magazine la prestigiosa nomina a far parte della Hall of Fame del Design. Vanta collaborazioni con le firme più illustri dello scenario internazionale del mondo del design come Branzi, Sottsass, Mendini.

^{EN} An open and eclectic dreamer: the flavours and colours of the global South that she knows and loves live in her mind and soul, in harmony with the taste and forms of the Western world and its rich traditions – open and in motion. All of this is the basis for the unquenchable curiosity of her constant search for materials, forms and structures, in the past, present and future. She is an architect, designer, art director and interior decorator. She has curated numerous exhibitions and shows throughout the world: in 1983 she won the International Design Award in Osaka, and in 2000 she was named Designer of the Year by the German magazine, Architektur & Wohnen. In 2011 two of her projects won the Elle Deco International Design Awards, and in 2014 she was nominated to the prestigious Design Hall of Fame by Interior Design Magazine. She has worked with some of the most famous design companies on the international scene, including Branzi, Sottsass and Mendini.



Sebastian Herkner

Germany

Clients:

Cappellini, ClassiCon, Dedon, Fontana Arte, Moroso, Pulpo, Thonet and Wittmann

Collections:

Tartan

Bio:

^{IT} Sebastian Herkner è nato nel 1981 a Bad Mergentheim, Germania. Ha studiato design all'Università di Offenbach Am Main (Università di arte e design). Durante i suoi studi si focalizza sul design di oggetti e mobili, unendo vari contesti culturali e combinando nuove tecnologie con l'artigianato tradizionale in modo da sottolineare la bellezza sfaccettata dei materiali e riportare ad una rinnovata attenzione ai piccoli dettagli. Ancora studente, Herkner fece uno stage con Stella McCartney a Londra, che lo aiutò a concentrarsi sui materiali, colori, strutture e texture. Dal momento della fondazione del suo studio di design a Offenbach am Main nel 2006, ha ideato prodotti per aziende come Cappellini, ClassiCon, Dedon, Fontana Arte, Moroso, Pulpo, Thonet e Wittmann, e ha lavorato in progetti di interior design, per mostre e musei. Dal 2007 ha tenuto vari corsi all'Università di Offenbach am Main come relatore esterno. I suoi progetti hanno ricevuto molteplici premi, come nel 2011 il premio German Design nella categoria novità, nel 2015 il premio EDIDA come miglior novità internazionale e come Ospite d'Onore a Imm Cologne nel 2016.

^{EN} Sebastian Herkner was born in 1981 in Bad Mergentheim, Germany. He studied product design at the Offenbach University of Art and Design, and his focus from the beginning was on designing objects and furniture, blending various cultural contexts and combining new technologies with traditional craftsmanship in order to highlight the multifaceted beauty of the materials and draw renewed attention to small details.

While still a student, Herkner interned with Stella McCartney in London, which helped to hone his sensitivity for materials, colours, structures and textures. Since founding his own design studio in Offenbach am Main in 2006, he has designed products for manufacturers including Cappellini, ClassiCon, Dedon, Fontana Arte, Moroso, Pulpo, Thonet and Wittmann, as well as working on interior design projects for exhibitions and museums. Since 2007 he has taught several courses at HfG Offenbach am Main as a visiting lecturer. His designs have received multiple prizes, for example the 2011 German Design Award in the Newcomer category and 2015's EDIDA Award for Best International Newcomer, and was named Guest of Honour at IMM Cologne 2016.



Guglielmo Poletti

Italy

Clients:

Spazio Rossana Orlandi, Seeds London Gallery, Desalto

Collections:

Segments



Alissa + Nienke

The Netherlands

Clients:

Fendi, Dior, Mojo, Buxhin, TU Eindhoven, Dutch Invertuals, Spazio Rossana Orlandi, Frame Magazine

Collections:

Imprint

Bio:

^{IT} Guglielmo Poletti (nato nel 1987) è un designer italiano, che al momento vive a Eindhoven, in Olanda. Dopo i primi studi a Milano, ha ottenuto un master in Design Contestuale all'Accademia del Design di Eindhoven, dove si laureò a giugno 2016. Fin dall'inizio Poletti sviluppò un modo di esprimersi semplice ma personale. La sua pratica è fortemente radicata nell'investigazione dei materiali e dei loro limiti, in relazione alle nozioni di equilibrio e fragilità. Le sue semplici ed elementari costruzioni sono metafora di una complessità vinta, costruita intorno alla manipolazione di dettagli non convenzionali. I piccoli gesti gli permettono di ottenere un profondo impatto, decostruendo un'immagine e restaurandola con piccoli interventi. Il suo approccio è basato su una filosofia "thinking by doing", che lui combina con intuizione, per produrre dei risultati estremamente coerenti. Le opere di Poletti sono state esibite in diverse mostre internazionali, come la Design Week olandese, la design Week di Milano e la fiera londinese PAD con Galleria Rossana Orlandi, e Operæ PHM|Piemonte Handmade con Seeds London Gallery. A gennaio 2018 è stato selezionato tra 6 giovani designer vincitori del premio italiano "Rising Talent Awards" (talenti nascenti) a Maison&Objet a Parigi.

^{EN} Netherlands. After early studies in Milan, he earned an MA in Contextual Design from the Design Academy of Eindhoven, graduating in June 2016. Since the very beginning Poletti developed a simple yet personal language. His practice is deeply rooted in a hands-on investigation of materials and their limits, in relation to concepts of balance and fragility. His simple structures and elemental constructions stand as metaphors of defeated complexity, built around the manipulation of unconventional details. Subtle gestures allow him to achieve a deeper impact, by deconstructing an image and then restoring it with the smallest of operations. His approach is based on a 'thinking by doing' philosophy, which he combines with a good deal of intuition, to produce extremely coherent results. Poletti's work has been shown in several international exhibitions, such as Dutch Design Week, Milan Design Week and PAD London Fair with Galleria Rossana Orlandi, and Operæ PHM | Piemonte Handmade with SEEDS London Gallery. In January 2018 he was one of the six young designers who were named winners of the Italian 'Rising Talent Awards' at MAISON&OBJET in Paris.

Bio:

^{IT} Alissa + Nienke è uno studio di design e ricerca dei materiali con una personale interpretazione del design di superficie fondato da Alissa van Asseldonk e Nienke Bongers (Eindhoven, NL). Combinando un'ampia sperimentazione dei materiali col semplice obiettivo di porre l'esperienza umana al centro del loro lavoro, progettano materiali, oggetti e installazioni che stimolano curiosità e interazione. Questo significa ricercare la percezione umana, creare nuovi materiali per migliorare la qualità della vita ed esplorare come ci apparirà l'ambiente in futuro. Influenzato dall'educazione ricevuta presso la Design Academie di Eindhoven e dall'esperienza fatta sia nell'ambito dell'artigianato che con l'utilizzo delle tecnologie, il loro lavoro è caratterizzato da aspetti tattili, dalla semplicità e dalle forze naturali come il vento o la luce. Alissa e Nienke hanno aperto il loro studio nel 2013 e lavorano a progetti propri o commissionati da clienti. Hanno collaborato con Fendi, Dior, Mojo, Buxhin, TU Eindhoven, Dutch Invertuals, Spazio Rossana Orlandi, Frame Magazine e molti altri.

^{EN} Alissa + Nienke, founded by Alissa van Asseldonk and Nienke Bongers (Eindhoven, NL), is a material research and design studio with a unique interpretation of surface design. Combining extensive material experimentation with a simple mission to put human experience at the centre of their work, they design materials, objects and installations that trigger curiosity and interaction. This means researching human perception, creating new materials to improve daily life and exploring what our future environments will look like. Influenced by their concept-led education at the Design Academy Eindhoven and their practical experience of working with both traditional artisans and new technologies, their work is characterised by tactility, simplicity and the use of natural forces like wind or light. Alissa and Nienke founded their design studio in 2013, and are working on commissioned and self-initiated projects in the field of interior design and architecture. They have collaborated with Fendi, Dior, Mojo, Buxkin, TU Eindhoven, Dutch Invertuals, Spazio Rossana Orlandi, Frame Magazine and many others.



Lex Pott

The Netherlands

Clients:

Abet Laminati, Hay,
Nomess Copenhagen, Transnatural

Collections:

Linea

Bio:

EN Designer trentenne, Lex Pott utilizza un metodo intuitivo e grezzo. Nel suo lavoro ritorna alle origini dei materiali che utilizza di più: legno, pietra e metallo. Pott vive ad Amsterdam e lavora nel suo studio in un vecchio cantiere navale sul NDSM-Terrein, una delle ultime periferie di Amsterdam. Il giovane designer si è diplomato con lode nel 2009 alla design Academy di Eindhoven. Nei suoi progetti si possono sempre individuare i materiali utilizzati, sotto che tipo di circostanze e con quali tecniche sono stati prodotti. Tra le sue collaborazioni: Hella Jongerius, Scholten and Baijings.

EN 30-year-old designer Lex Pott employs a raw and intuitive method. In his work, he returns to the origins of the materials he uses most: wood, stone and metal. Pott is based in Amsterdam and works from his studio in an old shipyard in the NDSM-Terrein, one of the farthest outskirts of the city. The young designer graduated cum laude in 2009 from the Design Academy Eindhoven. In his work, the materials used, the conditions under which the pieces were constructed and the techniques employed are always clearly identifiable. Among those he has worked with are Hella Jongerius, Scholten and Baijings.



DB Studio

Italy

Collections:

Trax, Seeds, Luci di Venezia

Bio:

EN DB Studio (Decoratori Bassanesi Studio) corrisponde al gruppo interno di ricerca e sviluppo di Decoratori Bassanesi: oltre a coordinare tutte le ricerche in fase di laboratorio, progetta esso stesso alcune delle collezioni, nella fattispecie Trax, Seeds e Luci di Venezia. Si tratta di un gruppo "aperto" e sempre pronto a collaborazioni con color designer, decoratori, progettisti. DB Studio porta costantemente avanti una ricerca interna al marchio che arricchisce e completa le collaborazioni con i decoratori e i designers che di anno in anno selezioniamo per progettare le nuove collezioni.

EN DB Studio (Decoratori Bassanesi Studio) is the internal R&D group of Decoratori Bassanesi. In addition to coordinating the workshop stage of all research projects, the group also designs some of the studio's collections (in this volume, Trax, Seeds and Luci di Venezia.) It is an "open" group, always ready to collaborate with colour designers and interior decorators. DB Studio is constantly hard at work on internal brand research to enrich and expand their collaborations with the decorators and designers selected throughout the years to design new collections.

Ambienti

Spaces

DECORATORI®
BASSANESI
ITALIA 1988

II Un alfabeto per comporre infiniti racconti

Le singole collezioni sono pensate perché possano comunicare tra loro, creare relazioni trasversali potenti e comporre veri e propri moodboards di ambienti.

Un alfabeto di geometrie, forme e colori che consente sempre nuove combinazioni. Gli abbinamenti e le interazioni rendono possibile la massima personalizzazione, rispondendo così all'unicità di ogni luogo e di ogni committente.

EN An alphabet for telling infinite stories

Each individual collection is designed so that it can communicate with the others, create strong transversal relationships and compose true moodboards for every space. A lexicon of shapes, forms and colours that always allows for new combinations. The pairings and interactions make customisation easy, in order to meet the needs of every space and every client.

Ambiente Space	Collezione focus Focus collection	Colore Colour	Altre collezioni Other collections	Pagina Page
Segments 01	Segments	Coal	Trax Soft Slate	16
Segments 02	Segments	Bone	Seeds Chalk	22
Segments 03	Segments	Ice	Seeds Stone Grey	30
Tartan 01	Tartan	Rust	Trax Hard Cotton	38
Tartan 02	Tartan	Water/White	Bonbon White	46
Tartan 03	Tartan	Grey/White	Trax Soft Ash	52
Linea 01	Linea	Cinnamon/Blue	—	60
Bonbon 01	Bonbon	Aquamarine	Trax Soft Cotton	70
Imprint 01	Imprint	Pink/Silver	Seeds Chalk	80
Vedononvedo 01	Vedononvedo	—	Seeds Dust	92
—	Trax	—	—	100
—	Seeds	—	—	110
Luci di Venezia 01	Luci di Venezia	White	—	120

Segments

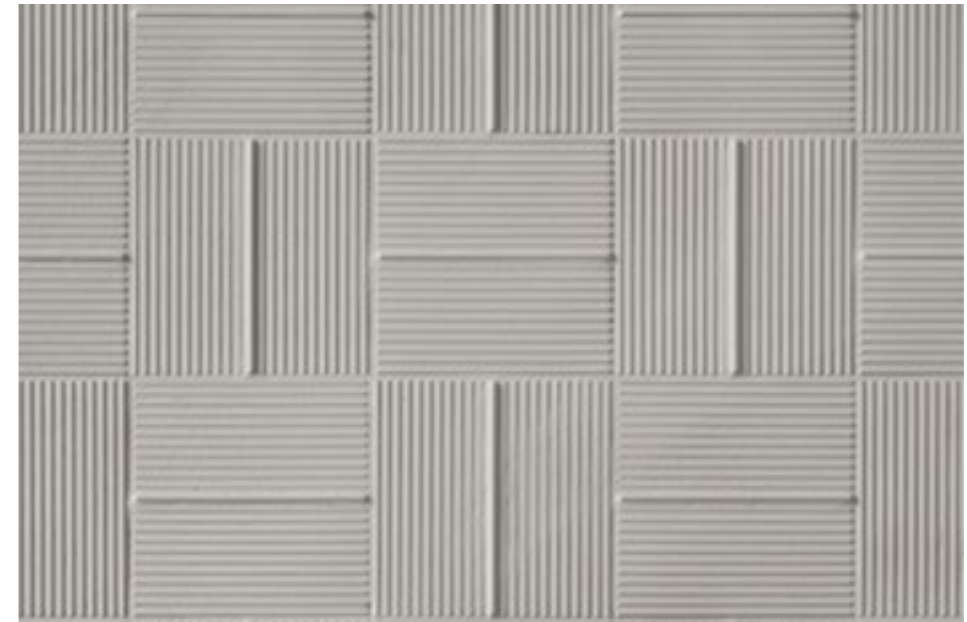
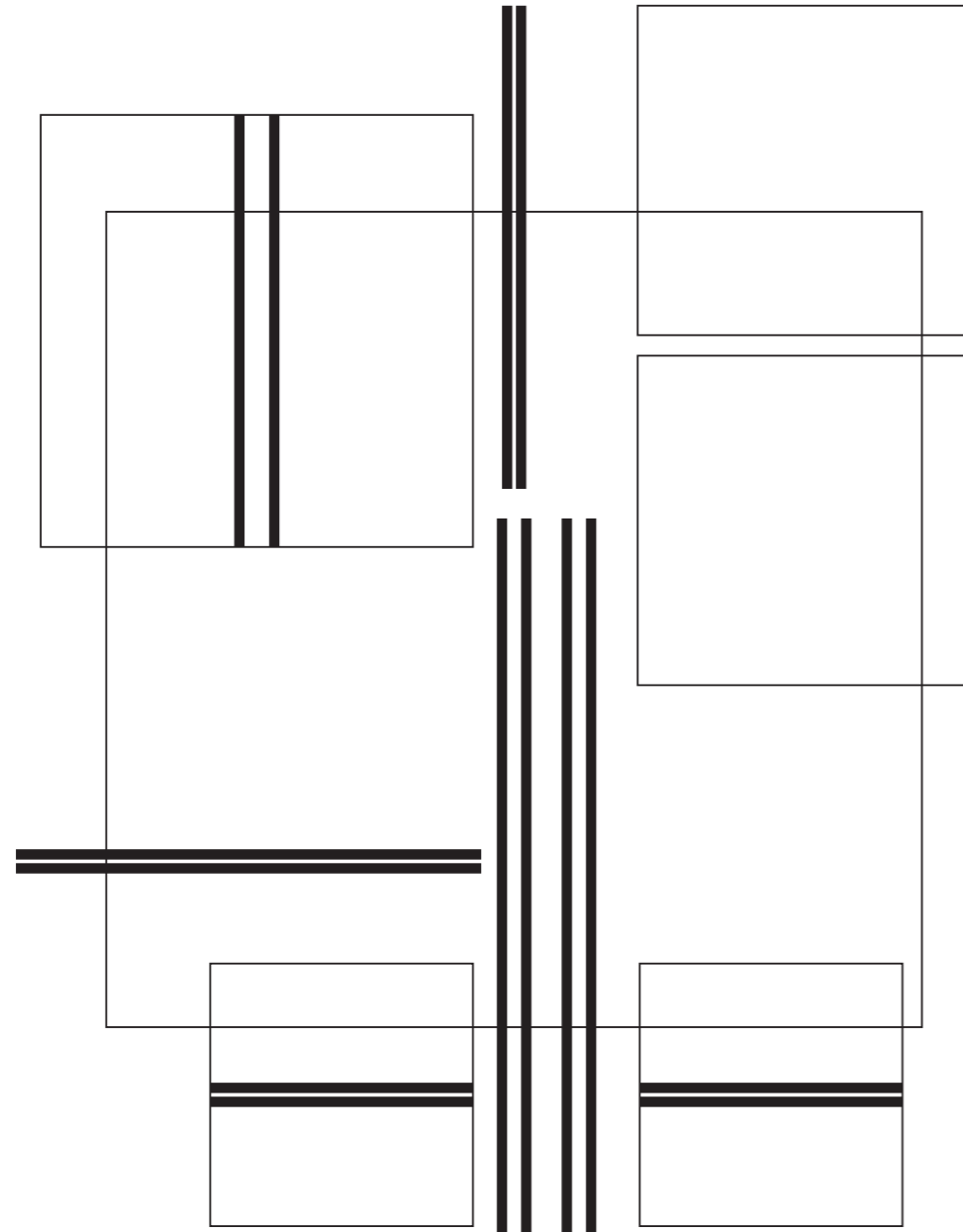
Design:
Guglielmo Poletti

Anno:
2018

Destra:
Segments Small Plus Ice / Small Coal,
dettaglio della superficie

Year:
2018

Right:
Segments Small Plus Ice / Small Coal,
surface detail







▮ Un semplice segno che nella sua ripetizione diventa di grande impatto visivo. L'elemento grafico, dal forte richiamo tattile, riveste con classe gli interni, con un rigore formale che regala suggestioni inedite. La maestria di Guglielmo Poletti ha saputo disegnare una collezione di grande fascino.

▮ A simple line whose many repetitions add up to strong visual impact. The graphic element, with its strong tactile suggestions, wraps a space in elegance; its stark formality evokes unexpected sensations. Guglielmo Poletti is the master designer behind this fascinating collection.







Un disegno dal carattere minimale che diviene decorazione raffinata, grazie anche alle diverse possibili configurazioni e alle varianti di prodotto: Segments Small Plus, dove il segno si moltiplica, Segments Large, dove il segno si allunga in segmenti indipendenti.

A pattern of minimalist character becomes refined decor, thanks to its many possible configurations and the variations in the product itself: Segments Small Plus, where the lines multiply; and Segments Large, where the lines extend in independent sections.





Segments | 03

▣ **Collezione focus:**
Segments Small/Small Plus Ice

▣ **Altre collezioni:**
Seeds Stone Grey

EN **Focus Collection:**
Segments Small/Small Plus Ice

EN **Other Collections:**
Seeds Stone Grey



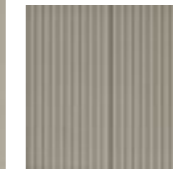




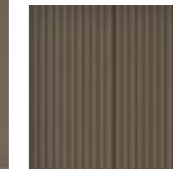
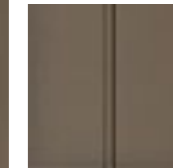
Bone



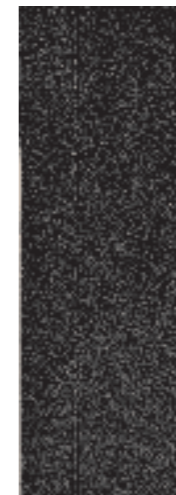
Ice



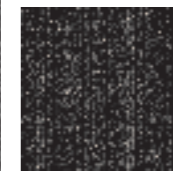
Dove



Iron



Coal

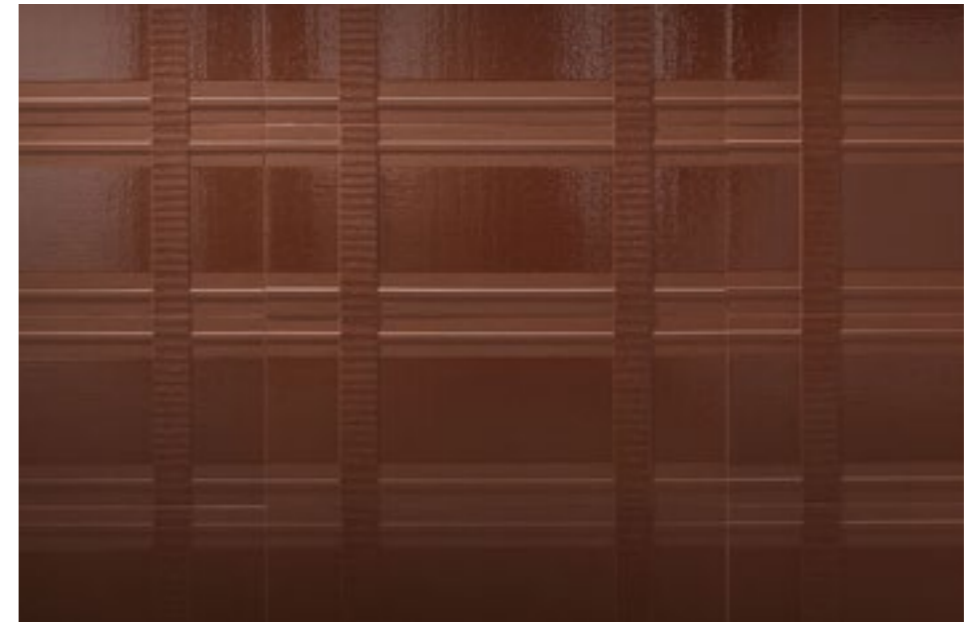
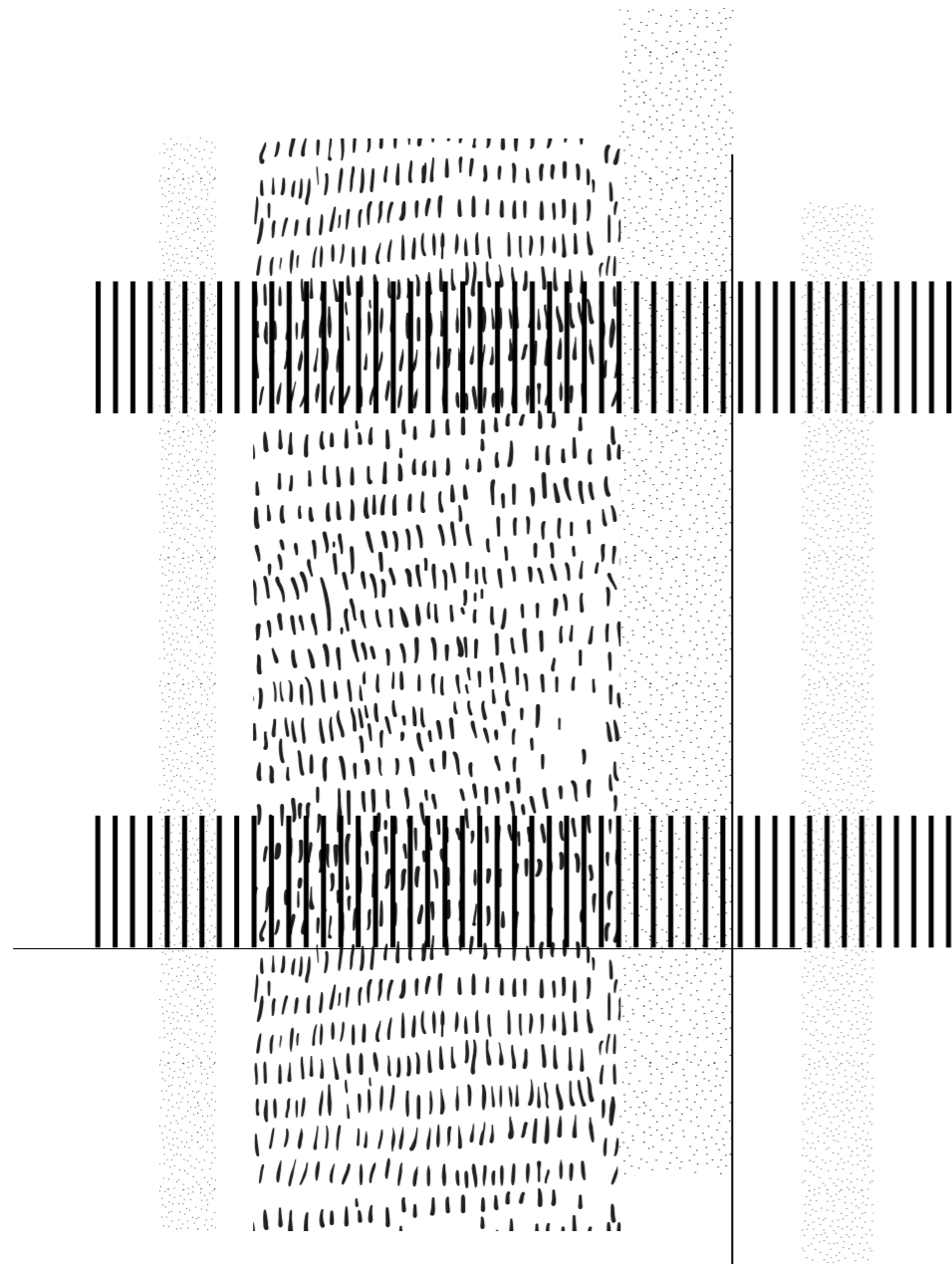


Tartan

Design:
Sebastian Herkner

Anno:
2018
Destra:
Tartan Rust / White,
dettaglio della superficie

EN Year:
2018
Right:
Tartan Rust / White,
surface detail



Tartan | 01

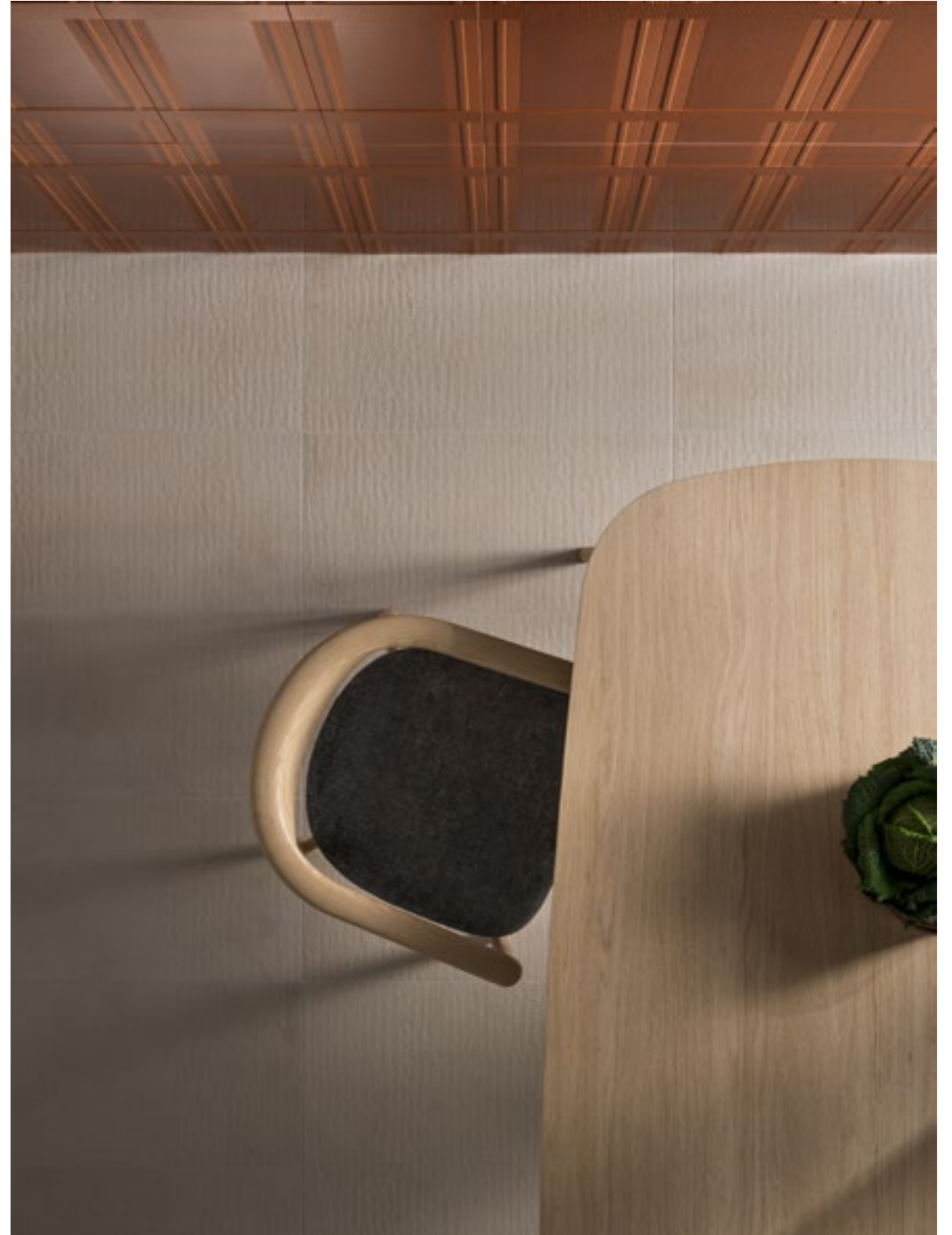
▣ **Collezione focus:**
Tartan Rust

▣ **Altre collezioni:**
Trax Hard Cotton

EN **Focus Collection:**
Tartan Rust

EN **Other Collections:**
Trax Hard Cotton





□ Una nuova geometria di piani orizzontali e verticali che riesce a farsi morbida come tessuto, dando forma a trame raffinate. Tradizione sartoriale e modernità si intrecciano in questa innovativa collezione disegnata da Sebastian Herkner, che spinge la decorazione oltre i suoi limiti, creando nuove, affascinanti sensazioni tattili.

□ A new geometry of vertical and horizontal planes manages to become as soft as cloth, and a refined weave and weft takes shape. Sartorial tradition is intertwined with modernity in this innovative collection designed by Sebastian Herkner, an artist who pushes home decor past its limits to create fascinating new tactile sensations.









□ Tartan veste le pareti con l'eleganza di un abito su misura. La stratificazione di smalti, la diversità di spessori e l'intreccio delle linee crea profondità e ritmo. Nella scelta di accordi cromatici o nel sofisticato tinta unita riesce ad essere versatile, arricchendo lo stile di ogni ambientazione.

EN Tartan drapes your walls in the elegance of a tailored suit. The overlap of finishes and the varying thicknesses and intersections of lines create depth and rhythm. Whether you choose a harmonious colour palette or the sophistication of a monochrome approach, it is always versatile, enriching the style of every space.



Tartan | 03

▣ **Collezione focus:**
Tartan Grey/White

▣ **Altre collezioni:**
Trax Soft Ash

EN **Focus Collection:**
Tartan Grey/White

EN **Other Collections:**
Trax Soft Ash







White



Grey



Water



Rust



Black

Linea

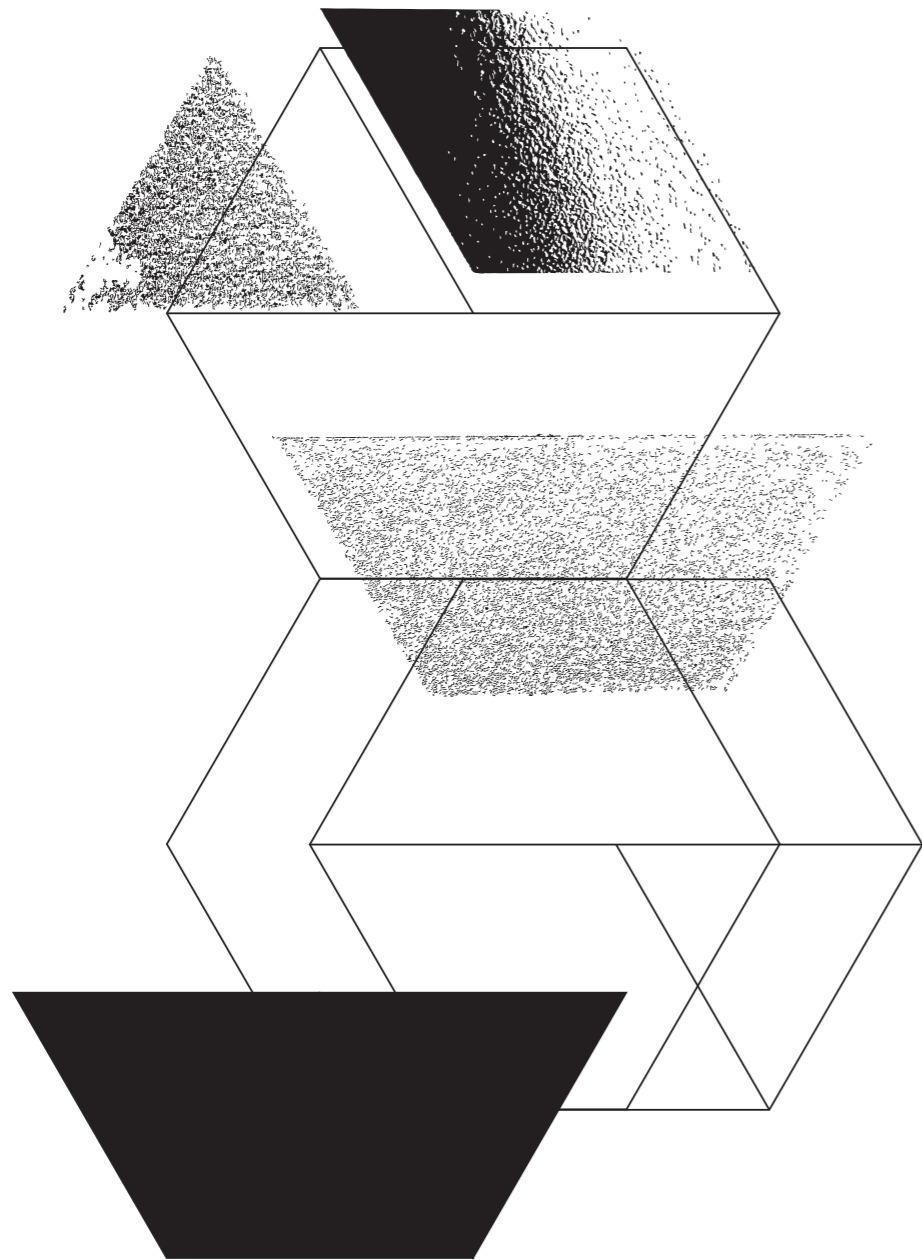
Design:
Lex Pott

IT Anno:
2016

Destra:
Linea Blue | Denim | Platinum | Brunito /
Pink | Cinnamon | Copper | Brass
dettaglio della superficie

EN Year:
2016

Right:
Linea Blue | Denim | Platinum | Brunito /
Pink | Cinnamon | Copper | Brass
surface detail

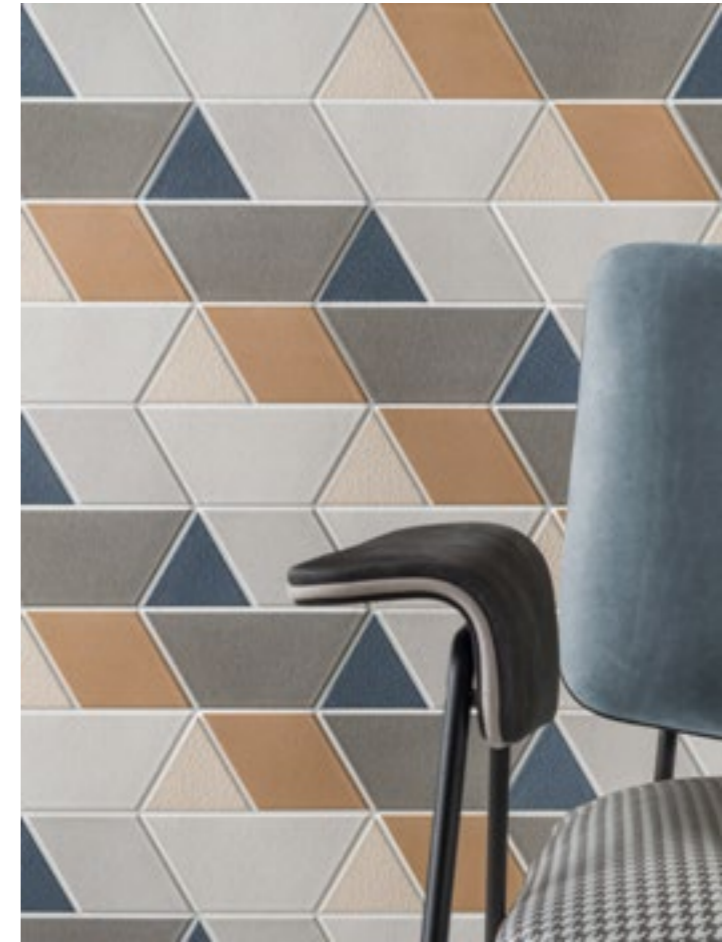


Linea | 01

▣ **Collezione focus:**
Linea Cinnamon + Blue

EN **Focus Collection:**
Linea Cinnamon + Blue





□ Moderna ed eclettica, la collezione firmata dal designer Lex Pott, porta con sé il sapore del passato e coniuga così i linguaggi moderni con un richiamo alla tradizione. Linea consente infinite combinazioni di colori e geometrie, per risultati unici ed interni personalizzati. La creatività può esprimersi ai massimi livelli anche grazie agli accostamenti con le altre collezioni.

EN Modern and eclectic, this collection from designer Lex Pott brings a retro flavour to a modern visual language. The Linea collection works with infinite combinations of colours and shapes, for unique results and customizable interiors. Its easy pairing with other collections means you can express your creativity to its utmost.



IT Collezione focus:
Linea Brunito + Platinum
+ Denim + Blue

EN Focus Collection:
Linea Brunito + Platinum
+ Denim + Blue



Cinnamon



Pink



Brass + Copper
+ Cinnamon + Pink



Denim



Blue



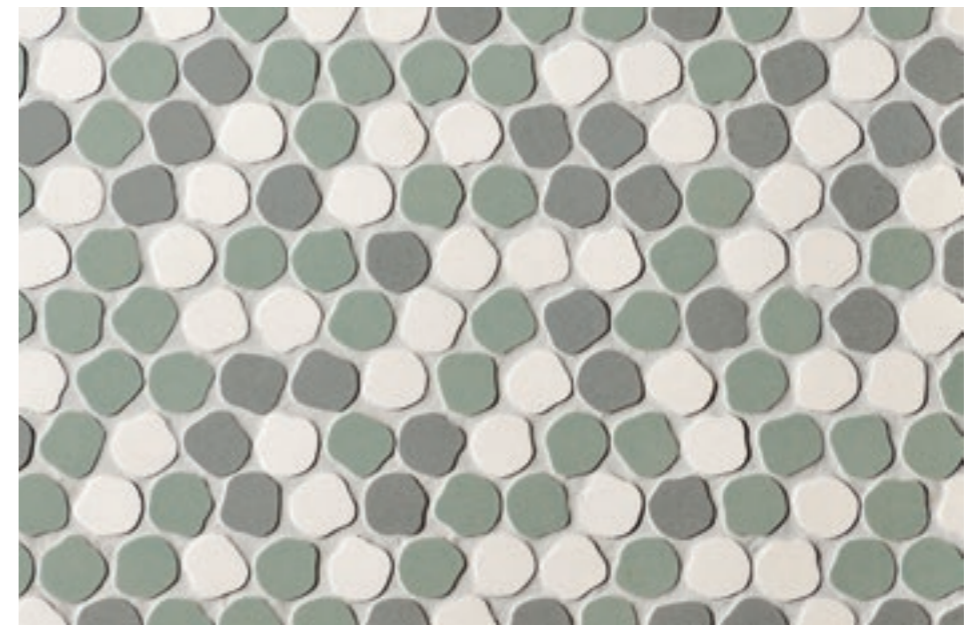
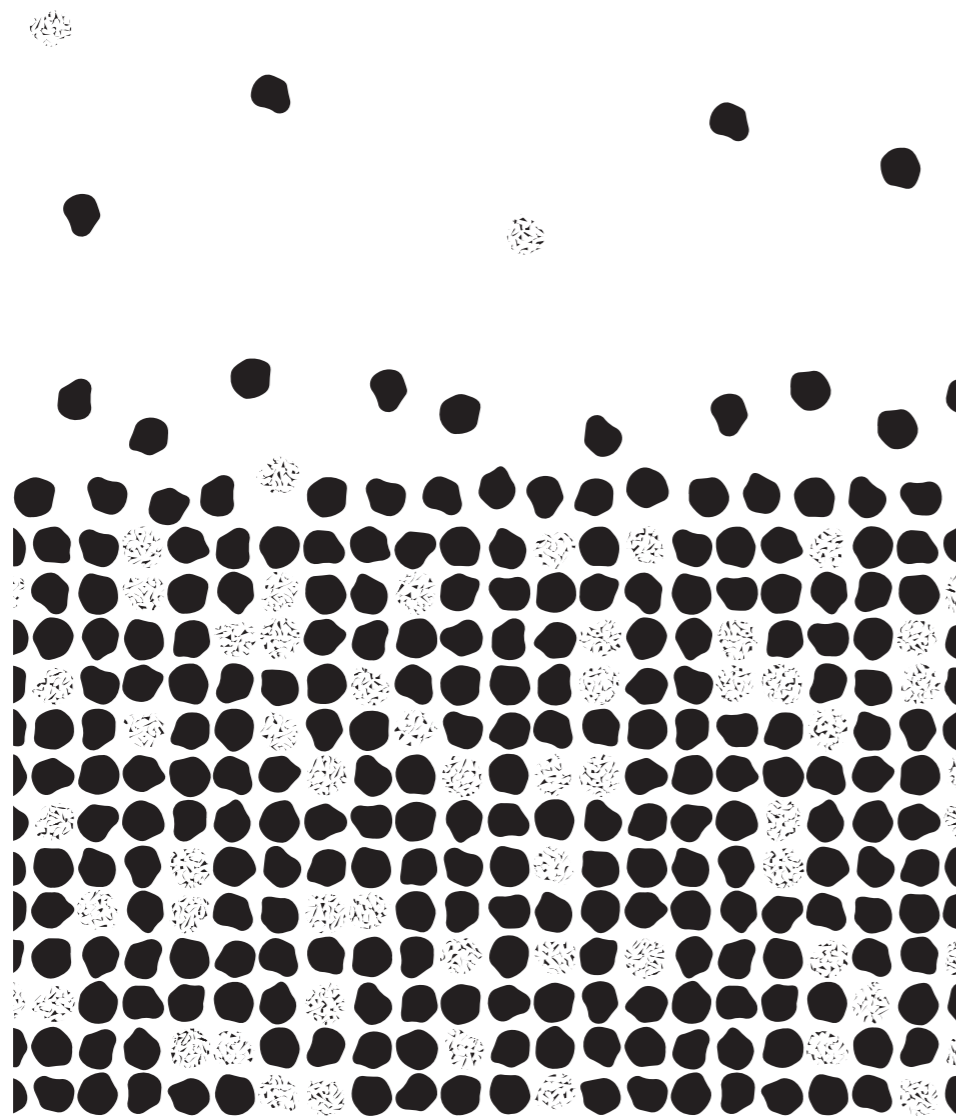
Brunito + Platinum
+ Denim + Blue

Bonbon

Design:
Paola Navone

Anno:
2016
Destra:
Bonbon Aquamarine /
White | Ardesia | Aquamarine,
dettaglio della superficie

Year:
2016
Right:
Bonbon Aquamarine /
White | Ardesia | Aquamarine,
surface detail







II Pastiglie di forme irregolari, dai colori tenui e polverosi, formano un inedito mosaico. Paola Navone disegna una collezione delicata e morbida nelle linee, ma dalla forte personalità, che sa essere ironica e divertente, rimanendo sempre stilosa. In versione tinta unita richiama al fascino poetico dei rivestimenti senza tempo. In versione mélange gioca con colori e forme, per effetti inaspettati.

EN Irregular shapes like old-fashioned sugar candies in dusty pastel colours create a unique mosaic. Paola Navone has designed a delicate collection built on soft lines and a strong personality. Always stylish, it never lacks a touch of humour and whimsy. In its monochrome version it recalls the timeless poetic elegance of classic wall coverings. Its multicolour variation plays with colours and forms to create unexpected effects.

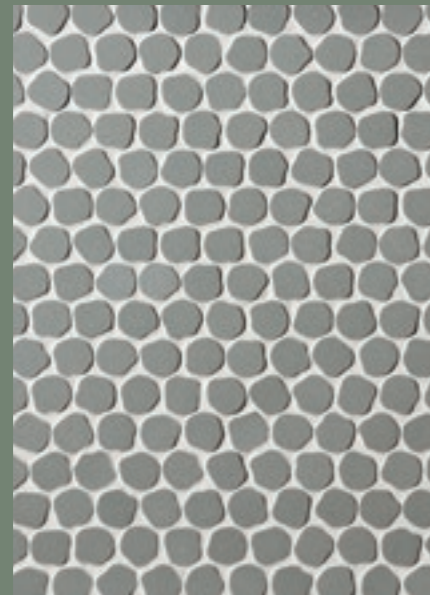




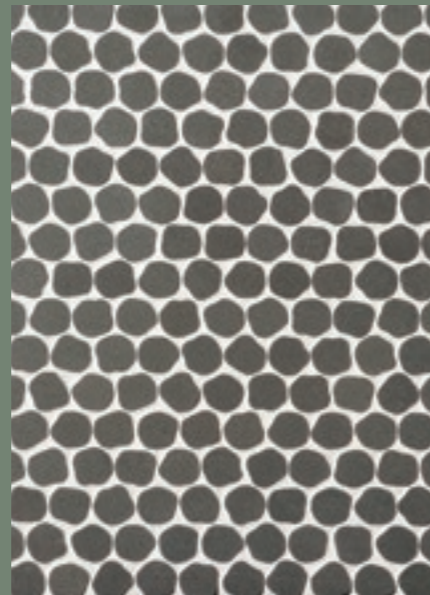
White



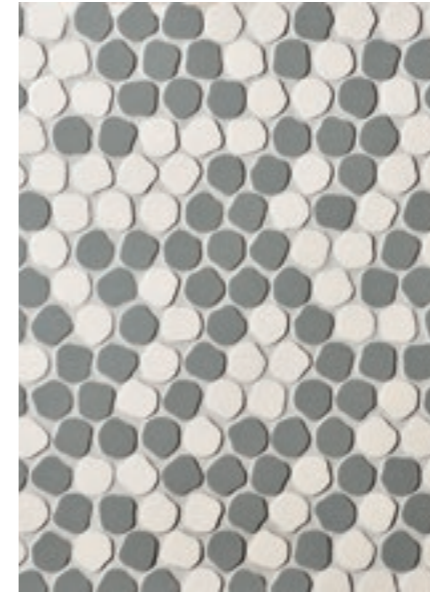
Aquamarine



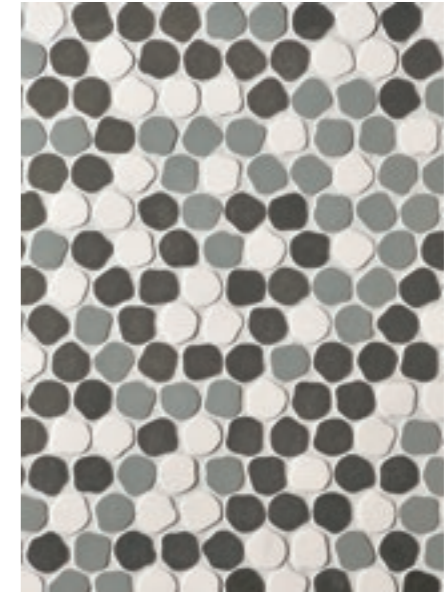
Ardesia



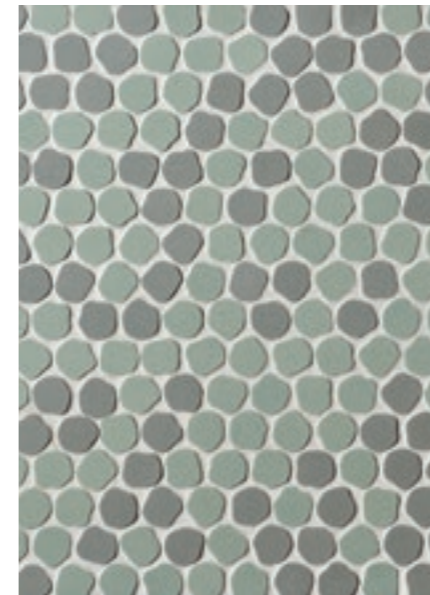
Smoke



Ardesia | White



White | Ardesia | Smoke



Ardesia | Aquamarine



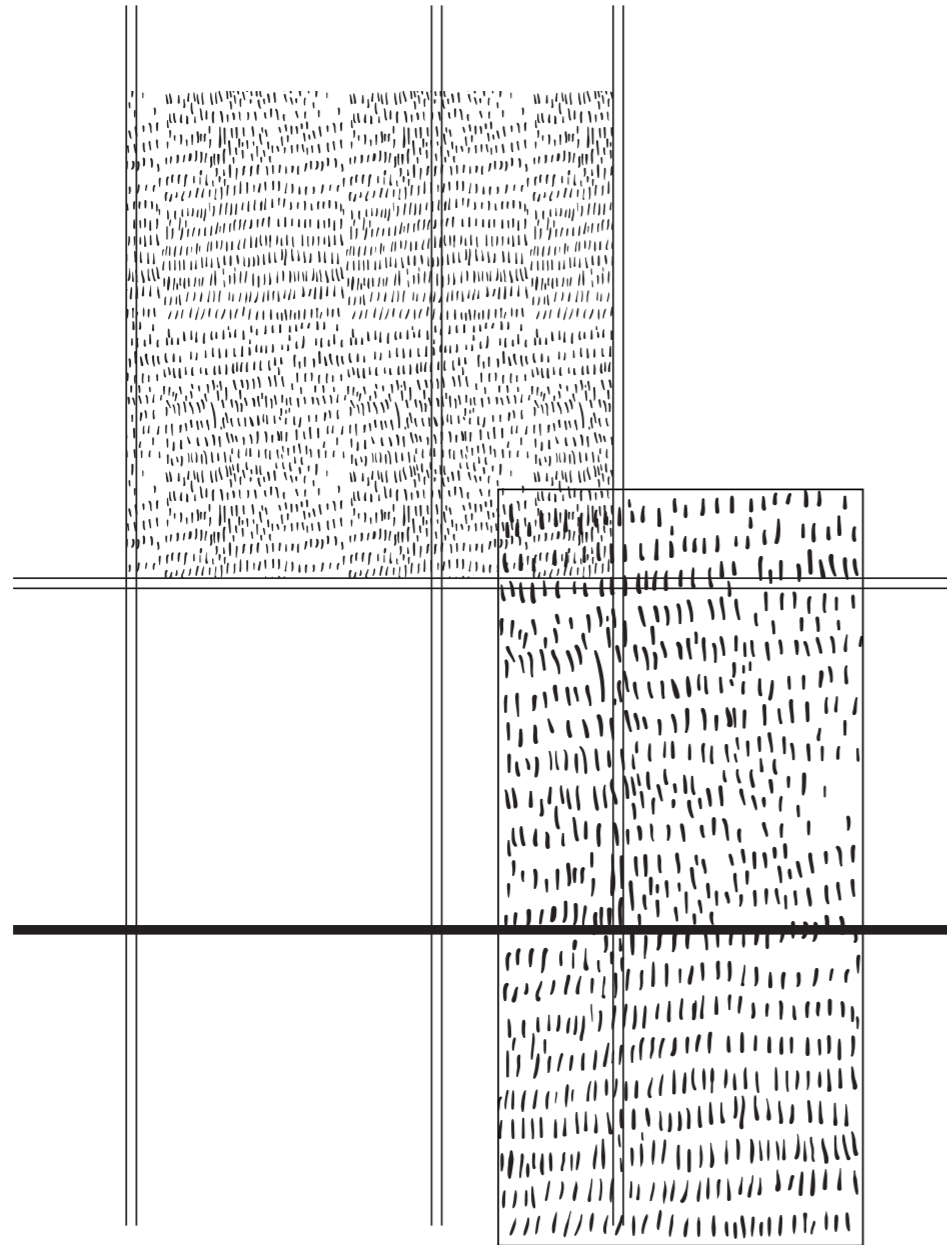
White | Ardesia | Aquamarine

Imprint

Design:
Alissa + Nienke

Anno:
2016
Destra:
Imprint Silver/Pink,
dettaglio della superficie

EN Year:
2016
Right:
Imprint Silver/Pink,
surface detail



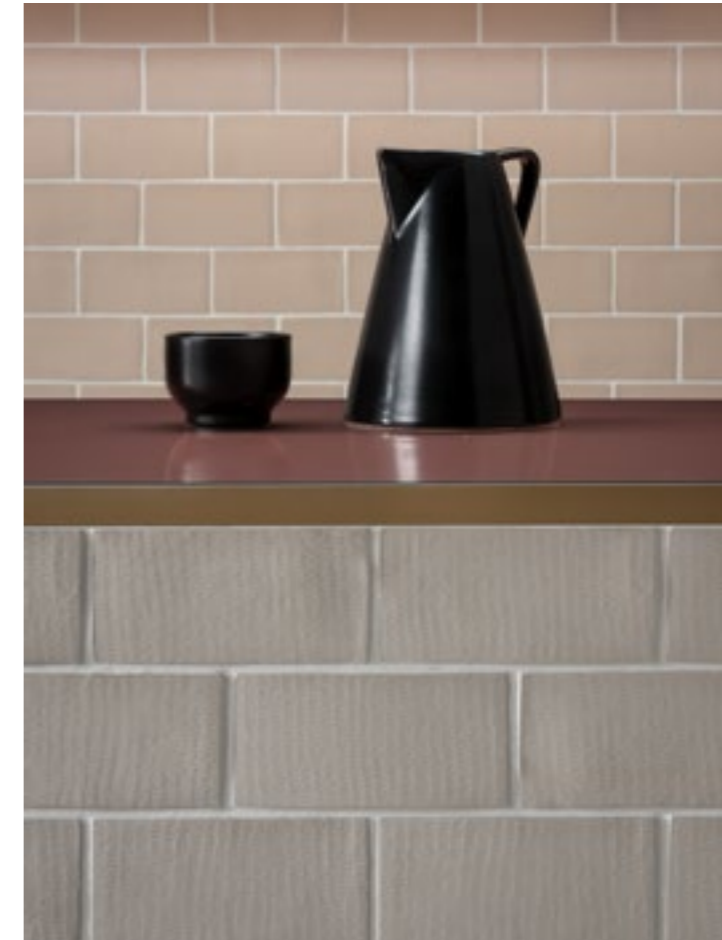
▣ **Collezione focus:**
Imprint Pink/Silver

▣ **Altre collezioni:**
Seeds Chalk

^{EN} **Focus Collection:**
Imprint Pink/Silver

^{EN} **Other Collections:**
Seeds Chalk



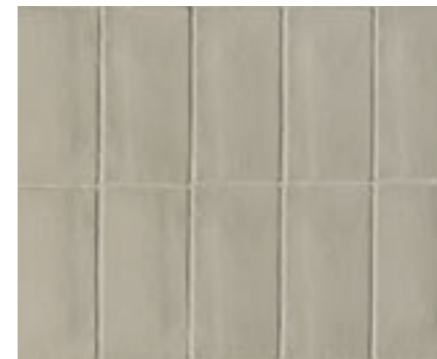


□ Un panetto di argilla modellato a mano e graffiato con incisioni primitive e grezze è il progetto di Alissa+Nienke. Un rivestimento che esalta il gesto, la capacità decorativa che da sempre caratterizza l'intervento dell'uomo su materiali e superfici. L'effetto è potente, solido e ruvido, ma sofisticato nel dettaglio.

□ These tiles of hand-modelled clay inscribed with rough, primitive etchings are Alissa+Nienke's design for Decoratori Bassanesi. This wall covering emphasises the gestures and decorative capacities that have always characterised mankind's approach to materials and surfaces. The effect is powerful, solid and rugged, but with sophisticated details.







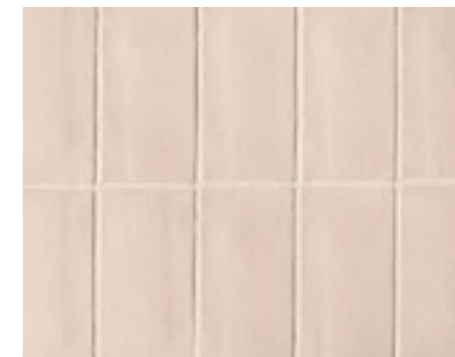
Silver



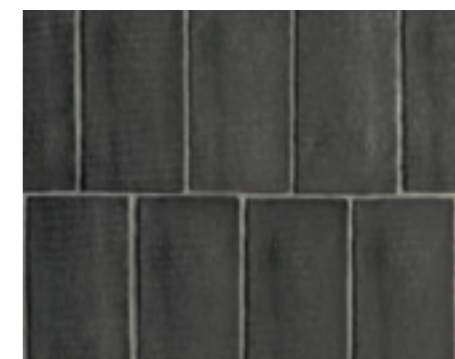
Sand



White



Pink



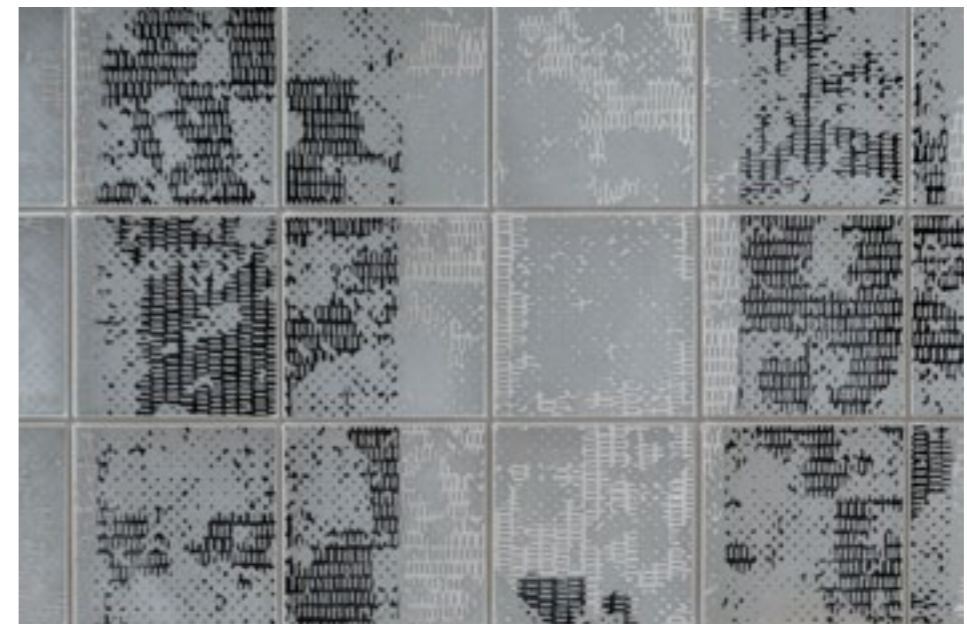
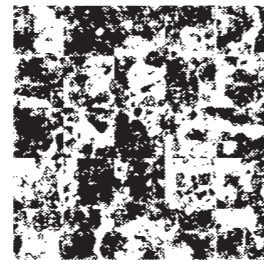
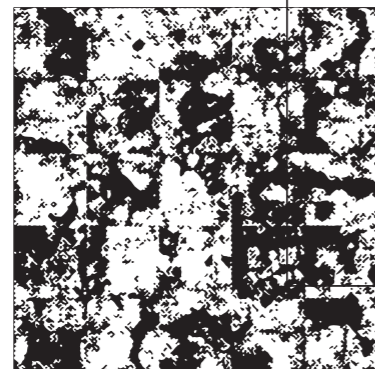
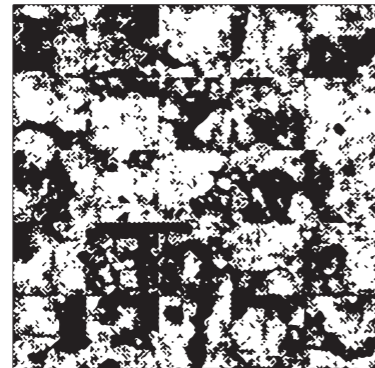
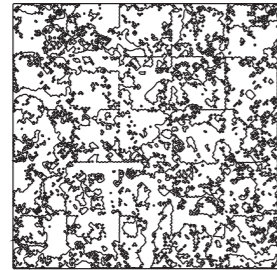
Dark

Vedononvedo

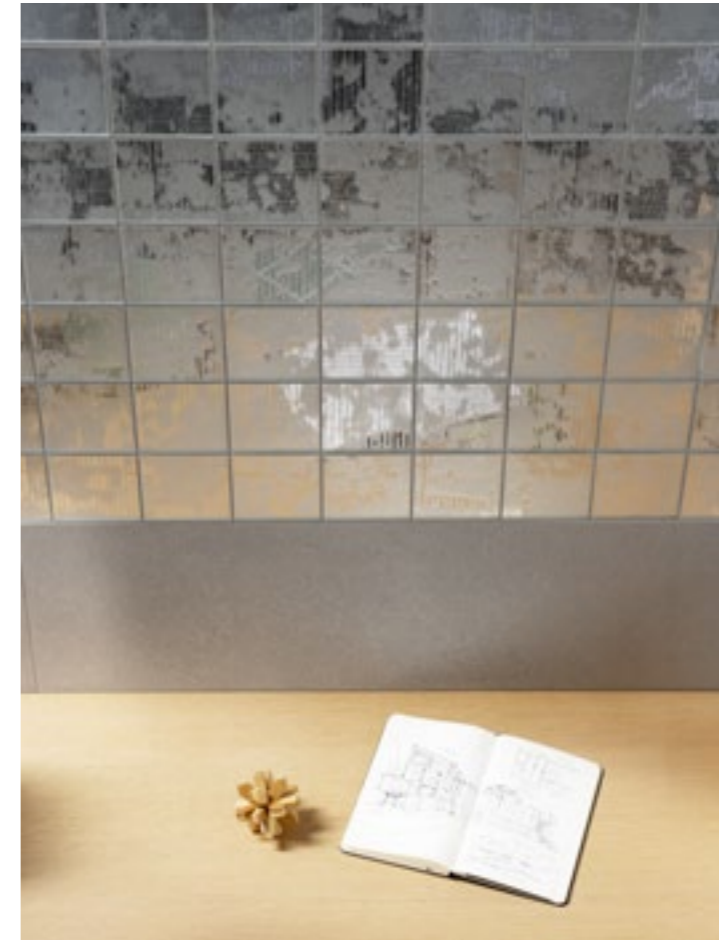
Design:
Paola Navone

Anno:
2015
Destra:
Vedononvedo,
dettaglio della superficie

Year:
2015
Right:
Vedononvedo,
surface detail







□ Riflessi di luce e raffinate suggestioni, grazie all'utilizzo di elementi specchiati, che sono stati graffiati e sabbiati con sapienza. Paola Navone utilizza un decoro astratto sulla superficie riflettente, per creare un affascinante effetto vedo non vedo. Eleganti pareti dal forte impatto visivo sono il risultato di questo dialogo tra luce e materia.

EN Reflections of light and refined, evocative shapes grow out of the use of mirrored elements that have been carefully etched and partially obscured. For this collection, Paola Navone has created an abstract pattern on top of a reflective surface to create a fascinating semi-translucent mirror effect. The result of this dialogue between light and material is an elegant wall with a strong visual impact.



Trax

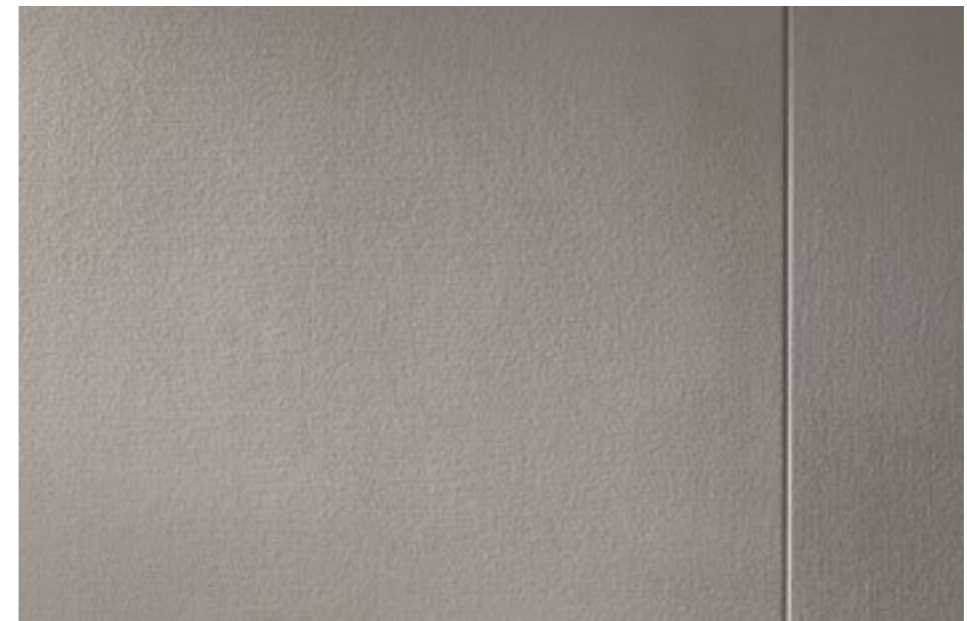
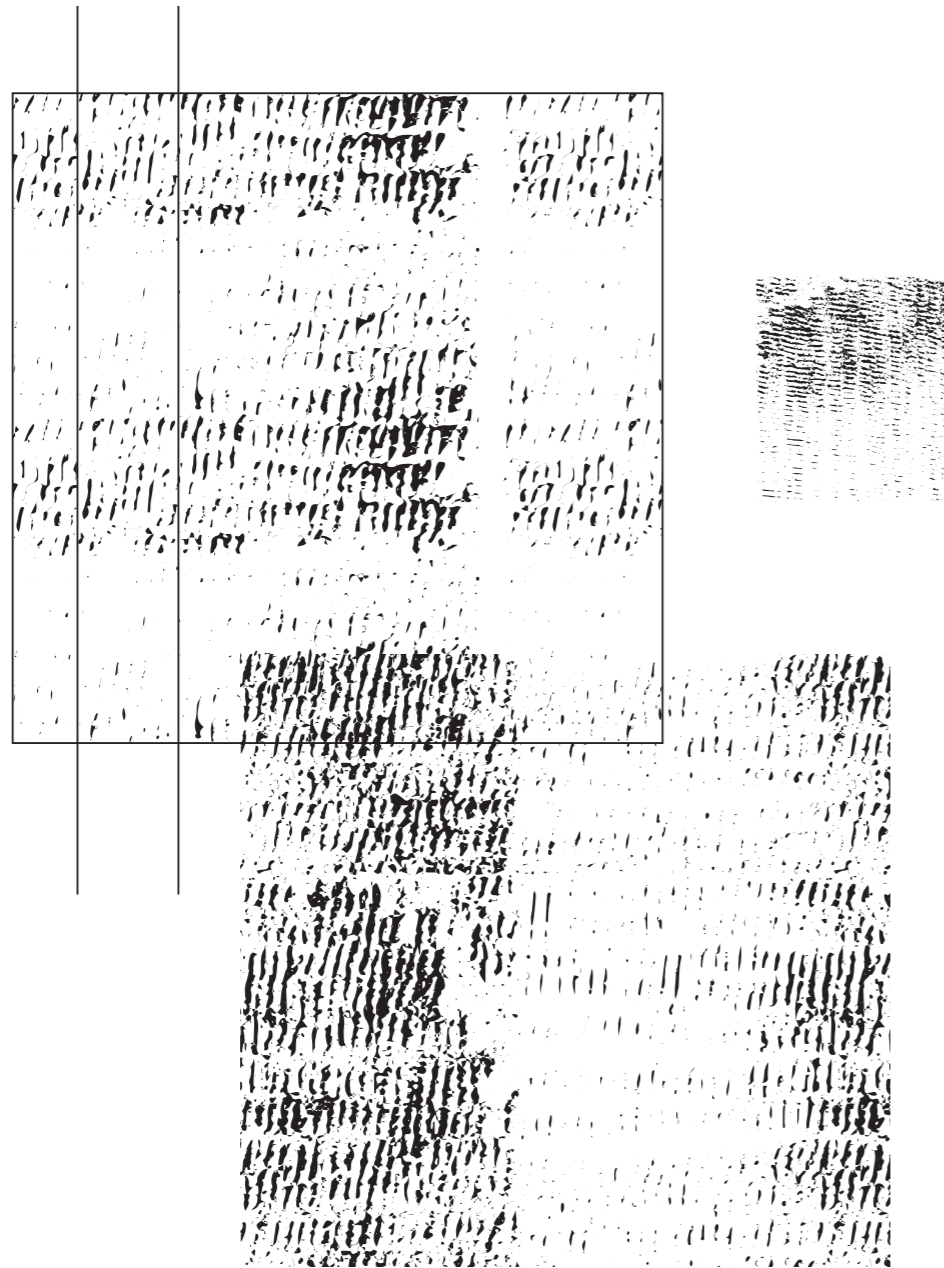
Design:
DB Studio

IT Anno:
2016

Destra:
Trax Soft Cotton / Hard Cotton,
dettaglio della superficie

EN Year:
2016

Right:
Trax Soft Cotton / Hard Cotton,
surface detail



DE **Destra:**
Trax Soft Cotton

EN **Right:**
Trax Soft Cotton

DE Trax Soft, suggerisce la presenza di impronte e tracce che si sono dissolte nel tempo, lasciando un segno discreto e minimale. Ne risultano superfici decorate, ma sufficientemente neutre da costruire la base per creare relazioni tra tutte le collezioni. In Trax Hard, al contrario, queste tracce emergono e si impongono con forza plastica.

EN Trax Soft suggests the traces of washed-away footprints vanished over time, leaving only subtle and minimalist lines. The result is a surface that is decorative but sufficiently neutral to serve as a base upon which to build relationships between all the other collections. On the other hand, in Trax Hard, these lines emerge more forcefully and impose themselves with expressive strength.





Sinistra:
Trax Soft Slate
Destra:
Trax Soft Ash

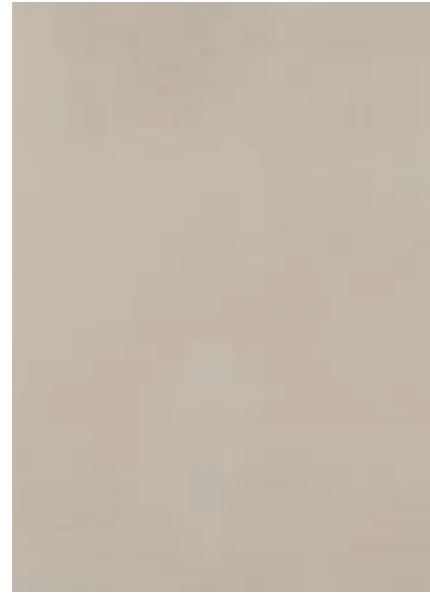
Left:
Trax Soft Slate
Right:
Trax Soft Ash



DE **Destra:**
Trax Hard Cotton

EN **Right:**
Trax Hard Cotton





Soft Cotton



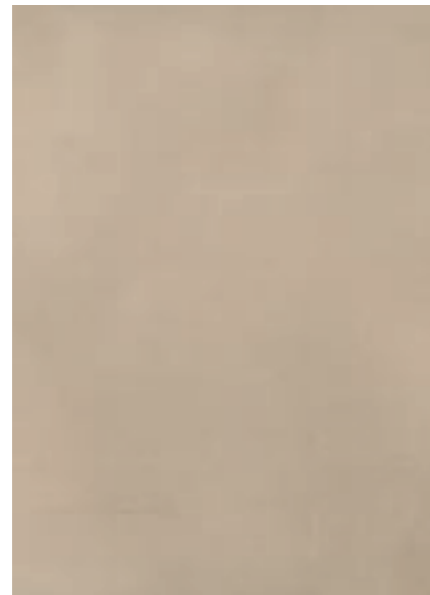
Soft Ash



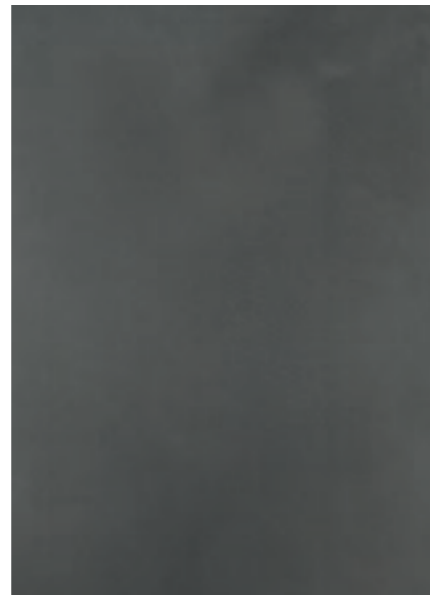
Hard Cotton



Hard Ash



Soft Camel



Soft Slate



Hard Camel



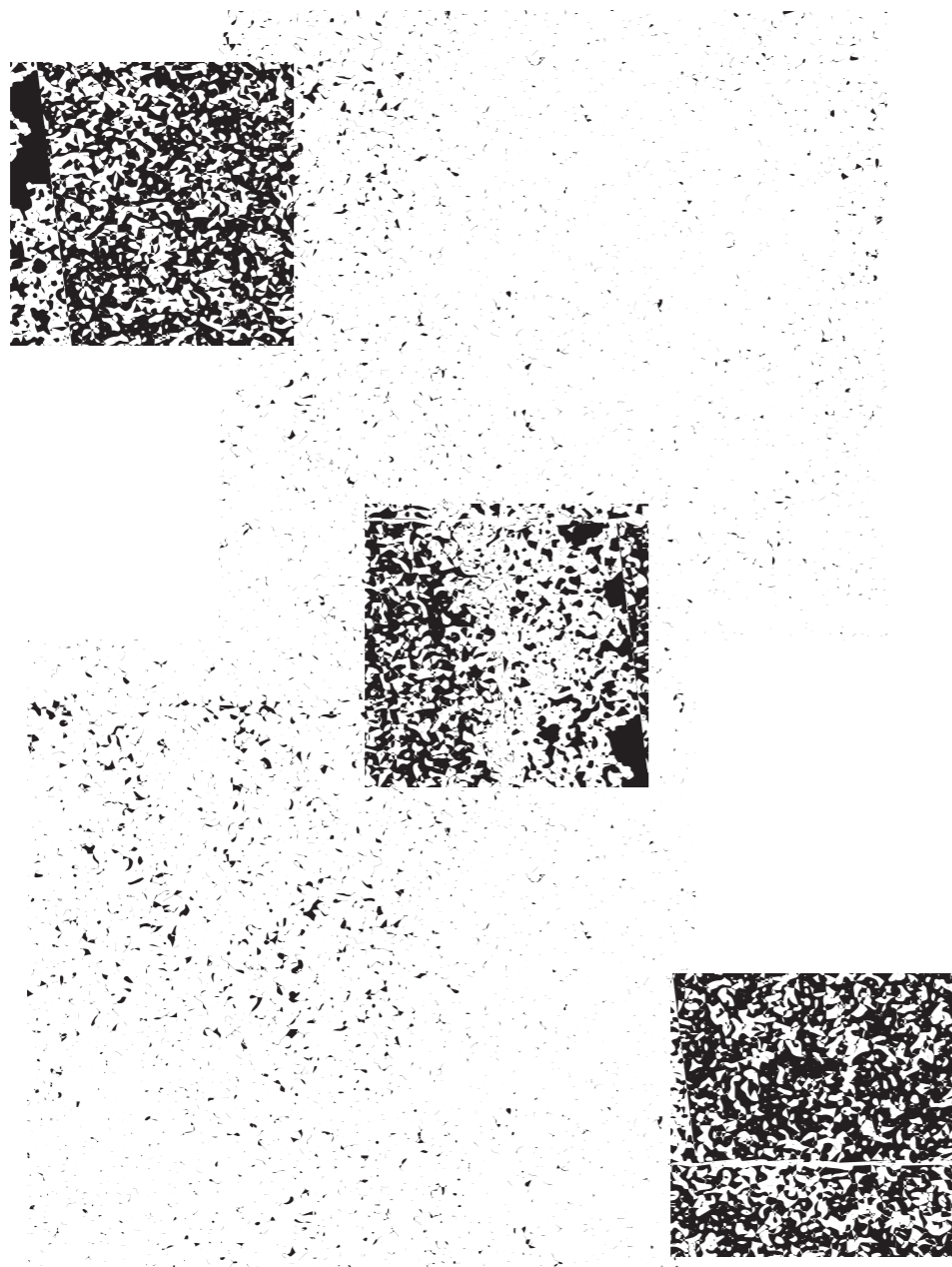
Hard Slate

Seeds

Design:
DB Studio

Anno:
2016
Destra:
Seeds Stone Grey / Chalk,
dettaglio della superficie

Year:
2016
Right:
Seeds Stone Grey / Chalk,
surface detail



DE **Destra:**
Seeds Stone Grey

EN **Right:**
Seeds Stone Grey





IT Sinistra:
Seeds Chalk

EN Left:
Seeds Chalk

Un pavimento che nell'accostamento di blocchi di materia non omogenei trova il perfetto equilibrio. Così nasce Seeds, una collezione per interni contemporanei, che nella sua purezza è in grado di dare uniformità agli ambienti ed al tempo rappresenta una superficie ideale per abbinamenti sempre diversi.

Flooring that finds a perfect balance in the juxtaposition of varied blocks, no two alike. This is the concept behind Seeds, a collection for contemporary interiors, whose pure simplicity brings uniformity to a space and at the same time is an ideal surface for ever-changing pairings.

▣ Sinistra:
Seeds Dust
Destra:
Seeds Chalk



EN Left:
Seeds Dust
Right:
Seeds Chalk





Chalk



Dust



Taupe



Stone Grey

Luci di Venezia

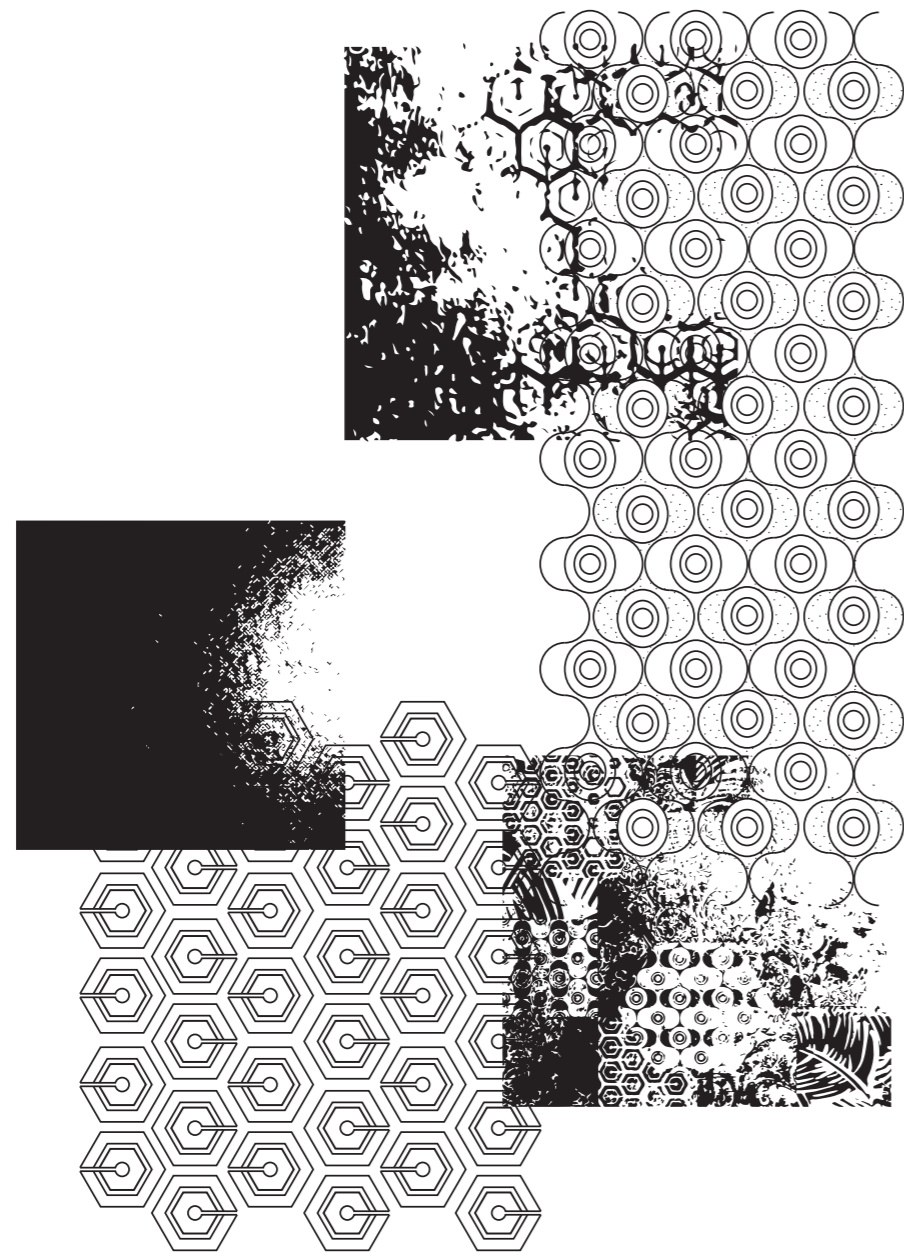
Design:
DB Studio

▣ Anno:
2015

Destra:
Rialto Ice,
Onde Ice

EN Year:
2015

Right:
Rialto Ice,
Onde Ice



Luci di Venezia | 01

▣ **Collezione focus:**
Venezia White, Intreccio White,
Riflesso White

▣ **Focus Collection:**
Venezia White, Intreccio White,
Riflesso White





□ Una collezione ricca di suggestioni, preziosa e unica come la città che la ispira. L'abbraccio tra la luce del cielo e quella riflessa dall'acqua, i bagliori, la poesia e i colori di Venezia, vengono riprodotti sulle superfici in fine gres porcellanato. Il risultato sono degli interni che restituiscono la ricchezza, l'arte e il fascino che si assaporano tra le calli, quando lo sguardo non riesce a capacitarsi di tanta bellezza.

Un'ampia disponibilità di varianti grafiche e cromatiche, accomunate da un'atmosfera di magica sospensione con infiniti effetti iridescenti.

EN A collection rich in evocative details, precious and unique like the city that inspired it. The light from the skies embracing the gleaming light reflected off the water, the poetry and colours of Venice – all reproduced here in fine Gres porcelain. The result is interiors full of the richness, art and charm you find wandering the little alleyways between the canals, when your eyes can hardly take in so much beauty. Available in a wide range of patterns and colours, all bound together by the magical atmosphere of their iridescent effects.





Venezia



Riflesso



Rialto



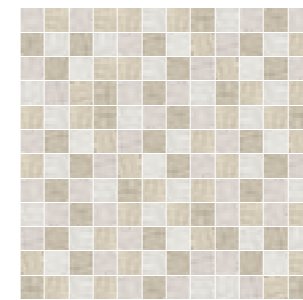
Onde



Cristallo



Intreccio 7.2



Intreccio Small

Moodboards

IT Combinazioni e abbinamenti di stile per progetti su misura

EN Stylish combinations and pairings for personalised designs

IT Sofisticata interazioni di materiali, texture e sfumature. Accostamenti o contrasti cromatici e studiate combinazioni di texture, materiali e disegni.

EN Sophisticated interactions between materials, textures and shades. Contrasts and juxtapositions of colour and carefully selected combinations of textures, materials and patterns.

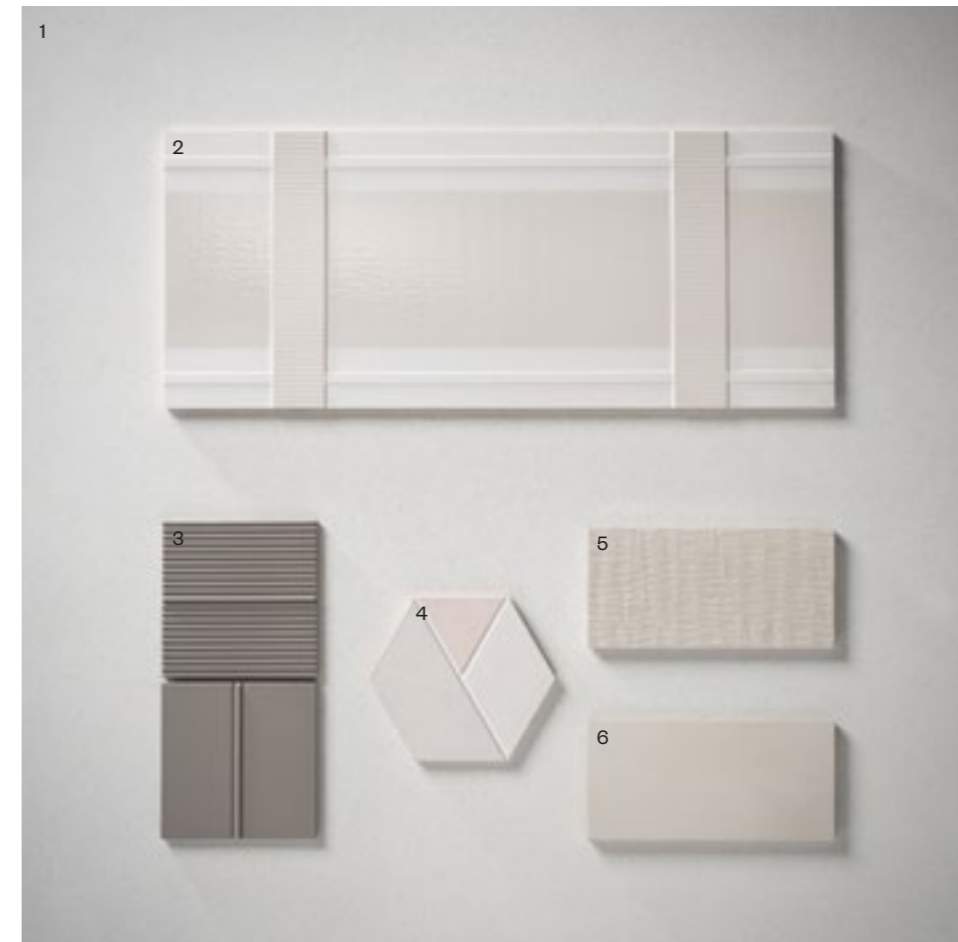
Moodboard | 01

- M01**
1 - Seeds Dust
2 - Bonbon Aquamarine
3 - Segments Small Ice
4 - Vedononvedo
5 - Imprint Silver/White
6 - Tartan Water



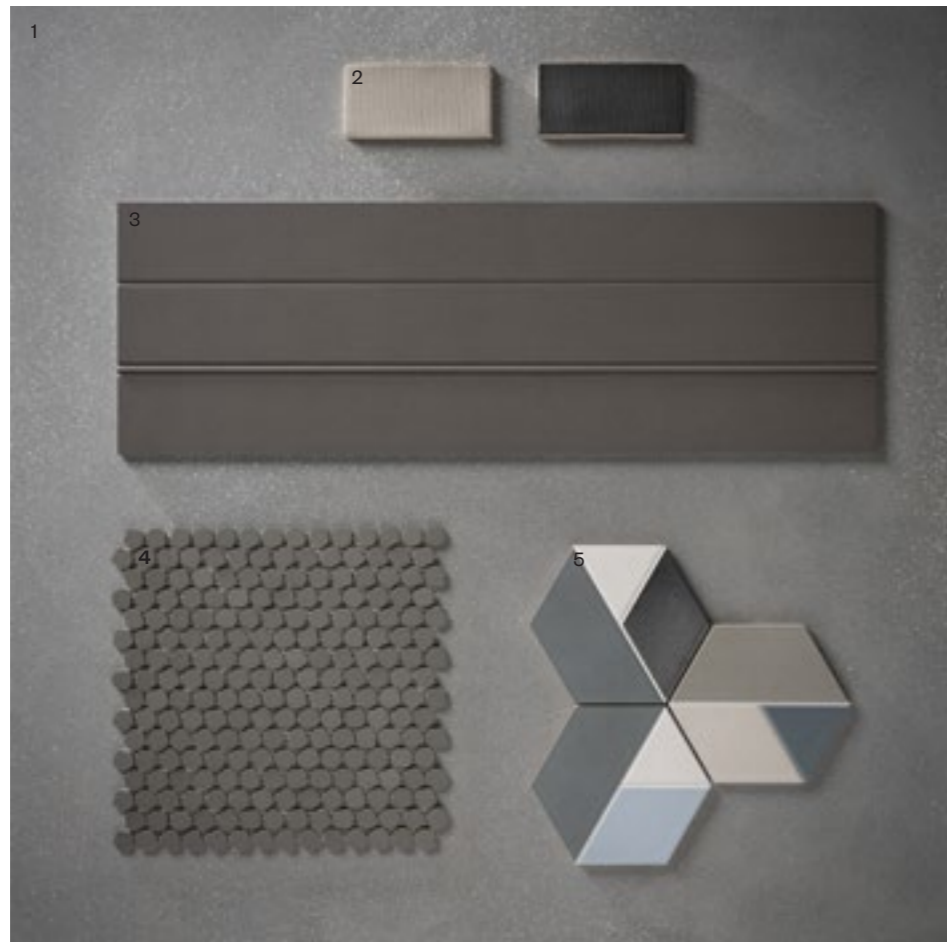
Moodboard | 02

- M02**
1 - Seeds Chalk
2 - Tartan White
3 - Segments Small Dove /
Small Plus Dove
4 - Linea Pink
5 - Trax Hard Cotton
6 - Trax Soft Cotton



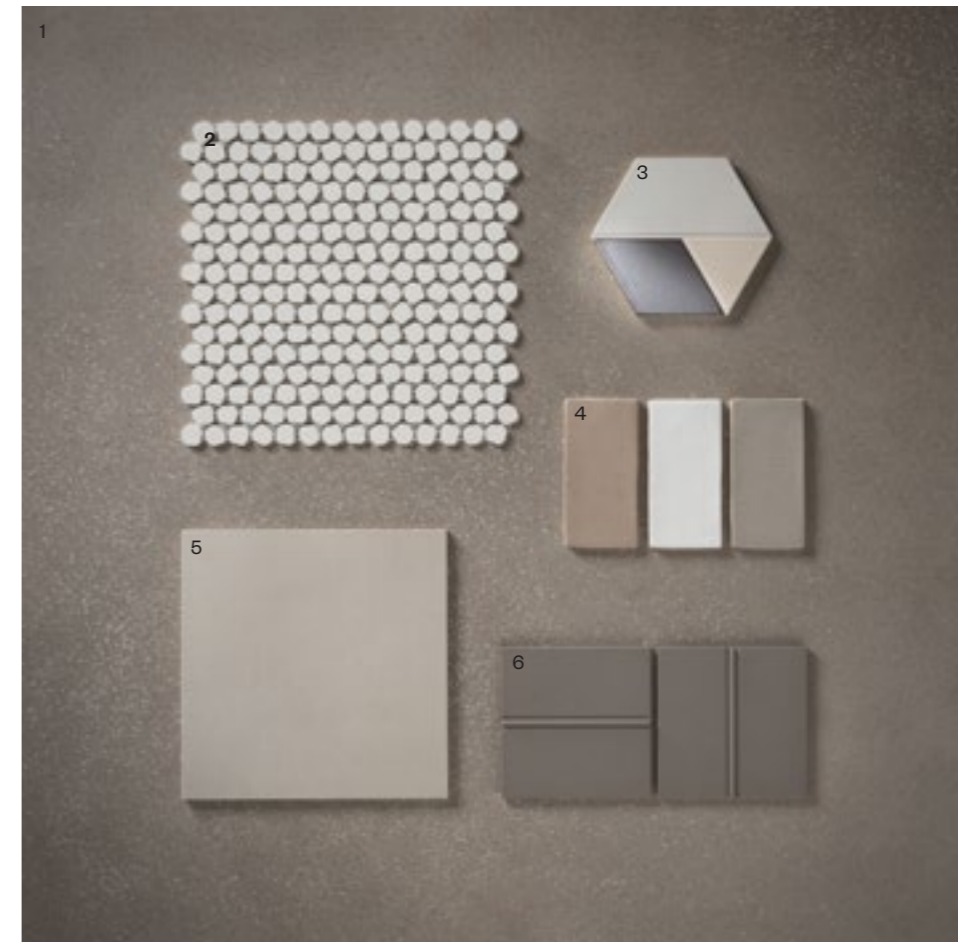
Moodboard | 03

- M03**
1 - Seeds Stone Grey
2 - Imprint Silver/Dark
3 - Segments Large Iron
4 - Bonbon Smoke
5 - Linea Platinum/Blue/Denim



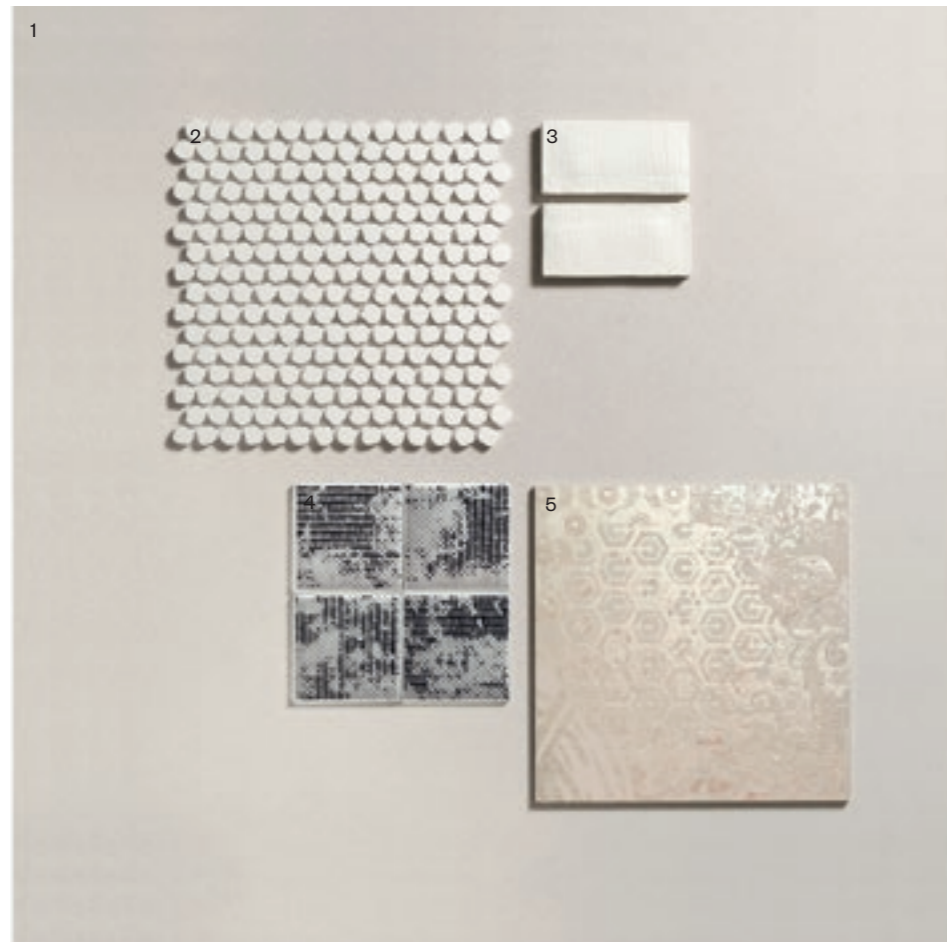
Moodboard | 04

- M04**
1 - Seeds Taupe
2 - Bonbon White
3 - Linea Copper
4 - Imprint Sand/White/Silver
5 - Trax Soft Cotton
6 - Segments Small Dove



Moodboard | 05

- M09**
1 - Seeds Chalk
2 - Bonbon White
3 - Imprint White
4 - Vedononvedo
5 - Luci di Venezia Ice



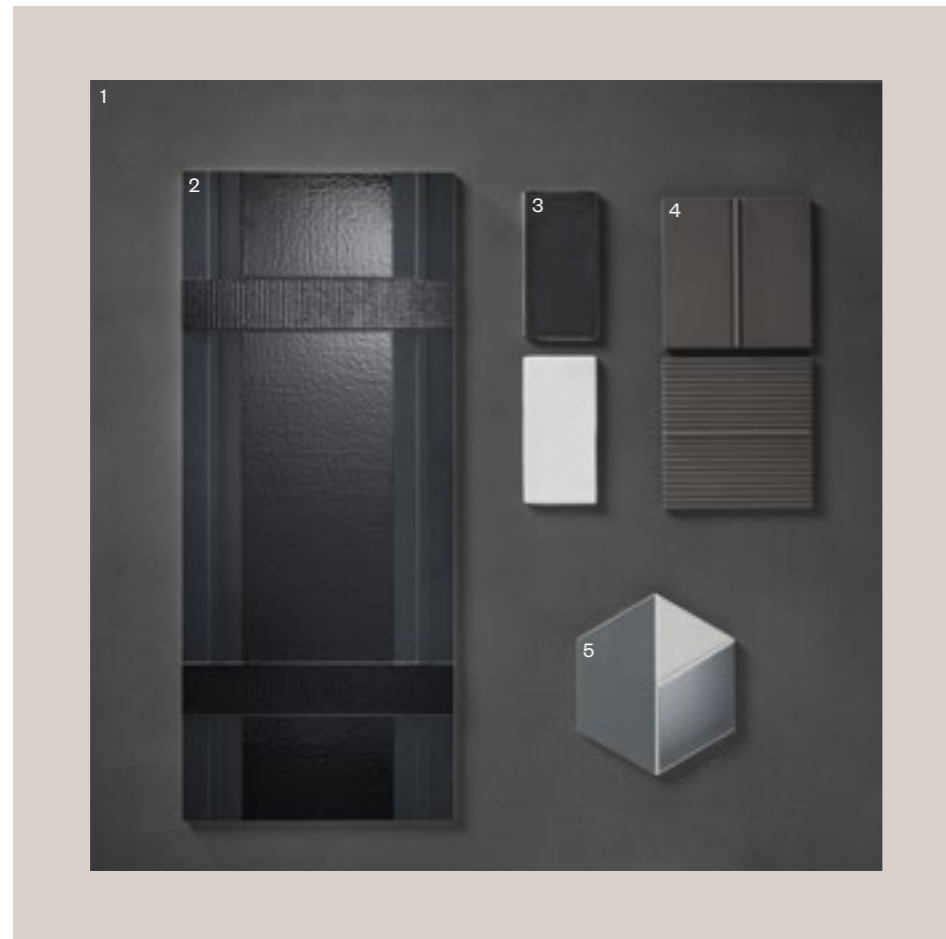
Moodboard | 06

- M10**
1 - Trax Soft Camel
2 - Bonbon White
3 - Linea Cinnamon
4 - Linea Pink
5 - Linea Brass
6 - Trax Hard Camel
7 - Imprint White



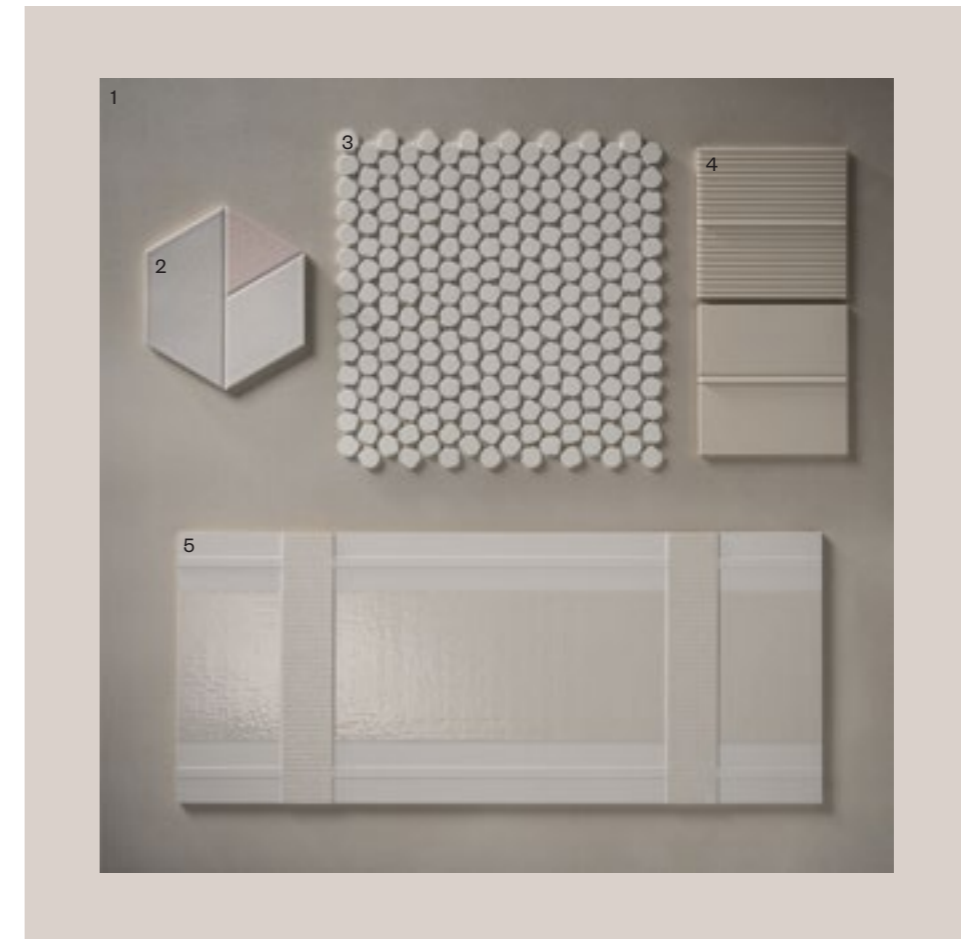
Moodboard | 07

- M05**
1 - Trax Soft Slate
2 - Tartan Black
3 - Imprint Dark / White
4 - Segments Small Iron / Small Plus Iron
5 - Linea Platinum



Moodboard | 08

- M06**
1 - Trax Soft Cotton
2 - Linea Pink
3 - Bonbon White
4 - Segments Small Plus Bone/
Small Bone
5 - Tartan White



Moodboard | 09

- M07**
1 - Trax Hard Ash
2 - Bonbon Ardesia | White
3 - Linea Copper
4 - Vedononvedo
5 - Tartan White



Moodboard | 10

- M08**
1 - Trax Hard Cotton
2 - Tartan Rust
3 - Imprint White/Pink
4 - Bonbon White
5 - Linea Pink



Dati tecnici

Technical data

DECORATORI®
BASSANESI
ITALIA ■ 1988

▮ Abbiamo lavorato alla creazione di collezioni uniche per qualità e bellezza, collaborando con i nomi più interessanti del design internazionale, guidati però dalla precisa volontà di proporre un catalogo basato non solo sul singolo prodotto, ma anche sulle relazioni tra prodotti diversi. Formati, colori e tipologie di ogni singola collezione, di seguito riportati, fanno parte di questo studio progettuale e consentono risposte articolate alle necessità dei committenti. Il tema della decorazione è stato sviluppato in modo fortemente coerente ai linguaggi dell'interior contemporaneo.

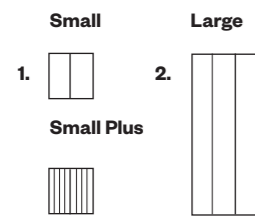
▮ In working towards the creation of these unique, high-quality and beautiful collections, collaborating with the most interesting designers on the international scene, we were guided by our desire to present a catalogue that would not be based on one single product but rather on the relationships between different products. Formats, colours and types of every collection listed in the following pages are all part of this design project and make it possible for us to provide the ideal solutions to our clients' needs. The theme of the decor has been developed in harmony with the visual language of contemporary interiors.

Collezione Collection	Pagina Page	Informazioni Informations
Segments	142	▮ Dimensioni ^{EN} Size ▮ Finiture ^{EN} Finishes
Tartan	146	▮ Dimensioni ^{EN} Size ▮ Finiture ^{EN} Finishes
Linea	148	▮ Dimensioni ^{EN} Size ▮ Finiture ^{EN} Finishes
Bonbon	152	▮ Dimensioni ^{EN} Size ▮ Finiture ^{EN} Finishes
Vedononvedo	154	▮ Dimensioni ^{EN} Size ▮ Finiture ^{EN} Finishes
Seeds	156	▮ Dimensioni ^{EN} Size ▮ Finiture ^{EN} Finishes
Trax	158	▮ Dimensioni ^{EN} Size ▮ Finiture ^{EN} Finishes
Imprint	160	▮ Dimensioni ^{EN} Size ▮ Finiture ^{EN} Finishes
Luci di Venezia	164	▮ Dimensioni ^{EN} Size ▮ Finiture ^{EN} Finishes

Segments

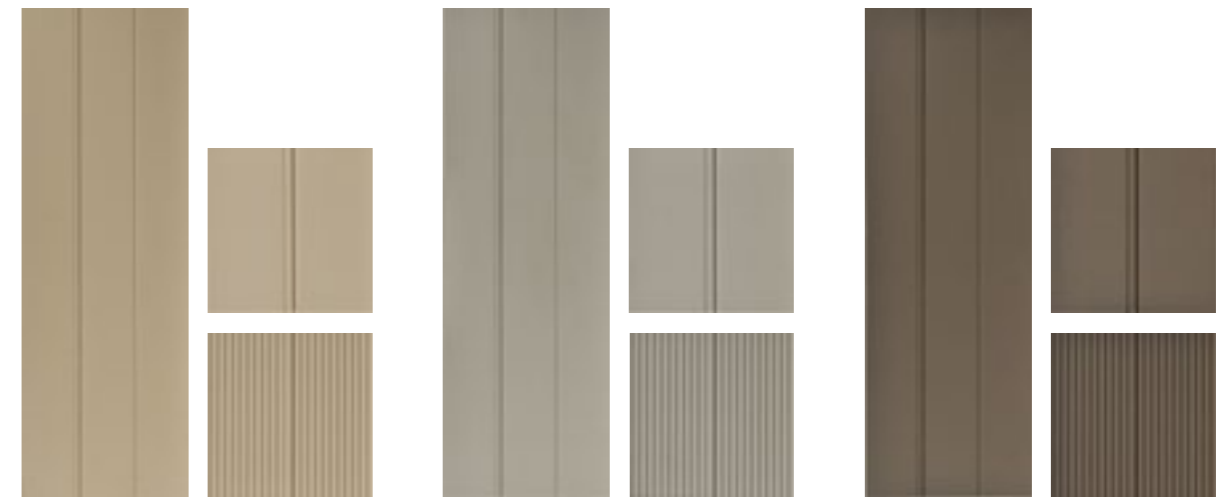
□ Spessore ^{EN} Thickness:
9 mm

□ Fuga minima consigliata
^{EN} Minimum recommended grout line
3 mm



1. 14x14 cm
2. 24x71,5 cm

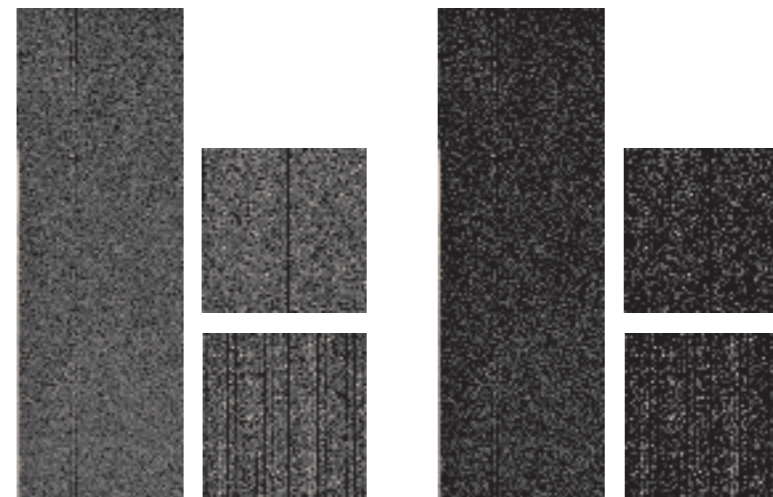
Finitura Finish	Dimensione Size	Codice Code
Bone	Small 14x14 cm	DCSEMBONE
	Small Plus 14x14 cm	DCSEMPBONE
	Large 24x71,5 cm	DCSELABONE
Ice	Small 14x14 cm	DCSESMICE
	Small Plus 14x14 cm	DCSESMPICE
	Large 24x71,5 cm	DCSELAICE
Dove	Small 14x14 cm	DCSESMDOVE
	Small Plus 14x14 cm	DCSEMPDOVE
	Large 24x71,5 cm	DCSELADOVE
Iron	Small 14x14 cm	DCSESMIRON
	Small Plus 14x14 cm	DCSESMPIRON
	Large 24x71,5 cm	DCSELAIRON
Coal	Small 14x14 cm	DCSESMCOAL
	Small Plus 14x14 cm	DCSESMPCOAL
	Large 24x71,5 cm	DCSELACOAL



Bone

Ice

Dove



Iron

Coal

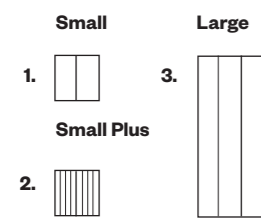
Segments

Spessore ^{EN} Thickness:
9 mm

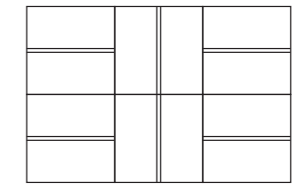
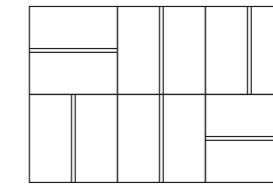
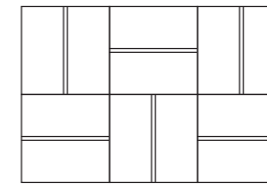
Fuga minima consigliata
^{EN} Minimum recommended grout line
3 mm

Note di posa

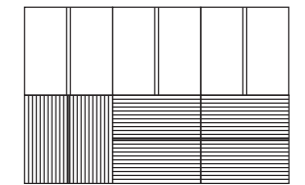
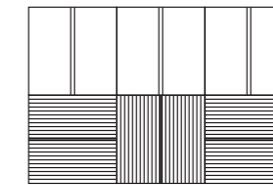
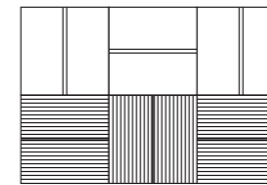
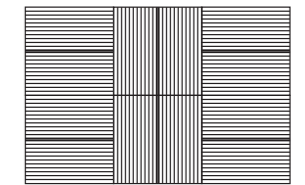
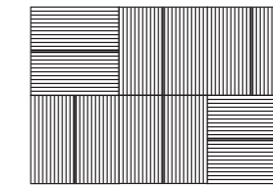
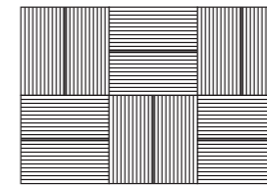
Laying notes



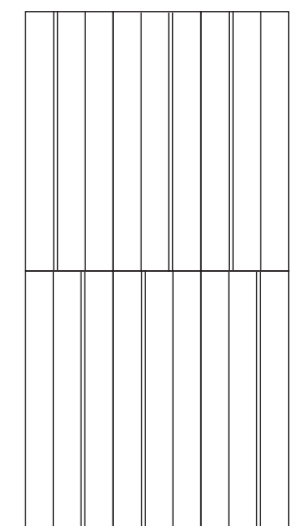
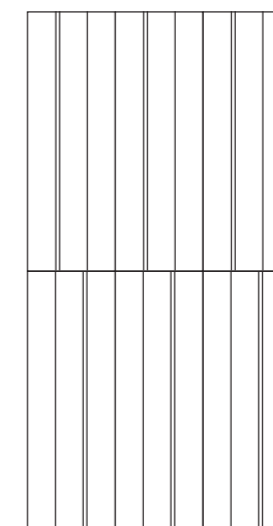
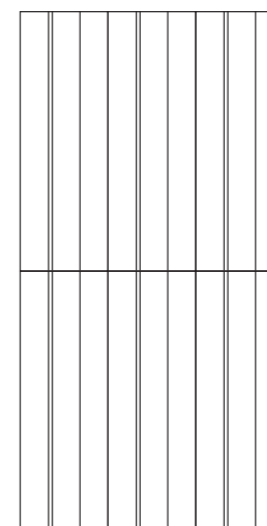
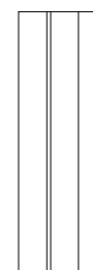
01



02



03



Tartan

□ Spessore ^{EN} Thickness:
9 mm

□ Fuga minima consigliata
^{EN} Minimum recommended grout line
2 mm



1. 25,5x61 cm

Finitura Finish	Dimensione Size	Codice Code
White	25,5x61 cm	DCTARWHITE
Grey	25,5x61 cm	DCTARGREY
Rust	25,5x61 cm	DCTARRUST
Water	25,5x61 cm	DCTARWATER
Black	25,5x61 cm	DCTARBLACK



White



Grey



Water



Rust

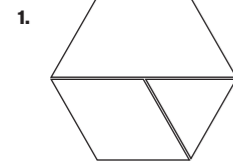


Black

Linea

□ Spessore ^{EN} Thickness:
9 mm

□ Fuga minima consigliata
^{EN} Minimum recommended grout line
3 mm



1. 15x17 cm

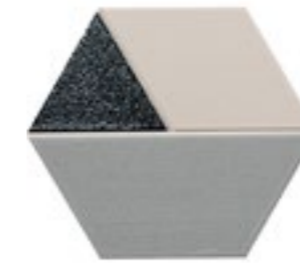
	Finitura Finish	Dimensione Size	Codice Code
MO	Blue	15x17 cm	LINEABL
MO	Denim	15x17 cm	LINEADE
PZ	Brunito	15x17 cm	LINEABRU
PZ	Platinum	15x17 cm	LINEAPL
MO	Pink	15x17 cm	LINEAPI
MO	Cinnamon	15x17 cm	LINEACI
PZ	Brass	15x17 cm	LINEABRA
PZ	Copper	15x17 cm	LINEACO



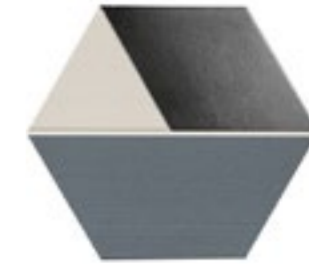
Blue



Denim



Brunito



Platinum



Pink



Cinnamon



Brass



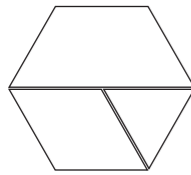
Copper

Linea

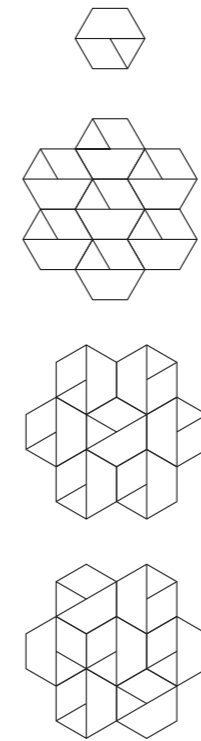
Spessore ^{EN} Thickness:
9 mm

Fuga minima consigliata
^{EN} Minimum recommended grout line
3 mm

1.

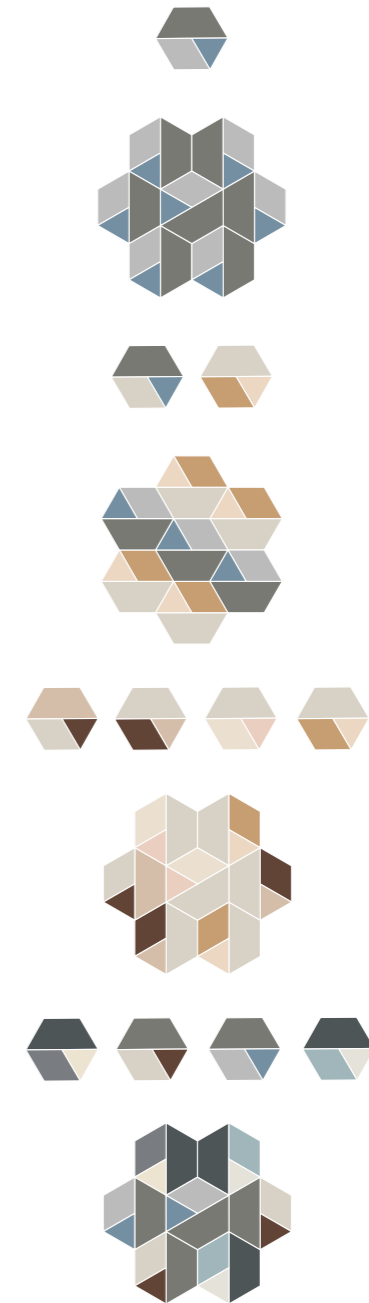


1. 15x17 cm



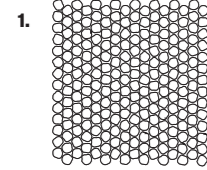
Note di posa

Laying notes



Bonbon

Spessore ^{EN} Thickness:
5 mm



1. 30,5x30,5 cm

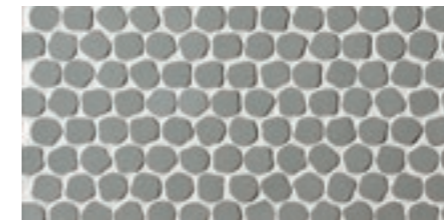
Finitura Finish	Dimensione Size	Codice Code
White	30,5x30,5 cm	BONBONWH
Aquamarine	30,5x30,5 cm	BONBONAQ
Ardesia	30,5x30,5 cm	BONBONAR
Smoke	30,5x30,5 cm	BONBONSM
Ardesia White	30,5x30,5 cm	BONBONMIXA
Aquamarine Ardesia	30,5x30,5 cm	BONBONMIXB
White Ardesia Smoke	30,5x30,5 cm	BONBONMIXC
White Ardesia Aquamarine	30,5x30,5 cm	BONBONMIXD



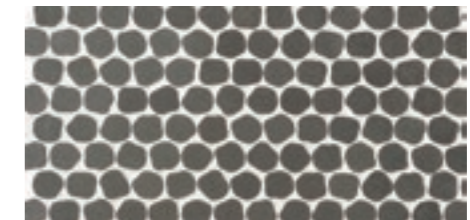
White



Aquamarine



Ardesia



Smoke



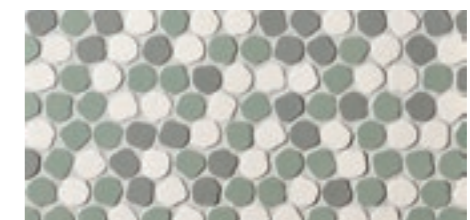
Ardesia | White



Aquamarine | Ardesia



White | Ardesia | Smoke

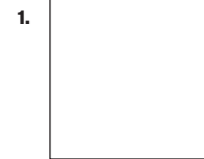


White | Ardesia | Aquamarine

Vedononvedo

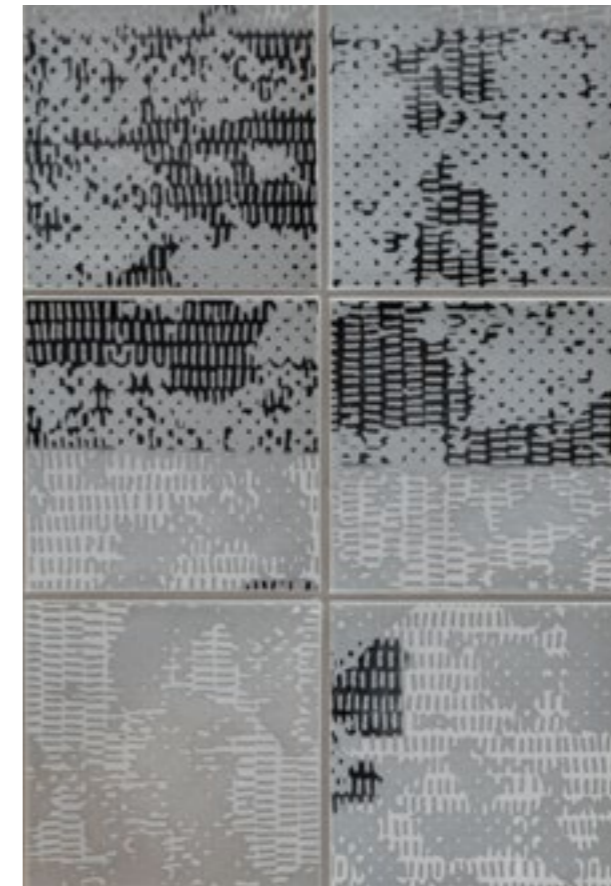
□ Spessore ^{EN} Thickness:
5 mm

□ Fuga minima consigliata
^{EN} Minimum recommended grout line
2 mm



1. 10x10 cm

Finitura Finish	Dimensione Size	Codice Code
Vedononvedo	10x10 cm	VEDONONVEDO

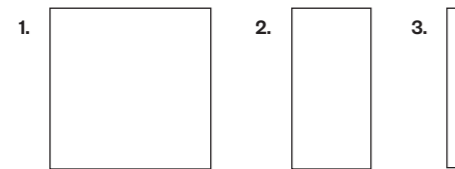


Vedononvedo

Seeds

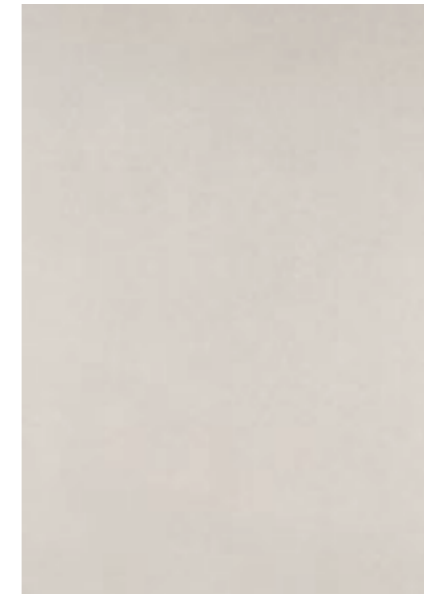
☐ Spessore ^{EN} Thickness:
10,5 mm

☐ Fuga minima consigliata
^{EN} Minimum recommended grout line
2 mm

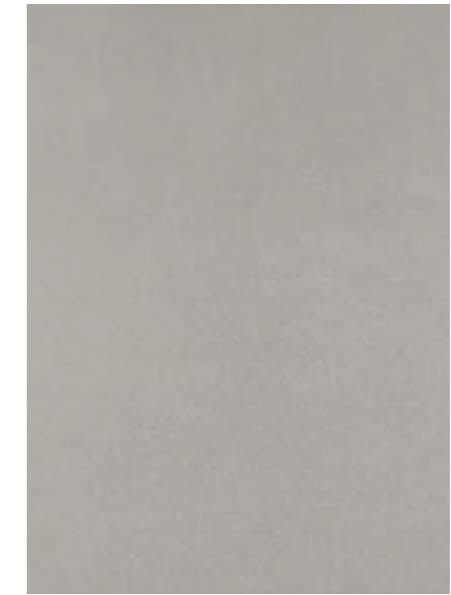


1. 90x90 cm
2. 45x90 cm
3. ☐ Battiscopa ^{EN} Skirting:
7x90 cm

Finitura Finish	Dimensione Size	Codice Code
Chalk	90x90 cm	SE909CH
	45x90 cm	SE459CH
	7x90 cm	SEBCH
Dust	90x90 cm	SE909DU
	45x90 cm	SE459DU
	7x90 cm	SEBDU
Taupe	90x90 cm	SE909TA
	45x90 cm	SE459TA
	7x90 cm	SEBTA
Stone Grey	90x90 cm	SE909SG
	45x90 cm	SE459SG
	7x90 cm	SEBSSG



Chalk



Dust



Taupe

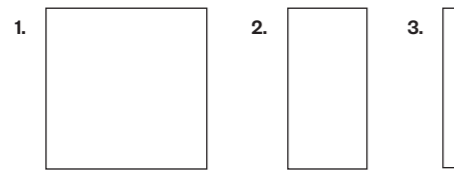


Stone Grey

Trax

⌘ Spessore ^{EN} Thickness:
10,5 mm

⌘ Fuga minima consigliata
^{EN} Minimum recommended grout line
2 mm



1. **75x75 cm**
2. **37,5x75 cm**
3. ⌘ **Battiscopa ^{EN} Skirting:**
7x75 cm

Finitura Finish	Dimensione Size	Codice Code
Soft Cotton	75x75 cm	TR75COSOFT
	37,5x75 cm	TR37COSOFT
	7x75 cm	TRBCOSOFT
Hard Cotton	75x75 cm	TR75COHARD
	37,5x75 cm	TR37COHARD
	7x75 cm	TRBCOHARD
Soft Camel	75x75 cm	TR75CSOFT
	37,5x75 cm	TR37CSOFT
	7x75 cm	TRBCSOFT
Hard Camel	75x75 cm	TR75CHARD
	37,5x75 cm	TR37CHARD
	7x75 cm	TRBCHARD
Soft Ash	75x75 cm	TR75ASOFT
	37,5x75 cm	TR37ASOFT
	7x75 cm	TRBASOFT
Hard Ash	75x75 cm	TR75AHARD
	37,5x75 cm	TR37AHARD
	7x75 cm	TRBAHARD
Soft Slate	75x75 cm	TR75SSOFT
	37,5x75 cm	TR37SSOFT
	7x75 cm	TRBSSOFT
Hard Slate	75x75 cm	TR75SHARD
	37,5x75 cm	TR37SHARD
	7x75 cm	TRBSHARD



Soft Cotton



Hard Cotton



Soft Camel



Hard Camel



Soft Ash



Hard Ash



Soft Slate

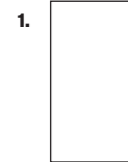


Hard Slate

Imprint

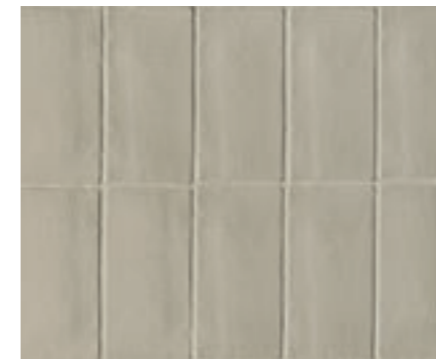
□ Spessore ^{EN} Thickness:
10,5 mm

□ Fuga minima consigliata
^{EN} Minimum recommended grout line
2 mm



1. 7x14 cm

Finitura Finish	Dimensione Size	Codice Code
White	7x14 cm	IMPRINTWH
Sand	7x14 cm	IMPRINTSA
Silver	7x14 cm	IMPRINTSI
Pink	7x14 cm	IMPRINTPI
Dark	7x14 cm	IMPRINTDA



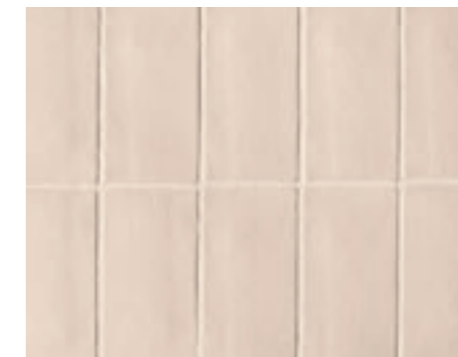
Silver



Sand



White



Pink



Dark

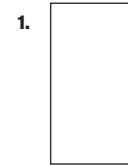
Imprint

☐ Spessore ^{EN} Thickness:
10,5 mm

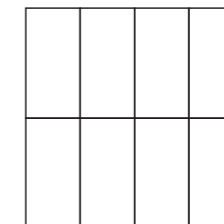
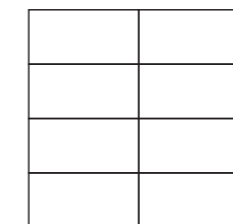
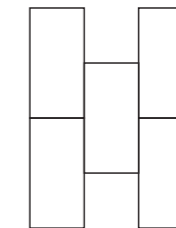
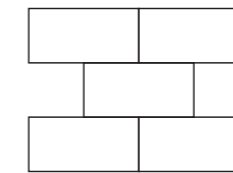
☐ Fuga minima consigliata
^{EN} Minimum recommended grout line
2 mm

☐ Note di posa

^{EN} Laying notes

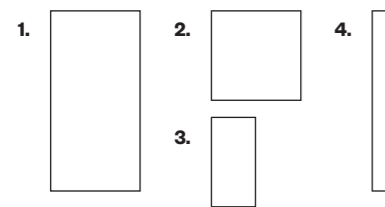


1. 7x14 cm



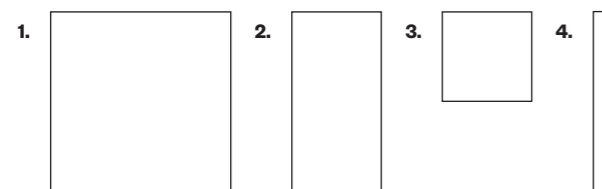
Luci di Venezia

Venezia, Rialto, Onde, Cristallo



- 1. 60x120 cm
 - 2. 60x60 cm
 - 3. 36x60 cm
 - 4. 6x60 cm
- ☐ Spessore ^{EN} Thickness:
 ≈4,8 mm
 ≈12 mm
 ≈4,8 mm

Riflesso

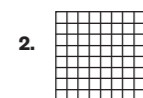


- 1. 120x120 cm
 - 2. 60x120 cm
 - 3. 60x60 cm
 - 4. 6x60 cm
- ☐ Spessore ^{EN} Thickness:
 ≈4,8 mm

Intreccio 7.2



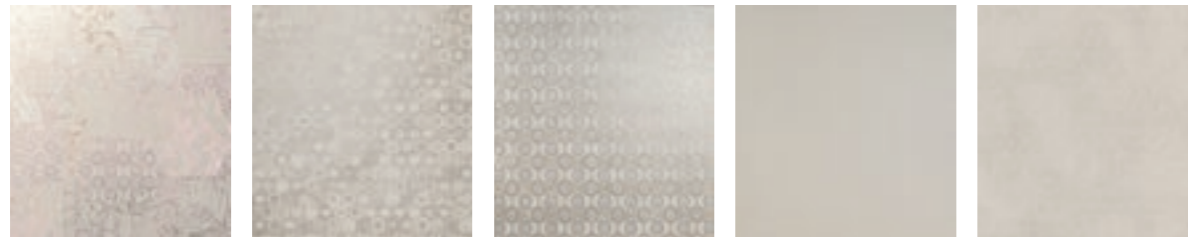
Intreccio small



- 1. 30x30 cm
Tessera 7,2x7,2 cm
 - 2. 30x30 cm
Tessera 2,3x2,3 cm
- ☐ Spessore ^{EN} Thickness:
 ≈4,8 mm

☐ Per i codici prodotto consultare il listino prezzi
^{EN} Please see price list for product codes

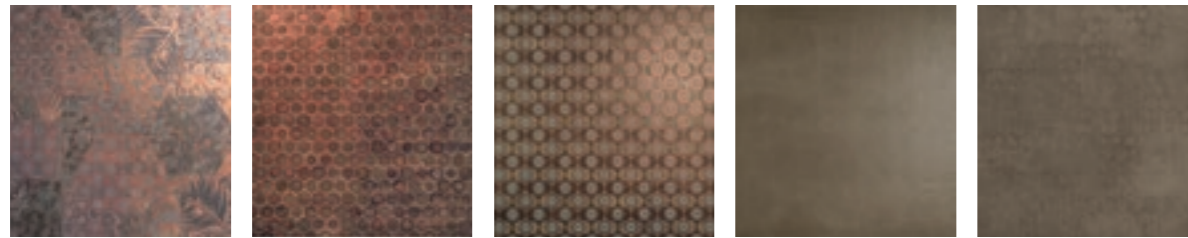
Luci di Venezia



Venezia Ice Rialto Ice Onde Ice Cristallo Ice Riflesso Ice



Venezia White Rialto White Onde White Cristallo White Riflesso White



Venezia Mud Rialto Mud Onde Mud Cristallo Mud Riflesso Mud



Venezia Red Rialto Red Onde Red Cristallo Red Riflesso Red

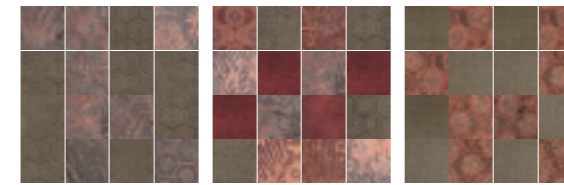
Intreccio 7,2



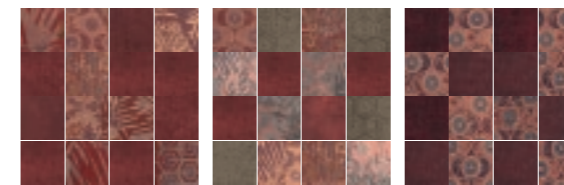
Luci + Riflesso Ice Luci + Riflesso Ice | White Cristallo + Onde Ice



Luci + Riflesso White Luci + Riflesso Ice | White Cristallo + Onde White

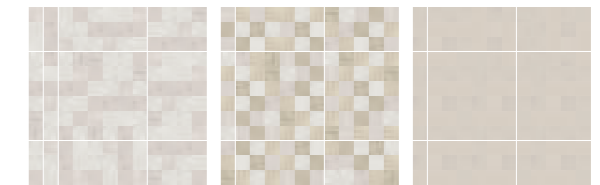


Luci + Riflesso Mud Luci + Riflesso Mud | Red Cristallo + Onde Mud

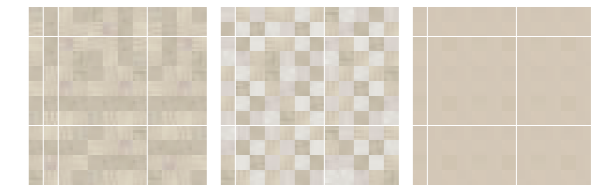


Luci + Riflesso Red Luci + Riflesso Mud | Red Cristallo + Onde Red

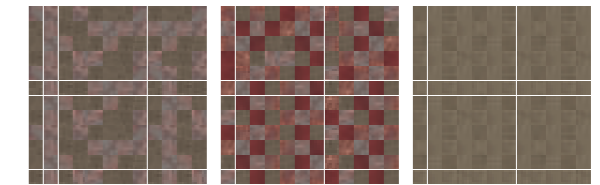
Intreccio small



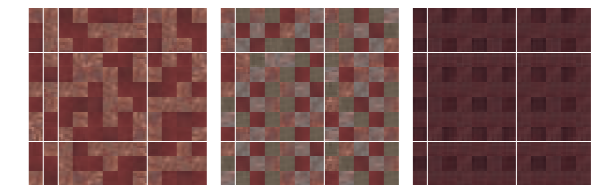
Luci + Riflesso Ice Luci + Riflesso Ice | White Cristallo Ice



Luci + Riflesso White Luci + Riflesso Ice | White Cristallo White



Luci + Riflesso Mud Luci + Riflesso Mud | Red Cristallo Mud

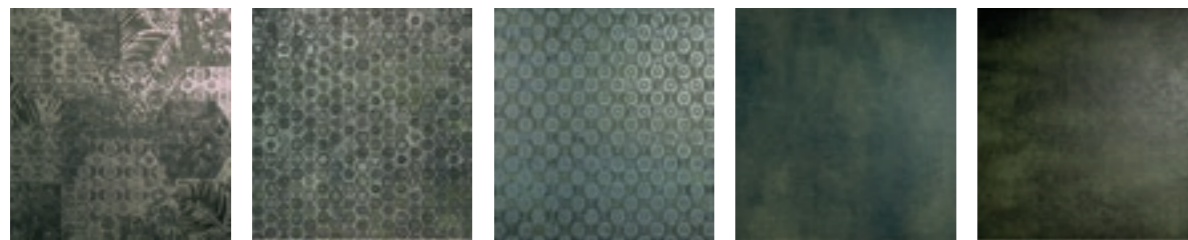


Luci + Riflesso Red Luci + Riflesso Mud | Red Cristallo Red

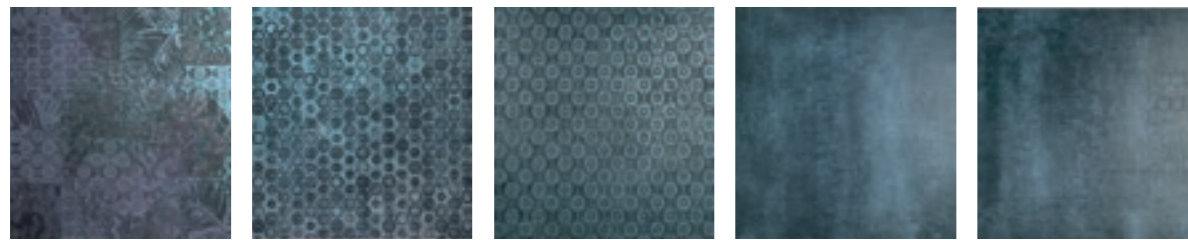
Luci di Venezia



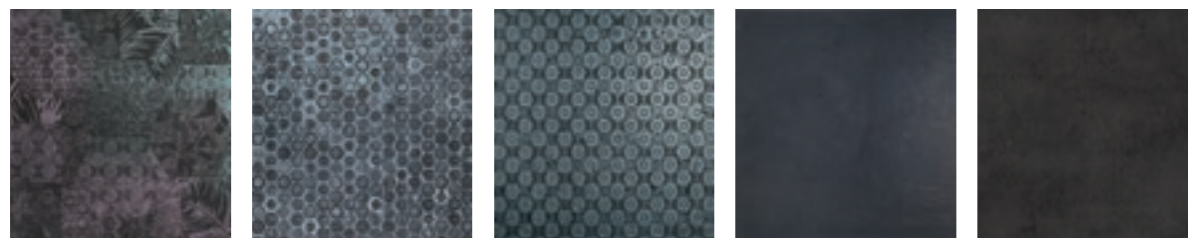
Venezia Grey Rialto Grey Onde Grey Cristallo Grey Riflesso Grey



Venezia Green Rialto Green Onde Green Cristallo Green Riflesso Green

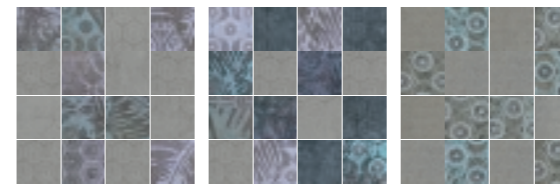


Venezia Blue Rialto Blue Onde Blue Cristallo Blue Riflesso Blue

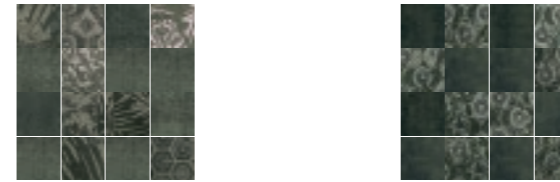


Venezia Graphite Rialto Graphite Onde Graphite Cristallo Graphite Riflesso Graphite

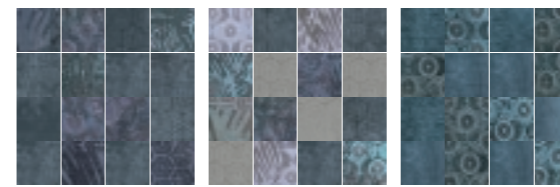
Intreccio 7,2



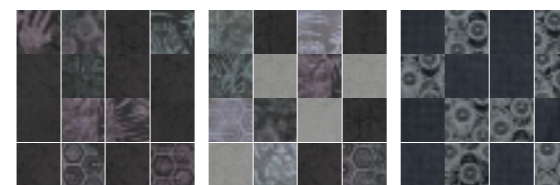
Luci + Riflesso Grey Luci + Riflesso Grey | Blue Cristallo + Onde Grey



Luci + Riflesso Green Cristallo + Onde Green

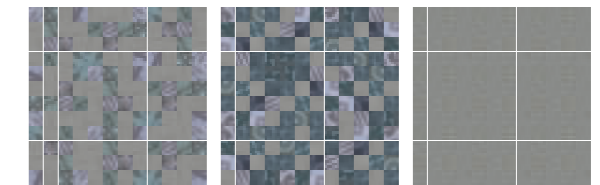


Luci + Riflesso Blue Luci + Riflesso Grey | Blue Cristallo + Onde Blue



Luci + Riflesso Graphite Luci + Riflesso Grey | Graphite Cristallo + Onde Graphite

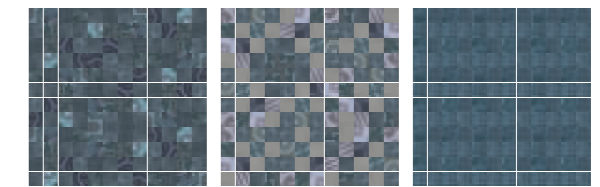
Intreccio small



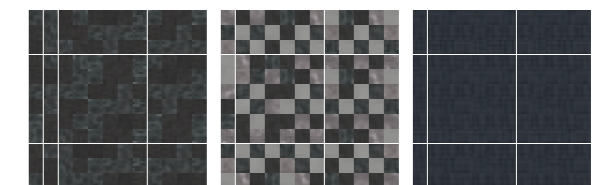
Luci + Riflesso Grey Luci + Riflesso Grey | Blue Cristallo Grey



Luci + Riflesso Green Cristallo Green



Luci + Riflesso Blue Luci + Riflesso Grey | Blue Cristallo Blue



Luci + Riflesso Graphite Luci + Riflesso Grey | Graphite Cristallo Graphite

Credits

Concept and art direction
dogtrot

Product design
Paola Navone
Sebastian Herkner
Guglielmo Poletti
Alissa + Nienke
Lex Pott
DB Studio

Photos
Concept image
dogtrot
Photography
Punto Immagine

Colour separation and print
Grafiche Antiga

March 2019

Thanks to
Baxter, Agape, Novamobili

Decoratori Bassanesi srl

Sede operativa - Via Vallina Orticella, 48 | 31030 Borso del Grappa (TV)

Sede legale - Largo Perlasca, 19 | 36061 Bassano del Grappa (VI)

+39 0423 910076 | info@decoratoribassanesi.it

www.decoratoribassanesi.it