

VULCANIKA

PROVENZA





CONTEMPORARY HARMONIES | KITCHEN

- Grey Lavika Nat. Rett. 60x120 - 23^{5/8}"x47^{1/4}"
- Grey Lavika Nat. Rett. 60x60 - 23^{5/8}"x23^{5/8}"
- Grey Lavika Nat. Rett. 30x60 - 11^{13/16}"x23^{5/8}"
- Verde Raku Rett. 60x60 - 23^{5/8}"x23^{5/8}"
- Verde Raku Rett. 30x60 - 11^{13/16}"x23^{5/8}"
- Verde Raku Rett. 10x60 - 3^{15/16}"x23^{5/8}"
- Ocra Raku Rett. 10x60 - 3^{15/16}"x23^{5/8}"

NATURALI EVOLUZIONI

VULCANIKA MOOD

Una collezione di pietra vulcanica naturale e la stessa pietra smaltata con effetti Raku. Ideati in diversi formati, questi materiali abbinati permettono infinite combinazioni e possibilità di posa, e creano una forza espressiva di grande potenza e raffinatezza, declinata in cinque colori matt da combinare con sei nuance colorate e lucenti. Le tonalità opache della pietra vulcanica e quelle cangianti della Raku possono essere unite in una inesauribile varietà di soluzioni, conferendo all'ambiente un'atmosfera di contrasti e armonia.

I decori tridimensionali regalano ricchezza di movimento, adatti per spazi sorprendenti e dalle atmosfere raffinate.

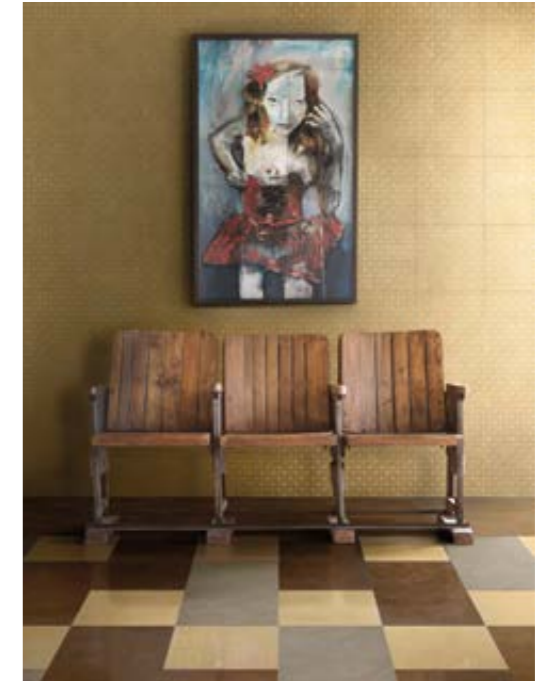
NATURAL EVOLUTIONS VULCANIKA MOOD

A collection of natural volcanic stone, and the same stone with a Raku look glaze. Conceived in a variety of sizes, these combined materials provide infinite combinations and installation potentials, and create an expressive force of great power and refinement, declined in five matt colours for mixing with six glossy colourful shades. The matt tones of the volcanic stone and the iridescence of the Raku can be combined in an endless variety of solutions, giving the design scheme an atmosphere of contrasts and harmony.

The three-dimensional decors generate rich variation, suitable for surprising spaces and refined moods.



CONTEMPORARY Harmonies pag. 4



High MODERNISM pag. 18



CLASSIC Comfort pag. 32



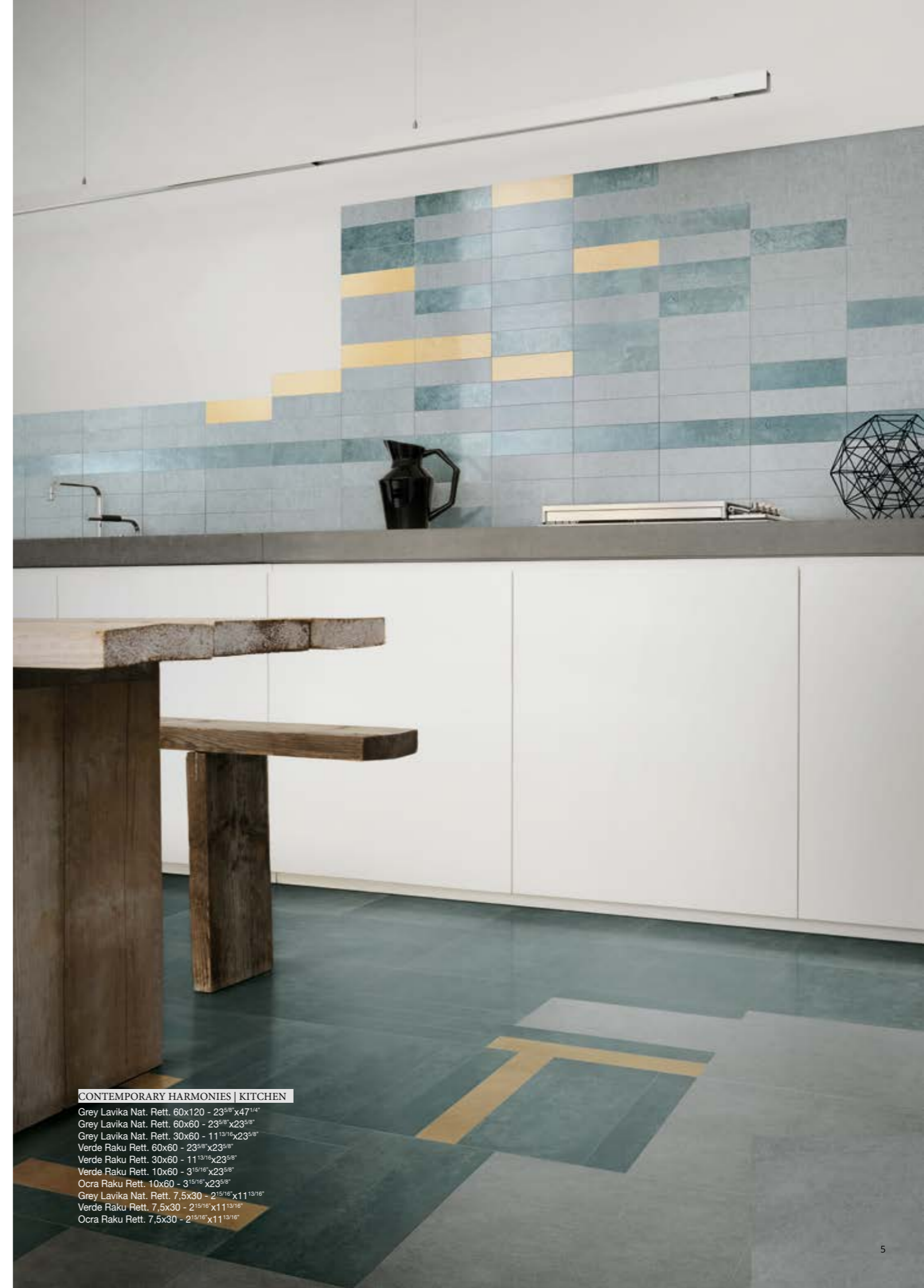
CONTRACT Spaces pag. 40

CONTEMPORARY HARMONIES

VULCANIKA MOOD

Armonie di colori avvolgono l'abitare contemporaneo e si inseriscono negli spazi di uso quotidiano. Le tonalità e le geometrie rendono gli ambienti unici e confortevoli. La ricchezza dei formati è perfetta per ogni ambiente.

Harmonies of colour embrace the home and take their place in the locations of everyday life. The shades and geometric forms create unique, comfortable interiors. A wealth of sizes, perfect for every room.



CONTEMPORARY HARMONIES | KITCHEN

- Grey Lavika Nat. Rett. 60x120 - 23^{5/8}"x47^{1/4}"
- Grey Lavika Nat. Rett. 60x60 - 23^{5/8}"x23^{5/8}"
- Grey Lavika Nat. Rett. 30x60 - 11^{13/16}"x23^{5/8}"
- Verde Raku Rett. 60x60 - 23^{5/8}"x23^{5/8}"
- Verde Raku Rett. 30x60 - 11^{13/16}"x23^{5/8}"
- Verde Raku Rett. 10x60 - 3^{15/16}"x23^{5/8}"
- Ocra Raku Rett. 10x60 - 3^{15/16}"x23^{5/8}"
- Grey Lavika Nat. Rett. 7,5x30 - 2^{15/16}"x11^{13/16}"
- Verde Raku Rett. 7,5x30 - 2^{15/16}"x11^{13/16}"
- Ocra Raku Rett. 7,5x30 - 2^{15/16}"x11^{13/16}"



CONTEMPORARY HARMONIES | KITCHEN

- Grey Lavika Nat. Rett. 60x120 - 23^{5/8}"x47^{1/4}"
- Grey Lavika Nat. Rett. 60x60 - 23^{5/8}"x23^{5/8}"
- Grey Lavika Nat. Rett. 30x60 - 11^{13/16}"x23^{5/8}"
- Verde Raku Rett. 60x60 - 23^{5/8}"x23^{5/8}"
- Verde Raku Rett. 30x60 - 11^{13/16}"x23^{5/8}"
- Verde Raku Rett. 10x60 - 3^{15/16}"x23^{5/8}"
- Ocra Raku Rett. 10x60 - 3^{15/16}"x23^{5/8}"
- Grey Lavika Nat. Rett. 7,5x30 - 2^{15/16}"x11^{13/16}"
- Verde Raku Rett. 7,5x30 - 2^{15/16}"x11^{13/16}"
- Ocra Raku Rett. 7,5x30 - 2^{15/16}"x11^{13/16}"



CONTEMPORARY HARMONIES | BATHROOM

Black Lavika Nat. Rett. 60x60 - 23^{5/8}"x23^{5/8}"
Verde Raku Rett. 30x60 - 11^{13/16}"x23^{5/8}"
Verde Raku Rett. Kaptur 30x60 - 11^{13/16}"x23^{5/8}"



CONTEMPORARY HARMONIES | BEDROOM

Black Lavika Nat. Rett. 30x60 - 11^{13/16} x 23^{5/8}

Nero Raku Rett. 30x60 - 11^{13/16} x 23^{5/8}

Verde Raku Rett. Rikamo 30x30 - 11^{13/16} x 11^{13/16}



CONTEMPORARY HARMONIES | LIVING

- White Lavika Nat. Rett. 90x90 - 35^{7/16}"x35^{7/16}"
- Grey Lavika Nat. Rett. 90x90 - 35^{7/16}"x35^{7/16}"
- Grey Lavika Nat. Rett. 45x90 - 17^{11/16}"x35^{7/16}"
- Grey Lavika Nat. Rett. 30x60 - 11^{13/16}"x23^{5/8}"
- Bianco Raku Rett. Karato 30x30 - 11^{13/16}"x11^{13/16}"
- Nero Raku Rett. Karato 30x30 - 11^{13/16}"x11^{13/16}"
- Bianco Raku Rett. 10x60 - 3^{15/16}"x23^{5/8}"
- Verde Raku Rett. 10x60 - 3^{15/16}"x23^{5/8}"
- Nero Raku Rett. 10x60 - 3^{15/16}"x23^{5/8}"
- Nero Raku Rett. 30x60 - 11^{13/16}"x23^{5/8}"



CONTEMPORARY HARMONIES | LIVING

Grey Lavika Nat. Rett. 90x90 - 35^{7/16}"x35^{7/16}"
Grey Lavika Nat. Rett. 45x90 - 17^{11/16}"x35^{7/16}"
White Lavika Nat. Rett. 90x90 - 35^{7/16}"x35^{7/16}"



Grey Lavika Nat. Rett. 90x90 - 35^{7/16}"x35^{7/16}"
Grey Lavika Nat. Rett. 45x90 - 17^{11/16}"x35^{7/16}"
White Lavika Nat. Rett. 90x90 - 35^{7/16}"x35^{7/16}"
Bianco Raku Rett. Link 19,6x34,2 - 7^{11/16}"x13^{7/16}"



CONTEMPORARY HARMONIES | LIVING

Grey Lavika Nat. Rett. 60x120 - 23^{5/8} x 47^{1/4}"
White Lavika Nat. Rett. 60x60 - 23^{5/8} x 23^{5/8}"
Bianco Raku Rett. 60x60 - 23^{5/8} x 23^{5/8}"
Grey Lavika Nat. Rett. 30x60 - 11^{13/16} x 23^{5/8}"
Bianco Raku Rett. 30x60 - 11^{13/16} x 23^{5/8}"
Verde Raku Rett. 30x60 - 11^{13/16} x 23^{5/8}"
Nero Raku Rett. 30x60 - 11^{13/16} x 23^{5/8}"
Ruggine Raku Rett. 30x60 - 11^{13/16} x 23^{5/8}"

HIGH MODERNISM VULCANIKA MOOD

Cromie lucide e opache applicate a formati diversi per creare ambienti di grande fascino. I colori e le potenzialità compositive della serie rendono possibili applicazioni eleganti e raffinate. Il valore di un ambiente moderno è quello di essere sempre attuale

Gloss and matt colours applied to different sizes for interior designs of immense beauty. The series features colours and compositional potentials that enable elegant, sophisticated applications. The advantage of a modern interior is that it is always in the latest fashion. pellentesque. Nullam quis enim ut massa faucibus venenatis ut eu risus.



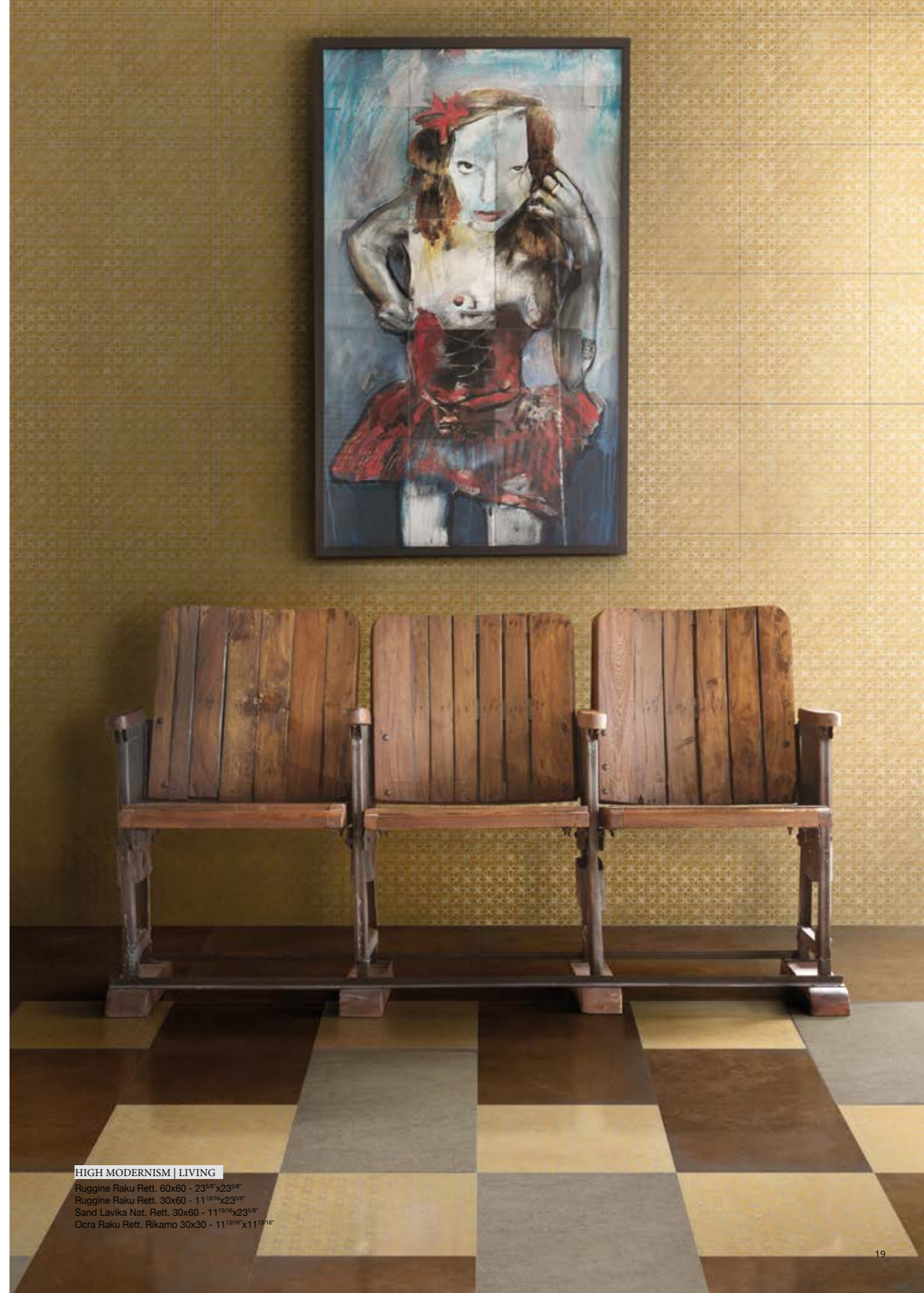
LIVING



BATHROOM



KITCHEN



HIGH MODERNISM | LIVING

Ruggine Raku Rett. 60x60 - 23^{5/8}"x23^{5/8}"
 Ruggine Raku Rett. 30x60 - 11^{13/16}"x23^{5/8}"
 Sand Lavika Nat. Rett. 30x60 - 11^{13/16}"x23^{5/8}"
 Ocra Raku Rett. Rikamo 30x30 - 11^{13/16}"x11^{13/16}"



HIGH MODERNISM | LIVING

Ruggine Raku Rett. 60x60 - 23⁵/₈"x23⁵/₈"
Ruggine Raku Rett. 30x60 - 11¹³/₁₆"x23⁵/₈"
Ruggine Raku Rett. 10x60 - 3¹⁵/₁₆"x23⁵/₈"



Ocra Raku Rett. 10x60 - 3¹⁵/₁₆"x23⁵/₈"
Verde Raku Rett. 10x60 - 3¹⁵/₁₆"x23⁵/₈"



Ruggine Raku Rett. 60x60 - 23⁵/₈"x23⁵/₈"
Ruggine Raku Rett. 30x60 - 11¹³/₁₆"x23⁵/₈"
Ruggine Raku Rett. 10x60 - 3¹⁵/₁₆"x23⁵/₈"



HIGH MODERNISM | LIVING

Sand Lavika Nat. Rett. 60x120 - 23^{5/8} x 47^{1/4}"
Ocra Raku Rett. 10x60 - 3^{15/16} x 23^{5/8}"
Verde Raku Rett. 10x60 - 3^{15/16} x 23^{5/8}"



RELAX AVANTGARDE | BATHROOM

Blu Raku Rett. Karato 30x30 - 11^{13/16}"x11^{13/16}"
Black Lavika Nat. Rett. 60x120 - 23^{5/8}"x47^{1/4}"
Blu Raku Link 19,6x34,2 - 7^{11/16}"x13^{7/16}"



Blu Raku Rett. Karato 30x30 - 11^{13/16}"x11^{13/16}"



HIGH MODERNISM | LIVING

Grey Lavika Nat. Rett. 60x60 - 23^{5/8}"x23^{5/8}"

Grey Lavika Nat. Rett. 30x60 - 11^{13/16}"x23^{5/8}"

Verde Raku Rett. 60x60 - 23^{5/8}"x23^{5/8}"

Verde Raku Rett. 30x60 - 11^{13/16}"x23^{5/8}"

Verde Raku Rett. 10x60 - 3^{15/16}"x23^{5/8}"



HIGH MODERNISM | KITCHEN

Black Lavika Nat. Rett. 60x60 - 23^{5/8}"x23^{5/8}"
Nero Raku Rett. Kaptur 30x60 - 11^{13/16}"x23^{5/8}"



Black Lavika Nat. Rett. 60x60 - 23^{5/8}"x23^{5/8}"
Nero Raku Rett. Kaptur 30x60 - 11^{13/16}"x23^{5/8}"

CLASSIC COMFORT VULCANIKA MOOD

Tecnica e colore sono importanti nell'arte come nel vivere quotidiano.
La tensione continua verso la perfezione e la bellezza è data dal colore
giusto adeguato alla forma.

Technology and colour are as important in art as in everyday life.
The continuous striving for perfection and beauty demands
the right colour for each shape.



CLASSIC COMFORT | LIVING
Ocra Raku Rett. 7,5x30 - 2^{15/16}"x11^{13/16}"



CLASSIC COMFORT | LIVING

Taupe Lavika Nat. Rett. 60x120 - 23^{5/8}"x47^{1/4}"



Regoli Fumo-Latte-Lavanda 7,5x30 - 2^{15/16}"x11^{13/16}"



CLASSIC COMFORT | BATHROOM

Bianco Raku Rett. 10x60 - 3^{15/16}"x23^{5/8}"

Nero Raku Rett. 10x60 - 3^{15/16}"x23^{5/8}"

Regoli Fumo-Latte-Lavanda 7,5x30 - 2^{15/16}"x11^{13/16}"



CLASSIC COMFORT | KITCHEN

Sand Lavika Nat. Rett. 60x60 - 23^{5/8}"x23^{5/8}"
Ocra Raku Rett. 60x60 - 23^{5/8}"x23^{5/8}"
Ocra Raku Rett. Karato 30x30 - 11^{13/16}"x11^{13/16}"

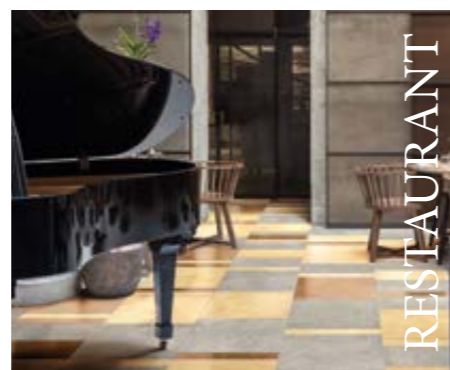


Ocra Raku Rett. 60x60 - 23^{5/8}"x23^{5/8}"
Ocra Raku Rett. Karato 30x30 - 11^{13/16}"x11^{13/16}"

CONTRACT SPACES VULCANIKA MOOD

Il sobrio minimalismo di colori, formati e superfici è perfetto per ogni tipo di ambiente.
La funzionalità e l'affidabilità sono il prodotto dell'esperienza creativa.
Le tonalità delicate e le geometrie pulite sono studiate per essere evocative.

The tasteful minimalism of colours, sizes and surfaces is perfect for every kind of interior.
Practicality and reliability are grounded in creative experience.
The subtle shades and simple forms are designed to be evocative.



CONTRACT SPACES | CAFÈ

Grey Lavika Nat. Rett. 60x120 - 23^{5/8}"x47^{1/4}"
Blu Raku Rett. 7,5x30 - 2^{15/16}"x1^{13/16}"



CONTRACT SPACES | CAFÉ

Grey Lavika Nat. Rett. 60x120 - 23^{5/8}"x47^{1/4}"
Blu Raku Rett. 7,5x30 - 2^{15/16}"x11^{13/16}"



Link Ruggine Raku 19,6x34,2 - 7^{11/16}"x13^{7/16}"



CONTRACT SPACES | RESTAURANT

- Taupe Lavika Nat. Rett. 60x60 - 23^{5/8}"x23^{5/8}"
- Ocra Raku Rett. 60x60 - 23^{5/8}"x23^{5/8}"
- Ruggine Raku Rett. 60x60 - 23^{5/8}"x23^{5/8}"
- Taupe Lavika Nat. Rett. 30x60 - 11^{13/16}"x23^{5/8}"
- Ocra Raku Rett. 30x60 - 11^{13/16}"x23^{5/8}"
- Ruggine Raku Rett. 30x60 - 11^{13/16}"x23^{5/8}"
- Ocra Raku Rett. 10x60 - 3^{15/16}"x23^{5/8}"
- Ruggine Raku Rett. 10x60 - 3^{15/16}"x23^{5/8}"



CONTRACT SPACES | BOUTIQUE

Black Lavika Rett. 90x90 - 235^{7/16} x 35^{7/16}
Ocra Raku Rett. 10x60 - 3^{15/16} x 23^{5/8}
Nero Raku Rett. 10x60 - 3^{15/16} x 23^{5/8}
Bianco Raku Rett. 10x60 - 3^{15/16} x 23^{5/8}
Ruggine Raku Rett. 10x60 - 3^{15/16} x 23^{5/8}



CONTRACT SPACES | BOUTIQUE

Bianco Raku Link 19,6x34,2 - 7¹¹/₁₆"x13⁷/₁₆"
Blu Raku Link 19,6x34,2 - 7¹¹/₁₆"x13⁷/₁₆"
Nero Raku Link 19,6x34,2 - 7¹¹/₁₆"x13⁷/₁₆"
Verde Raku Link 19,6x34,2 - 7¹¹/₁₆"x13⁷/₁₆"



Bianco Raku Link 19,6x34,2 - 7¹¹/₁₆"x13⁷/₁₆"
Blu Raku Link 19,6x34,2 - 7¹¹/₁₆"x13⁷/₁₆"
Nero Raku Link 19,6x34,2 - 7¹¹/₁₆"x13⁷/₁₆"
Verde Raku Link 19,6x34,2 - 7¹¹/₁₆"x13⁷/₁₆"

VULCANIKA LAVIKA

VULCANIKA RAKU

60x120 - 23⁵/₈"x47¹/₄" | 60x60 - 23⁵/₈"x23⁵/₈" | 30x60 - 11¹³/₁₆"x23⁵/₈" | 7,5x30 - 2¹⁵/₁₆"x11¹³/₁₆"
 90x90 - 35⁷/₁₆"x35⁷/₁₆" | 45x90 - 17¹¹/₁₆"x35⁷/₁₆"

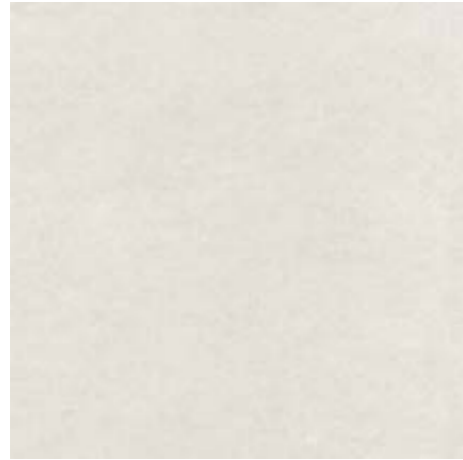
60x60 - 23⁵/₈"x23⁵/₈" | 30x60 - 11¹³/₁₆"x23⁵/₈" | 10x60 - 3¹⁵/₁₆"x23⁵/₈" | 7,5x30 - 2¹⁵/₁₆"x11¹³/₁₆"

						KAPTURE	RIKAMO	KARATO	LINK	
TAUPE										RUGGINE
SAND										OCRA
WHITE										BIANCO
										NERO
GREY										BLU
BLACK										VERDE

WHITE VULCANIKA LAVIKA

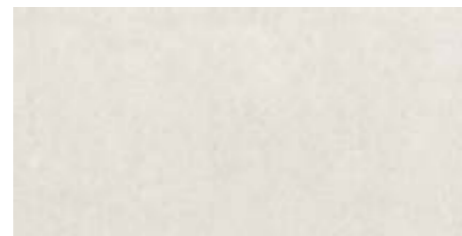
FORMATI | SIZES | FORMATS | FORMATE | TAMANOS | ФОРМАТЫ

Si consiglia la posa con fuga 2 mm. | Laying with a 2 mm-joint is recommended.



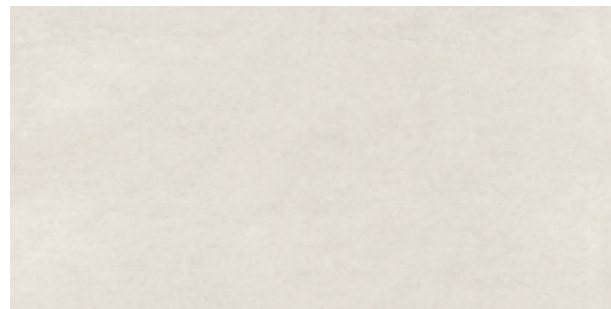
90x90 - 35⁷/₁₆"x35⁷/₁₆"
EFP8 White Lavika Nat. Rett.

91



45x90 - 17¹¹/₁₆"x35⁷/₁₆"
EFQE White Lavika Nat. Rett.

79



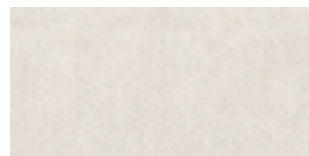
60x120 - 23⁵/₈"x47¹/₄"
EFPT White Lavika Nat. Rett.

87



60x60 - 23⁵/₈"x23⁵/₈"
EFPY White Lavika Nat. Rett.

66



30x60 - 11¹³/₁₆"x23⁵/₈"
EFP3 White Lavika Nat. Rett.

57



7,5x30 - 2¹⁵/₁₆"x11¹³/₁₆"
EFSE White Lavika Nat. Rett.

88

DECORI | DECORS | DECORS | DEKORE | DECORADOS | ДЕКОРЫ

LISTELLI SFALSATI*



30x60 - 11¹³/₁₆"x23⁵/₈"
EF5Q White Lavika Nat.

107

MOSAICO 3x3*
Tessera 2,8x2,8 | Chip 1¹/₈"x1¹/₈"



30x30 - 11¹³/₁₆"x11¹³/₁₆"
EF5K White Lavika Nat.

137

* Su rete in fibra | On fibre mesh backing

SAND VULCANIKA LAVIKA

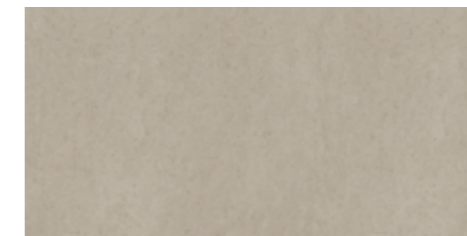
FORMATI | SIZES | FORMATS | FORMATE | TAMANOS | ФОРМАТЫ

Si consiglia la posa con fuga 2 mm. | Laying with a 2 mm-joint is recommended.



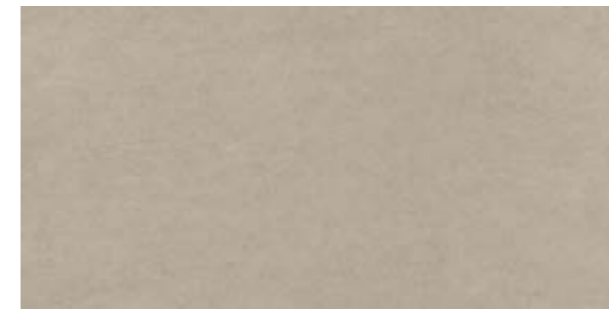
90x90 - 35⁷/₁₆"x35⁷/₁₆"
EFP9 Sand Lavika Nat. Rett.

91



45x90 - 17¹¹/₁₆"x35⁷/₁₆"
EFQF Sand Lavika Nat. Rett.

79



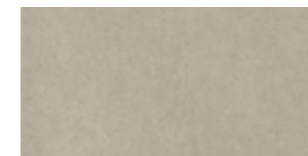
60x120 - 23⁵/₈"x47¹/₄"
EFPY Sand Lavika Nat. Rett.

87



60x60 - 23⁵/₈"x23⁵/₈"
EFPZ Sand Lavika Nat. Rett.

66



30x60 - 11¹³/₁₆"x23⁵/₈"
EFP4 Sand Lavika Nat. Rett.

57

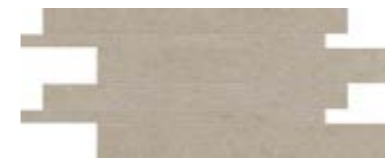


7,5x30 - 2¹⁵/₁₆"x11¹³/₁₆"
EF5F Sand Lavika Nat. Rett.

88

DECORI | DECORS | DECORS | DEKORE | DECORADOS | ДЕКОРЫ

LISTELLI SFALSATI*



30x60 - 11¹³/₁₆"x23⁵/₈"
EF5R Sand Lavika Nat.

107

MOSAICO 3x3*
Tessera 2,8x2,8 | Chip 1¹/₈"x1¹/₈"



30x30 - 11¹³/₁₆"x11¹³/₁₆"
EF5L Sand Lavika Nat.

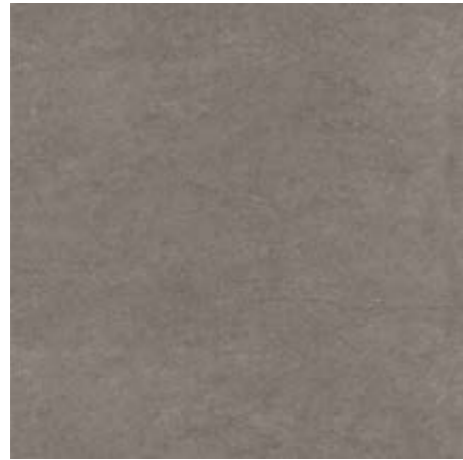
137

* Su rete in fibra | On fibre mesh backing

TAUPE **VULCANIKA** LAVIKA

FORMATI | SIZES | FORMATS | FORMATE | TAMANOS | ФОРМАТЫ

Si consiglia la posa con fuga 2 mm. | Laying with a 2 mm-joint is recommended.



90x90 - 35^{7/16}"x35^{7/16}"
EFQA Taupe Lavika Nat. Rett.

91



45x90 - 17^{11/16}"x35^{7/16}"
EFQG Taupe Lavika Nat. Rett.

79



60x120 - 23^{5/8}"x47^{1/4}"
EFPV Taupe Lavika Nat. Rett.

87



60x60 - 23^{5/8}"x23^{5/8}"
EFPO Taupe Lavika Nat. Rett.

66



30x60 - 11^{13/16}"x23^{5/8}"
EFP5 Taupe Lavika Nat. Rett.

57



7,5x30 - 2^{15/16}"x11^{13/16}"
EF5G Taupe Lavika Nat. Rett.

88

DECORI | DECORS | DECORS | DEKORE | DECORADOS | ДЕКОРЫ

LISTELLI SFALSATI*



30x60 - 11^{13/16}"x23^{5/8}"
EF5S Taupe Lavika Nat.

107

MOSAICO 3x3*
Tessera 2,8x2,8 | Chip 1^{1/8}"x1^{1/8}"



30x30 - 11^{13/16}"x11^{13/16}"
EF5M Taupe Lavika Nat.

137

* Su rete in fibra | On fibre mesh backing

GREY **VULCANIKA** LAVIKA

FORMATI | SIZES | FORMATS | FORMATE | TAMANOS | ФОРМАТЫ

Si consiglia la posa con fuga 2 mm. | Laying with a 2 mm-joint is recommended.



90x90 - 35^{7/16}"x35^{7/16}"
EFQC Grey Lavika Nat. Rett.

91



45x90 - 17^{11/16}"x35^{7/16}"
EFQH Grey Lavika Nat. Rett.

79



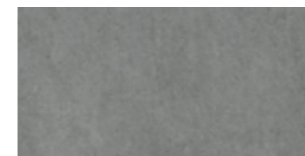
60x120 - 23^{5/8}"x47^{1/4}"
EFPW Grey Lavika Nat. Rett.

87



60x60 - 23^{5/8}"x23^{5/8}"
EFP1 Grey Lavika Nat. Rett.

66



30x60 - 11^{13/16}"x23^{5/8}"
EFP6 Grey Lavika Nat. Rett.

57



7,5x30 - 2^{15/16}"x11^{13/16}"
EF5H Grey Lavika Nat. Rett.

88

DECORI | DECORS | DECORS | DEKORE | DECORADOS | ДЕКОРЫ

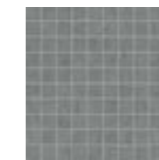
LISTELLI SFALSATI*



30x60 - 11^{13/16}"x23^{5/8}"
EF5T Grey Lavika Nat.

107

MOSAICO 3x3*
Tessera 2,8x2,8 | Chip 1^{1/8}"x1^{1/8}"



30x30 - 11^{13/16}"x11^{13/16}"
EF5N Grey Lavika Nat.

137

* Su rete in fibra | On fibre mesh backing

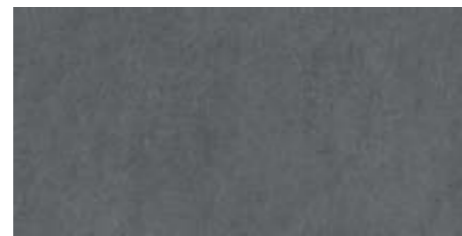
BLACK VULCANIKA LAVIKA

FORMATI | SIZES | FORMATS | FORMATE | TAMANOS | ФОРМАТЫ

Si consiglia la posa con fuga 2 mm. | Laying with a 2 mm-joint is recommended.



90x90 - 35^{7/16}"x35^{7/16}"
EFQD Black Lavika Nat. Rett. **91**



45x90 - 17^{11/16}"x35^{7/16}"
EFQJ Black Lavika Nat. Rett. **79**



60x120 - 23^{5/8}"x47^{1/4}"
EFPX Black Lavika Nat. Rett. **87**



60x60 - 23^{5/8}"x23^{5/8}"
EFP2 Black Lavika Nat. Rett. **66**



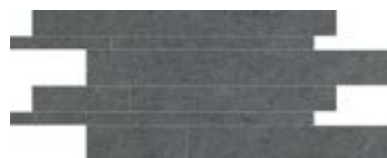
30x60 - 11^{13/16}"x23^{5/8}"
EFP7 Black Lavika Nat. Rett. **57**



7,5x30 - 2^{15/16}"x11^{13/16}"
EF5J Black Lavika Nat. Rett. **88**

DECORI | DECORS | DECORS | DEKORE | DECORADOS | ДЕКОРЫ

LISTELLI SFALSATI*



30x60 - 11^{13/16}"x23^{5/8}"
EF5U Black Lavika Nat. **107**

MOSAICO 3x3*
Tessera 2,8x2,8 | Chip 1^{1/8}"x1^{1/8}"



30x30 - 11^{13/16}"x11^{13/16}"
EF5P Black Lavika Nat. **137**

* Su rete in fibra | On fibre mesh backing

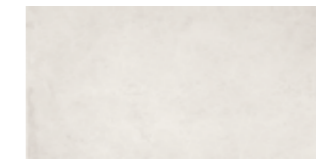
BIANCO VULCANIKA RAKU

FORMATI | SIZES | FORMATS | FORMATE | TAMANOS | ФОРМАТЫ

Si consiglia la posa con fuga 2 mm. | Laying with a 2 mm-joint is recommended.



60x60 - 23^{5/8}"x23^{5/8}"
EFQK Bianco Raku Rett. **66**



30x60 - 11^{13/16}"x23^{5/8}"
EFQR Bianco Raku Rett. **57**



10x60 - 3^{15/16}"x23^{5/8}"
EF5V Bianco Raku Rett. **82**



7,5x30 - 2^{15/16}"x11^{13/16}"
EF6L Bianco Raku Rett. **88**

DECORI | DECORS | DECORS | DEKORE | DECORADOS | ДЕКОРЫ

KAPTUR



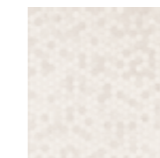
30x60 - 11^{13/16}"x23^{5/8}"
EFQX Bianco Raku Rett. **58**

RIKAMO



30x30 - 11^{13/16}"x11^{13/16}"
EF86 Bianco Raku Rett. **107**

KARATO



30x30 - 11^{13/16}"x11^{13/16}"
EF7U Bianco Raku Rett. **107**

LINK*



19,6x34,2 - 7^{11/16}"x13^{7/16}"
EF7T Bianco Raku **152**

MOSAICO 3x3*
Tessera 2,8x2,8 | Chip 1^{1/8}"x1^{1/8}"



30x30 - 11^{13/16}"x11^{13/16}"
EFW5 Bianco Raku **137**

* Su rete in fibra | On fibre mesh backing

OCRA **VULCANIKA** RAKU

FORMATI | SIZES | FORMATS | FORMATE | TAMANOS | ФОРМАТЫ

Si consiglia la posa con fuga 2 mm. | Laying with a 2 mm-joint is recommended.



60x60 - 23⁵/₈"x23⁵/₈"
EFQL Ocra Raku Rett. **66**



30x60 - 11¹³/₁₆"x23⁵/₈"
EFQS Ocra Raku Rett. **57**



10x60 - 3¹⁵/₁₆"x23⁵/₈"
EF5W Ocra Raku Rett. **82**



7,5x30 - 2¹⁵/₁₆"x11¹³/₁₆"
EF6M Ocra Raku Rett. **88**

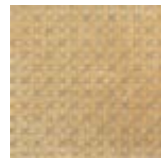
DECORI | DECORS | DECORS | DEKORE | DECORADOS | ДЕКОРЫ

KAPTUR



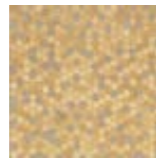
30x60 - 11¹³/₁₆"x23⁵/₈"
EFQY Ocra Raku Rett. **58**

RIKAMO



30x30 - 11¹³/₁₆"x11¹³/₁₆"
EF87 Ocra Raku Rett. **107**

KARATO



30x30 - 11¹³/₁₆"x11¹³/₁₆"
EF7V Ocra Raku Rett. **107**

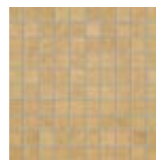
LINK*



19,6x34,2 - 7¹¹/₁₆"x13⁷/₁₆"
EFW0 Ocra Raku **152**

MOSAICO 3x3*

Tessera 2,8x2,8 | Chip 1¹/₈"x1¹/₈"



30x30 - 11¹³/₁₆"x11¹³/₁₆"
EFW6 Ocra Raku **137**

* Su rete in fibra | On fibre mesh backing

RUGGINE **VULCANIKA** RAKU

FORMATI | SIZES | FORMATS | FORMATE | TAMANOS | ФОРМАТЫ

Si consiglia la posa con fuga 2 mm. | Laying with a 2 mm-joint is recommended.



60x60 - 23⁵/₈"x23⁵/₈"
EFQM Ruggine Raku Rett. **66**



30x60 - 11¹³/₁₆"x23⁵/₈"
EFQT Ruggine Raku Rett. **57**



10x60 - 3¹⁵/₁₆"x23⁵/₈"
EF67 Ruggine Raku Rett. **82**



7,5x30 - 2¹⁵/₁₆"x11¹³/₁₆"
EF6N Ruggine Raku Rett. **88**

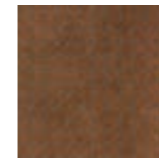
DECORI | DECORS | DECORS | DEKORE | DECORADOS | ДЕКОРЫ

KAPTUR



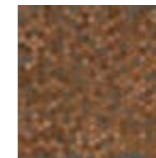
30x60 - 11¹³/₁₆"x23⁵/₈"
EFQZ Ruggine Raku Rett. **58**

RIKAMO



30x30 - 11¹³/₁₆"x11¹³/₁₆"
EF88 Ruggine Raku Rett. **107**

KARATO



30x30 - 11¹³/₁₆"x11¹³/₁₆"
EF7W Ruggine Raku Rett. **107**

LINK*



19,6x34,2 - 7¹¹/₁₆"x13⁷/₁₆"
EFW1 Ruggine Raku **152**

MOSAICO 3x3*

Tessera 2,8x2,8 | Chip 1¹/₈"x1¹/₈"



30x30 - 11¹³/₁₆"x11¹³/₁₆"
EFW7 Ruggine Raku **137**

* Su rete in fibra | On fibre mesh backing

VERDE VULCANIKA RAKU

FORMATI | SIZES | FORMATS | FORMATE | TAMANOS | ФОРМАТЫ

Si consiglia la posa con fuga 2 mm. | Laying with a 2 mm-joint is recommended.



60x60 - 23^{5/8}"x23^{5/8}"
EFQN Verde Raku Rett. **66**



30x60 - 11^{13/16}"x23^{5/8}"
EFQU Verde Raku Rett. **57**



10x60 - 3^{15/16}"x23^{5/8}"
EF68 Verde Raku Rett. **82**



7,5x30 - 2^{15/16}"x11^{13/16}"
EF6Z Verde Raku Rett. **88**

DECORI | DECORS | DECORS | DEKORE | DECORADOS | ДЕКОРЫ

KAPTUR



30x60 - 11^{13/16}"x23^{5/8}"
EFQ0 Verde Raku Rett. **58**

RIKAMO



30x30 - 11^{13/16}"x11^{13/16}"
EF89 Verde Raku Rett. **107**

KARATO



30x30 - 11^{13/16}"x11^{13/16}"
EF7X Verde Raku Rett. **107**

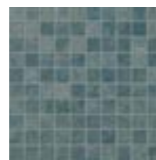
LINK*



19,6x34,2 - 7^{11/16}"x13^{7/16}"
EFW2 Verde Raku **152**

MOSAICO 3x3*

Tessera 2,8x2,8 | Chip 1^{1/8}"x1^{1/8}"



30x30 - 11^{13/16}"x11^{13/16}"
EFW8 Verde Raku **137**

* Su rete in fibra | On fibre mesh backing

BLU VULCANIKA RAKU

FORMATI | SIZES | FORMATS | FORMATE | TAMANOS | ФОРМАТЫ

Si consiglia la posa con fuga 2 mm. | Laying with a 2 mm-joint is recommended.



60x60 - 23^{5/8}"x23^{5/8}"
EFQP Blu Raku Rett. **66**



30x60 - 11^{13/16}"x23^{5/8}"
EFQV Blu Raku Rett. **57**



10x60 - 3^{15/16}"x23^{5/8}"
EF69 Blu Raku Rett. **82**



7,5x30 - 2^{15/16}"x11^{13/16}"
EF7M Blu Raku Rett. **88**

DECORI | DECORS | DECORS | DEKORE | DECORADOS | ДЕКОРЫ

KAPTUR



30x60 - 11^{13/16}"x23^{5/8}"
EFQ1 Blu Raku Rett. **58**

RIKAMO



30x30 - 11^{13/16}"x11^{13/16}"
EF8A Blu Raku Rett. **107**

KARATO



30x30 - 11^{13/16}"x11^{13/16}"
EF7Y Blu Raku Rett. **107**

LINK*



19,6x34,2 - 7^{11/16}"x13^{7/16}"
EFW3 Blu Raku **152**

MOSAICO 3x3*

Tessera 2,8x2,8 | Chip 1^{1/8}"x1^{1/8}"



30x30 - 11^{13/16}"x11^{13/16}"
EFW9 Blu Raku **137**

* Su rete in fibra | On fibre mesh backing

NERO VULCANIKA RAKU

FORMATI | SIZES | FORMATS | FORMATE | TAMANOS | ФОРМАТЫ

Si consiglia la posa con fuga 2 mm. | Laying with a 2 mm-joint is recommended.



60x60 - 23^{5/8}"x23^{5/8}"
EFQQ Nero Raku Rett. **66**



30x60 - 11^{13/16}"x23^{5/8}"
EFQW Nero Raku Rett. **57**



10x60 - 3^{15/16}"x23^{5/8}"
EF6J Nero Raku Rett. **82**



7,5x30 - 2^{15/16}"x11^{13/16}"
EF7S Nero Raku Rett. **88**

DECORI | DECORS | DECORS | DEKORE | DECORADOS | ДЕКОРЫ

KAPTUR



30x60 - 11^{13/16}"x23^{5/8}"
EFQ2 Nero Raku Rett. **58**

RIKAMO



30x30 - 11^{13/16}"x11^{13/16}"
EF8C Nero Raku Rett. **107**

KARATO



30x30 - 11^{13/16}"x11^{13/16}"
EF7Z Nero Raku Rett. **107**

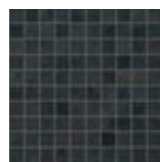
LINK*



19,6x34,2 - 7^{11/16}"x13^{7/16}"
EFW4 Nero Raku **152**

MOSAICO 3x3*

Tessera 2,8x2,8 | Chip 1^{1/8}"x1^{1/8}"



30x30 - 11^{13/16}"x11^{13/16}"
EFWA Nero Raku **137**

* Su rete in fibra | On fibre mesh backing

REGOLI

COLORI E FORMATI | COLOURS AND SIZES | COULEURS ET FORMATS | FARBEN UND FORMATE

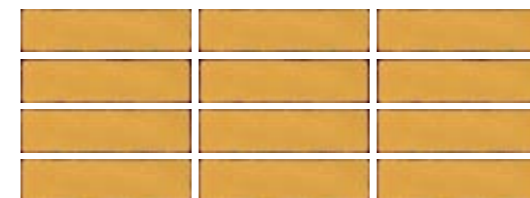
COLORES Y TAMANOS | ЦВЕТА И ФОРМАТЫ



7,5x30 - 2^{15/16}"x11^{13/16}"
EDS9 Latte **95**



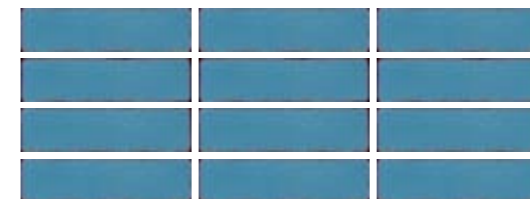
7,5x30 - 2^{15/16}"x11^{13/16}"
EDSH Fumo **95**



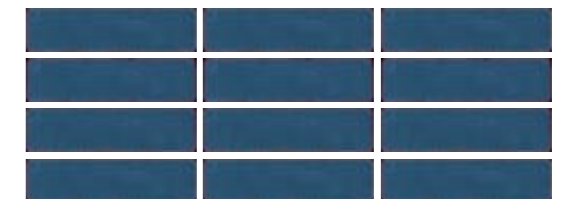
7,5x30 - 2^{15/16}"x11^{13/16}"
EDSD Odra **95**



7,5x30 - 2^{15/16}"x11^{13/16}"
EDSC Arancione **95**



7,5x30 - 2^{15/16}"x11^{13/16}"
EDSA Turchese **95**



7,5x30 - 2^{15/16}"x11^{13/16}"
EDSF Avio **95**



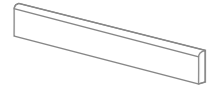
7,5x30 - 2^{15/16}"x11^{13/16}"
EDSE Petrolio **95**



7,5x30 - 2^{15/16}"x11^{13/16}"
EDSG Lavanda **95**

Si consiglia la posa con fuga 2 mm. - Laying with a 2 mm-joint is recommended. - Pose recommandée avec joints de 2 mm.
Es wird eine Fugenbreite von 2 mm empfohlen. - Se recomienda la colocación con juntas de 2 mm. - Рекомендуются укладка с швом 2 мм.

VULCANIKA LAVIKA



BATTISCOPA - SKIRTING
 7,5x60 - 2^{15/16}"x23^{5/8}"
EFWC White Lavika Nat. Rett.
EFWD Sand Lavika Nat. Rett.
EFWE Taupe Lavika Nat. Rett.
EFWF Grey Lavika Nat. Rett.
EFWG Black Lavika Nat. Rett.
 Pcs. Box. 15 - Ml. x Box 9

24



BATTISCOPA - SKIRTING
 4,6x90 - 1^{13/16}"x35^{7/16}"
EFWH White Lavika Nat. Rett.
EFWJ Sand Lavika Nat. Rett.
EFWK Taupe Lavika Nat. Rett.
EFWL Grey Lavika Nat. Rett.
EFWM Black Lavika Nat. Rett.
 Pcs. Box. 8 - Ml. x Box 7,20

25



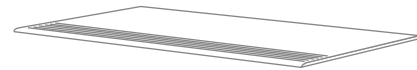
GRADONE - STEP
 33x120x3,2x3,2 - 12^{15/16}"x47^{1/4}"x1^{1/4}"x1^{1/4}"
EFWT White Lavika Nat. Rett.
EFWU Sand Lavika Nat. Rett.
EFWV Taupe Lavika Nat. Rett.
EFWW Grey Lavika Nat. Rett.
EFWX Black Lavika Nat. Rett.
 Pcs. Box. 2 - Ml. x Box 2,40

138



ANGOLARE DX / SX - CORNER TILE DX / SX
 33x120x3,2x3,2 - 12^{15/16}"x47^{1/4}"x1^{1/4}"x1^{1/4}"
EFWY / EFX3 White Lavika Nat. Rett.
EFWZ / EFX4 Sand Lavika Nat. Rett.
EFX0 / EFX5 Taupe Lavika Nat. Rett.
EFX1 / EFX6 Grey Lavika Nat. Rett.
EFX2 / EFX7 Black Lavika Nat. Rett.
 Pcs. Box. 1 - Ml. x Box 1,20

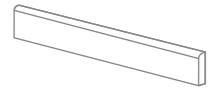
145



GRADINO - STAIR TREAD
 33x120 - 12^{15/16}"x47^{1/4}"
EFWN White Lavika Nat. Rett.
EFWP Sand Lavika Nat. Rett.
EFWQ Taupe Lavika Nat. Rett.
EFWR Grey Lavika Nat. Rett.
EFWS Black Lavika Nat. Rett.
 Pcs. Box. 2 - Ml. x Box 2,40

120

VULCANIKA RAKU



BATTISCOPA - SKIRTING
 7,5x60 - 2^{15/16}"x23^{5/8}"
EFX8 Bianco Raku Rett.
EFX9 Ocra Raku Rett.
EFXA Ruggine Raku Rett.
EFXC Verde Raku Rett.
EFXD Blu Raku Rett.
EFXE Nero Raku Rett.
 Pcs. Box. 15 - Ml. x Box 9

24



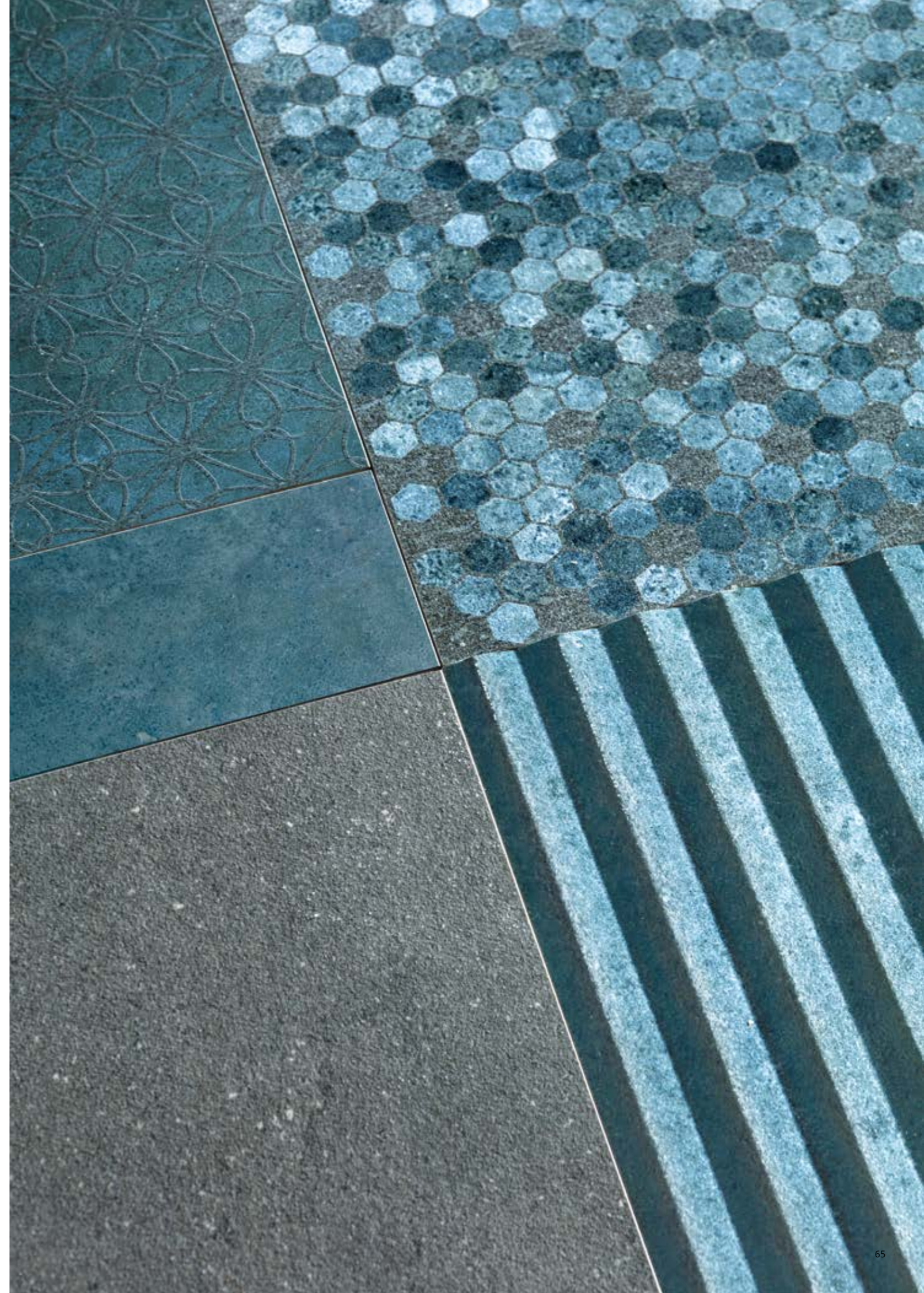
GRADONE - STEP
 33x60x3,2x3,2 - 12^{15/16}"x23^{5/8}"x1^{1/4}"x1^{1/4}"
EFXF Bianco Raku Rett.
EFXG Ocra Raku Rett.
EFXH Ruggine Raku Rett.
EFXJ Verde Raku Rett.
EFXK Blu Raku Rett.
EFXL Nero Raku Rett.
 Pcs. Box. 4 - Ml. x Box 2,40

91



ANGOLARE - CORNER TILE
 33x33x3,2x3,2 - 12^{15/16}"x12^{15/16}"x1^{1/4}"x1^{1/4}"
EFXM Bianco Raku Rett.
EFXN Ocra Raku Rett.
EFXP Ruggine Raku Rett.
EFXQ Verde Raku Rett.
EFXR Blu Raku Rett.
EFXS Nero Raku Rett.
 Pcs. Box. 2 - Ml. x Box 0,66

99



VULCANIKA LAVIKA

Dry - Pressed Ceramic Tiles ISO 13006 Annex G - UNI EN 14411 Annex G - Bla GL



CARATTERISTICHE TECNICHE Technical Features - Caracteristiques Techniques - Technische Eigenschaften Technische Eigenschaften - Características Técnicas - Технические Характеристики	NORMA Standard - Norme Norm - Norma - Норма	VALORI Value - Valeur Vorgabe - Valor - Средние
PLANARITÀ Flatness Planéité Ebenflächigkeit Planaridad Плоскостность	UNI EN ISO 10545/2 ASTM C485 CALIBRATED ± 0,75% (MAX ± 0,09 in) ASTM C485 RECTIFIED ± 0,40% (MAX ± 0,05 IN-SIZE ≤ 60 cm) (MAX ± 0,07 IN-SIZE > 60 cm)	± 0,26% / ± 1,5 mm - ± 0,25%
ASSORBIMENTO D'ACQUA (VALORE MEDIO IN %) Water absorption (Average value expressed in %) - Absorption d'eau (Valeur moyenne en %) Wasseraufnahme (Durchschnittswert in %) - Absorción de agua (Valor medio en %) Поглощение воды	UNI EN ISO 10545/3 ASTM C373	CONFORME COMPLIANT
RESISTENZA ALLA FLESSIONE Modulus of rupture - Resistance a la flexion - Biegefestigkeit Resistencia a la flexion - Прочность на изгиб	UNI EN ISO 10545/4	≥ 50 N/mm ²
FORZA DI ROTTURA Breaking strength - Résistance à la rupture - Bruchlast - Resistencia a la rotura - Разрывное усилие	UNI EN ISO 10545/4 ASTM C648	≥ 2000 N 250 Lbs
RESISTENZA AL GELO Frost resistance - Résistance au gel - Frostbeständigkeit Resistencia a las heladas - Морозостойкость	UNI EN ISO 10545/12 ASTM C1026	CONFORME UNAFFECTED
RESISTENZA CHIMICA AD ALTE E BASSE CONCENTRAZIONI DI ACIDI E BASI Chemical resistance to high and low acid and basic concentrations Résistance chimique aux hautes et basses concentrations d'acides et de bases Chemikalienfestigkeit bei hohen und niedrigen Konzentrationen von Säuren und Basen Resistencia química con concentraciones altas y bajas de ácidos y bases Химическая стойкость к высоким и низким концентрациям кислот и щелочей	UNI EN ISO 10545/13 ASTM C-650	GA - GLA - GHA UNAFFECTED
RESISTENZA ALLE MACCHIE Stain resistance - Résistance aux taches - Fleckenbeständigkeit Resistencia a las manchas - Стойкость к образованию пятен	UNI EN ISO 10545/14 CTI 81-7D	5 NO EVIDENT VARIATION
COEFFICIENTE DI ATTRITO Slip resistance Coefficient de glissement Rutschfestigkeit Barfußbereich Coeficiente de atrito medio Коэффициент трения	DIN 51130 DIN 51097 ANSI A 137.1- 2012 DCOF (Section 9.6) B.C.R.A. AS 4586: 2013 Slip resistance classification of new pedestrian surface materials BS 7976-2: 2002 Pendulum testers ENV 12633-2006 Method of determination of unpolished and polished slip/skid resistance value	R10 B (A+B) WET ≥ 0,42 ≥ 0,40 P3 > 36 Low slip potential 2

Per maggiori chiarimenti sui dati tecnici e sulla garanzia consultare il catalogo generale in vigore. - For further information on technical specifications, please consult our up-dated general catalogue. - Pour toutes informations supplémentaires sur les données techniques et sur les garanties, veuillez consulter le catalogue general en vigueur. - Für weitere Informationen über technische Daten und Garantie beziehen sie sich bitte auf den aktuellen Gesamtkatalog. - Para ulteriores informaciones sobre los datos técnicos y la garantía, vease el catalogo general en vigor. - Более подробную информацию о технических данных и гарантии смотрите в действующем сводном катал.



Formato Size Format Format Tamaño Формат cm	Spessore Thickness Epaisseur Stärke Espesor Толщина mm	Pz. x Mq. Pieces x Sqm Pcs / M ² Stk. x Qm Pzs x Mc. Шт x Кв.М.	Pz. x Scat. Pieces x Box Pcs / Bte Stk. x Krt. Pzs x Caja Шт x Кор.	Mq. x Scat. Sqm x Box M ² / Bte Qm x Krt. Mc. x Caja Кв.М. x Кор.	Peso x Scat. Weight x Box Poids / Bte Gewicht x Krt. Peso x Caja Вес x Кор. Kg	Scat. x Pal. Boxes x Pal. Bte / Pal. Krt. x Pal. Cajas x Pal. Кор. x Подд.	Mq. x Pal. Sqm x Pal. M ² / Pal. Qm x Pal. Mc. x Pal. Кв.М x Подд.	Peso x Pal. Weight x Pal. Poids / Pal. Gewicht x Pal. Peso x Pal. Вес x Подд Kg
60x120 Naturale	10	1,39	2	1,440	33,63	36	51,84	1211
60x60 Naturale	10	2,78	3	1,080	25,00	40	43,20	1000
30x60 Naturale	10	5,56	6	1,080	24,93	40	43,20	997
90x90 Naturale	10	1,23	2	1,620	37,31	24	38,88	895
45x90 Naturale	10	2,47	3	1,215	27,72	32	38,88	887
7,5x30 Naturale	10	44,44	36	0,810	18,80	56	45,36	1053
30x30 Mosaico	10	11,11	5	0,450	10,60	60	27,00	636
30x60 Listelli Sfalsati	10	5,56	4	0,720	17,35	30	21,60	521

PROVENZA



VULCANIKA RAKU

Dry - Pressed Ceramic Tiles ISO 13006 Annex G - UNI EN 14411 Annex G - Bla GL



CARATTERISTICHE TECNICHE Technical Features - Caracteristiques Techniques - Technische Eigenschaften Technische Eigenschaften - Características Técnicas - Технические Характеристики	NORMA Standard - Norme Norm - Norma - Норма	VALORI Value - Valeur Vorgabe - Valor - Средние
PLANARITÀ Flatness Planéité Ebenflächigkeit Planaridad Плоскостность	UNI EN ISO 10545/2 ASTM C485 CALIBRATED ± 0,75% (MAX ± 0,09 in) ASTM C485 RECTIFIED ± 0,40% (MAX ± 0,05 IN-SIZE ≤ 60 cm) (MAX ± 0,07 IN-SIZE > 60 cm)	± 0,26% / ± 1,5 mm - ± 0,25%
ASSORBIMENTO D'ACQUA (VALORE MEDIO IN %) Water absorption (Average value expressed in %) - Absorption d'eau (Valeur moyenne en %) Wasseraufnahme (Durchschnittswert in %) - Absorción de agua (Valor medio en %) Поглощение воды	UNI EN ISO 10545/3 ASTM C373	CONFORME COMPLIANT
RESISTENZA ALLA FLESSIONE Modulus of rupture - Resistance a la flexion - Biegefestigkeit Resistencia a la flexion - Прочность на изгиб	UNI EN ISO 10545/4	≥ 50 N/mm ²
FORZA DI ROTTURA Breaking strength - Résistance à la rupture - Bruchlast - Resistencia a la rotura - Разрывное усилие	UNI EN ISO 10545/4 ASTM C648	≥ 2000 N 250 Lbs
RESISTENZA AL GELO Frost resistance - Résistance au gel - Frostbeständigkeit Resistencia a las heladas - Морозостойкость	UNI EN ISO 10545/12 ASTM C1026	CONFORME UNAFFECTED
RESISTENZA CHIMICA AD ALTE E BASSE CONCENTRAZIONI DI ACIDI E BASI Chemical resistance to high and low acid and basic concentrations Résistance chimique aux hautes et basses concentrations d'acides et de bases Chemikalienfestigkeit bei hohen und niedrigen Konzentrationen von Säuren und Basen Resistencia química con concentraciones altas y bajas de ácidos y bases Химическая стойкость к высоким и низким концентрациям кислот и щелочей	UNI EN ISO 10545/13 ASTM C-650	GA - GLA - GHA UNAFFECTED
RESISTENZA ALLE MACCHIE Stain resistance - Résistance aux taches - Fleckenbeständigkeit Resistencia a las manchas - Стойкость к образованию пятен	UNI EN ISO 10545/14 CTI 81-7D	5 NO EVIDENT VARIATION
COEFFICIENTE DI ATTRITO Slip resistance Coefficient de glissement Rutschfestigkeit Barfußbereich Coeficiente de atrito medio Коэффициент трения	DIN 51130 DIN 51097 ANSI A 137.1- 2012 DCOF (Section 9.6) B.C.R.A. AS 4586: 2013 Slip resistance classification of new pedestrian surface materials BS 7976-2: 2002 Pendulum testers ENV 12633-2006 Method of determination of unpolished and polished slip/skid resistance value	R9 - WET ≥ 0,42 ≥ 0,40 - - -

Per maggiori chiarimenti sui dati tecnici e sulla garanzia consultare il catalogo generale in vigore. - For further information on technical specifications, please consult our up-dated general catalogue. - Pour toutes informations supplémentaires sur les données techniques et sur les garanties, veuillez consulter le catalogue general en vigueur. - Für weitere Informationen über technische Daten und Garantie beziehen sie sich bitte auf den aktuellen Gesamtkatalog. - Para ulteriores informaciones sobre los datos técnicos y la garantía, vease el catalogo general en vigor. - Более подробную информацию о технических данных и гарантии смотрите в действующем сводном катал.



Formato Size Format Format Tamaño Формат cm	Spessore Thickness Epaisseur Stärke Espesor Толщина mm	Pz. x Mq. Pieces x Sqm Pcs / M ² Stk. x Qm Pzs x Mc. Шт x Кв.М.	Pz. x Scat. Pieces x Box Pcs / Bte Stk. x Krt. Pzs x Caja Шт x Кор.	Mq. x Scat. Sqm x Box M ² / Bte Qm x Krt. Mc. x Caja Кв.М. x Кор.	Peso x Scat. Weight x Box Poids / Bte Gewicht x Krt. Peso x Caja Вес x Кор. Kg	Scat. x Pal. Boxes x Pal. Bte / Pal. Krt. x Pal. Cajas x Pal. Кор. x Подд.	Mq. x Pal. Sqm x Pal. M ² / Pal. Qm x Pal. Mc. x Pal. Кв.М x Подд.	Peso x Pal. Weight x Pal. Poids / Pal. Gewicht x Pal. Peso x Pal. Вес x Подд Kg
60x60	10	2,78	3	1,080	24,31	40	43,20	972
30x60	10	5,56	6	1,080	23,69	40	43,20	948
10x60	10	16,67	12	0,720	18,40	60	43,20	1104,00
7,5x30	10	44,44	36	0,810	18,80	56	45,36	1053
30x60 Kaptur	10	5,56	6	1,080	23,42	40	43,20	937
30x30 Karato	10	11,11	12	1,080	24,26	40	43,20	970
30x30 Rikamo	10	11,11	12	1,080	24,25	40	43,20	970
30x30 Mosaico 3x3	10	11,11	5	0,450	10,82	60	27,00	649
19,6x34,2 Link	10	14,92	5	0,335	8,20	60	20,11	492,00
7,5x30 Regoli	10	44,44	20	0,450	10,36	72	32,40	746

PROVENZA



FRENCH / DEUTSCHE / ESPANOL / RUSSIAN

P.2

ÉVOLUTIONS NATURELLES

Une pierre volcanique naturelle et la même pierre émaillée avec effets Raku. Disponibles en plusieurs formats, ces matériaux assortis multiplient à l'infini les combinaisons et les poses. Cinq colorations mates se mélangent à six nuances brillantes pour dégager une immense force d'expression et une grande élégance.

Les tonalités mates de la pierre volcanique et les nuances chatoyantes de la pierre Raku peuvent se conjuguer de mille et une façons, de sorte à mettre en scène une ambiance de contrastes et d'harmonie. Les décors tridimensionnels apportent la richesse de mouvement pour dessiner des cadres surprenants et raffinés.

P.4

CONTEMPORARY Harmonies

Des harmonies de couleurs enveloppent l'habitat contemporain et s'intègrent dans les espaces de tous les jours. Les nuances et les géométries rendent les pièces uniques et confortables. La richesse des formats est parfaite pour tous les environnements.

P.18

High MODERNISM

Des teintes brillantes et mates appliquées à différents formats pour créer des environnements de grand charme. Les couleurs et le potentiel compositionnel de la série rendent possibles des applications élégantes et raffinées. La valeur d'un environnement moderne est d'être toujours actuel

P.32

CLASSIC Comfort

La technique et la couleur sont importantes dans l'art comme dans la vie quotidienne. La tension continue vers la perfection et la beauté est donnée par la couleur juste adaptée à la forme.

P.40

CONTRACT Spaces

Le minimalisme sobre des couleurs, des formats et des surfaces est idéal pour tous les environnements. La fonctionnalité et la fiabilité sont le fruit de l'expérience créatrice. Les nuances délicates et les géométries propres sont conçues pour être évocatrices.

P.2

NATÜRLICHE EVOLUTION

Das Thema der Kollektion bilden natürliches Vulkangestein und Raku-Glasuren. Die beiden Optiken sind in mehreren Formaten erhältlich und erlauben unendlich viele Kombinations- und Verlegemöglichkeiten von großer Eleganz und Ausdrucksstärke. Die Farbpalette umfasst fünf matte Farben und sechs farbenfrohe, glänzende Nuancen. Die matten Töne des Vulkangesteins und die glänzenden Farben der Raku-Glasuren sind in schier unendlichen Varianten und Variationen zu harmonisch-stimmigen oder kontrastreich-belebten Flächenbildern kombinierbar. Die 3D-Dekore lassen mit bewegten Belägen überraschende Gestaltungen und exquisite Raumatmosphären entstehen.

P.4

CONTEMPORARY Harmonies

Harmonische Farbastimmungen zaubern Atmosphäre in moderne Wohnwelten und in die Räume des täglichen Lebens. Die Farbtöne und geometrischen Motive sorgen für ein behagliches Ambiente mit individueller Note. Die breite Formatpalette bietet das Richtige für jeden Raum.

P.18

High MODERNISM

Farben in glänzender und matter Optik, kombiniert mit unterschiedlichen Formaten ermöglichen besonders reizvolle Raumgestaltungen. Die Farben und Kombinationsmöglichkeiten der Serie eröffnen einen breiten Spielraum für elegante, edle Gestaltungen. Die Wertigkeit einer modernen Raumgestaltung zeigt sich in ihrer zeitlos aktuellen Ausstrahlung.

P.32

CLASSIC Comfort

Technik und Farbe spielen in der Kunst wie auch in unserem täglichen Leben eine wichtige Rolle. Das Streben nach Vollendung und Schönheit wird durch die Farbe im Einklang mit der Form verwirklicht.

P.40

CONTRACT Spaces

Der schlichte Minimalismus der Farben, Formate und Oberflächen ist für jede Art von Ambiente perfekt. Funktionalität und Zuverlässigkeit sind das Ergebnis des Know-hows in der Gestaltung. Die zarten Farbtöne und sauberen geometrischen Motive sorgen für stimmige Lösungen.

P.2

EVOLUCIONES NATURALES

Una colección de piedra volcánica natural y la misma piedra esmaltada con efectos Raku. Ideados en varios formatos, estos materiales combinados permiten un sinfín de mezclas y posibilidades de colocación, y transmiten una fuerza expresiva de gran potencia y refinamiento, articulada en cinco colores mates que combinar con seis tonalidades llenas de color y brillo. Los tonos mates de la piedra volcánica y los tornasolados de la Raku se pueden juntar en una inagotable variedad de soluciones, confiriéndole al espacio una atmósfera de contrastes y armonía. Las decoraciones tridimensionales, que comunican un gran dinamismo, son de lo más adecuadas para configurar espacios sorprendentes, de refinados ambientes.

P.4

CONTEMPORARY Harmonies

Armonías de colores envuelven la vivienda contemporánea y se insertan en los ámbitos de uso cotidiano. Las tonalidades y los trazos geométricos hacen que los espacios sean únicos y confortables. La riqueza de los formatos resulta perfecta para cualquier ámbito.

P.18

High MODERNISM

Variantes cromáticas brillantes y mates aplicadas a formatos distintos para crear ámbitos de lo más encantadores. Los colores y las posibilidades compositivas de la serie permiten aplicaciones elegantes y refinadas. El valor de un espacio moderno es que se nos antoje siempre actual.

P.32

CLASSIC Comfort

Técnica y color son tan importantes en el arte como en el vivir cotidiano. La tensión continua hacia la perfección y la belleza viene dada por el color apropiado, adecuado a la forma.

P.40

CONTRACT Spaces

El sobrio minimalismo de colores, formatos y superficies resulta perfecto para toda clase de ámbito. La funcionalidad y la fiabilidad son producto de la experiencia creativa. Las suaves tonalidades y las netas líneas geométricas se han estudiado para resultar evocativas.

P.2

НАТУРАЛЬНАЯ ЭВОЛЮЦИЯ

Коллекция воспроизводит натуральный вулканический камень, а также этот же глазурованный камень с эффектом керамики-раку. Эти материалы, которые доступны в разных форматах, могут совмещаться для получения бесконечных сочетаний и вариантов укладки, создавая мощный и изысканный выразительный потенциал. Палитра включает пять матовых цветов, сочетающихся с шестью цветными и блестящими оттенками. Матовые тона вулканического камня и переливчатые оттенки керамики-раку могут использоваться совместно, предлагая нескончаемый ассортимент решений, создавая в интерьерах атмосферу контрастов и гармонии. Рельефные декоры оживляют поверхности, создавая впечатляющие пространства с изысканной атмосферой.

P.4

СОВРЕМЕННАЯ гармония

В современном жилье царит гармония цветов, которая завоевывает пространства повседневности. Тона и геометрические формы наделяют интерьеры уникальностью и уютом. Богатый ассортимент форматов удачно оформляет любой интерьер.

P.18

Высокий МОДЕРНИЗМ

Глянцевые и матовые тона применены к разным форматам для создания интерьеров с большим очарованием. Цветовая гамма и композиционный потенциал коллекции позволяют получать элегантные и изысканные решения. Ценность современного интерьера заключается в его постоянной актуальности.

P.32

КЛАССИЧЕСКИЙ комфорт

Техника и цвет играют важную роль как в искусстве, так и в повседневной жизни. Постоянное стремление к совершенству и красоте выражается правильным цветом, подходящим к форме.

P.40

КОНТРАКТНЫЕ проекты

Сдержанный минимализм цветов, форматов и поверхностей великолепно вписывается в интерьеры любого типа. Функциональность и надежность являются результатом творческой работы. Нежные тона и чистые геометрические формы созданы для воспоминаний.

PROVENZA

Provenza is a brand of Emilceramica S.r.l. a socio unico	Sede Commerciale/Amministrativa
emilgroup.it/provenza emilgroup.it	Via Ghiarola Nuova, 29 - 41042 Fiorano Modenese (Mo) - Italy T +39 0536 835111 - info@emilceramicagroup.it F (Italy) +39 0536 835958 - (Export) +39 0536 835490